



**Asia-Pacific
Economic Cooperation**

2010/SOM3/CTI/WKSP/013

Cooperation at Land Boundary

Submitted by: Hong Kong, China



**Ease of Doing Business Workshop on Trading
Across Borders
Sendai, Japan
18-19 September 2010**

https://www.flickr.com/photos/jasonhsy/sa30/'."/>

20 Years • 1989-2009
APEC
**Asia-Pacific
Economic Cooperation**

HONG KONG

Cooperation at Land Boundary

Mr. BEN LEUNG

Customs and Excise Department
HONG KONG, CHINA

Source - JasonHuen <https://www.flickr.com/photos/jasonhsy/sa30/>

Hong Kong, China

- Known as the “Pearl of the Orient”**
- Located at the Southeast of China**
- Land Area : 1,100 square kilometres**
- Population : 7 million**
- A small but dynamic city as one of the leading commercial and financial centres**

2

Hong Kong, China



Source: David Iltiff <http://creativecommons.org/licenses/by-sa/4.0/deed.en>

- ❑ Hong Kong Special Administrative Region established on 1 July 1997
- ❑ Under the “one country, two systems” principle, Hong Kong’s previous system and lifestyle continue to be practised
- ❑ Hong Kong enjoys a high degree of autonomy except in defence and foreign affairs

3

Hong Kong Customs



- ❑ Established in 1909 and 2009 is the 100th Anniversary of the department
- ❑ An individual member of the WCO as Hong Kong, China with independent Customs system under the “One Country, Two Systems” principle



Vehicular Control Points



Bird-view Of Control Points



Hong Kong, China

- Free Port
- No Customs Tariff
- Minimal Licensing Requirements



7

% of Total Hong Kong Merchandise Trade Contributed By Mainland China

Import (From)	47%
Export (To)	38%
Re-export (To)	49%
Re-export (From)	63%

8

Challenges/ Opportunities

The Situation

- Increased Trade Volume
- High Volume of Cargoes and Vehicles



The Need

- Provide Quality Service
- Balance Law Enforcement and Trade Facilitation

9

Hong Kong Approach

- Facilitation and Control
- Technology / Advanced Equipment
- Control Point Infrastructure / Co-location Arrangement



10

to be continued ...

Hong Kong Approach

- ❑ Cooperation with the Mainland
- ❑ Cooperation with the Trade
- ❑ Adopt International Best Practice
- ❑ New Road Cargo System



11

Facilitation and Control

- ❑ Use Intelligence Based Risk Management Techniques
- ❑ Streamline Clearance Procedures at Customs Kiosks
- ❑ Land Cargo Advance Clearance

12

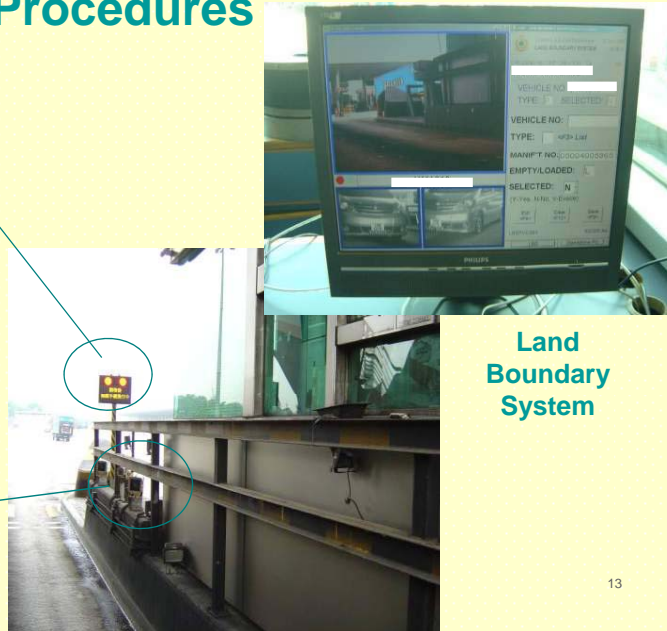
Streamline Clearance Procedures



LED Display



Digital Camera



Land Boundary System

13

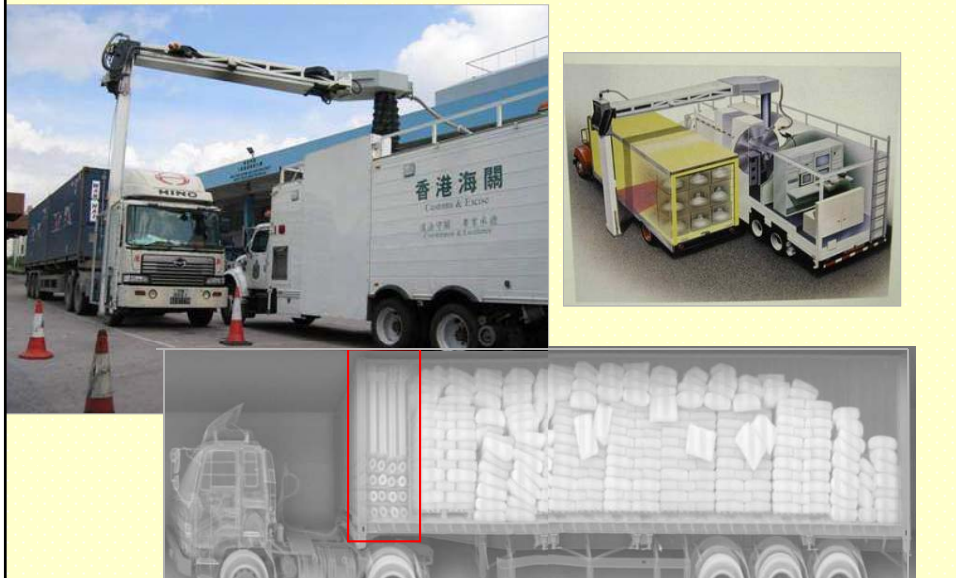
Technology / Advanced Equipment

- Land Boundary System
- Automatic Vehicle Recognition System
- LED-display Board
- Mobile X-ray / Vehicle X-ray Inspection System



14

Mobile X-ray Vehicle Scanning System



Vehicle X-ray Inspection System at Lok Ma Chau Control Point



Control Point Infrastructure / Co-location Arrangement

- ❑ Control Point Improvement
- ❑ Co-location Arrangement at Shenzhen Bay Port



Lok Ma Chau /
Huanggang Bridge



Co-location at
Shenzhen Bay Port

Cooperation with Mainland

《合作框架协议》签
Agreement on Hong Kong/Guangdong Cooperation

北京 2010年4月7日
Beijing 7 April 2010



- ❑ Framework Agreement on Hong Kong/Guangdong Co-operation
- ❑ Green Customs Seal
- ❑ Unified Road Cargo Manifest

18

Framework Agreement

- ❑ Signed in Beijing on 7 April 2010 between HK/ GD government
- ❑ Developed under “Outline of the Plan for the Reform and Development of the Pearl River Delta” promulgated by The National Development and Reform Commission in January 2009
- ❑ Study and innovate clearance mode for control points to facilitate people, vehicle and cargo flow
- ❑ Promote cross reference of Customs inspection result
- ❑ Unify Customs information format

19

Green Customs Seal



20

Unified Road Cargo Manifest

內地海關及香港海關陸路進/出境載貨清單

內地海關條碼: XXXXXXXXXX

車牌號碼: (內地車牌: _____ 香港車牌: _____) 內地 載貨清單編號: _____
 香港 載貨清單編號: _____

出/進*境日期: _____ 裝貨地點: _____ 卸貨地點: _____ 此聯載貨清單共有 _____ 頁

項目	貨物名稱及規格	標記及編號	包裝方式 及數量	重量* 淨重* (公斤)	價格 (港幣/人民幣)*	件貨人名稱及地址 (蓋章)	收買人名稱及地址 (蓋章)

總件數: _____ 總重量/總體積*: _____ 貨櫃箱編號: _____ (如果是冷藏櫃, 要注明)

運輸公司聲明: 茲證明, 上列貨物由 _____ 公司委託承運, 保證無訛。
 運輸公司名稱: _____
 運輸公司地址: _____ 運輸公司 (蓋章): (只在第一、二聯出現)
 運輸公司電話: _____ 司機簽名及姓名: _____ 日期: _____

內地適用		香港適用	
合同(協議)號	海關關鎖號 (條形碼) NO	轉運貨物	是/否*
監管方式	(進境地/啓運地) 海關批注、簽章: (指運地/出境地) 海關批注、簽章:	進/出口*	
起運地(地區) 最終目的地(地區)		許可證編號:	
進(出)境地/ 指(啓)運地*		轉運或空運 托運單編號:	
車輛海關編號	關員簽名: 日期:	香港貨櫃車 拖頭號碼:	

* 請刪去不適用者

第三聯 港交香港海關

Cooperation with Trade



- Cross Boundary Transport Industry Customer Liaison Group
- Watch Out Programme

Adopt International Best Practice

- ❑ Membership in APEC / WCO
- ❑ Reference to their Standard / Framework
- ❑ Alignment with Mainland



23

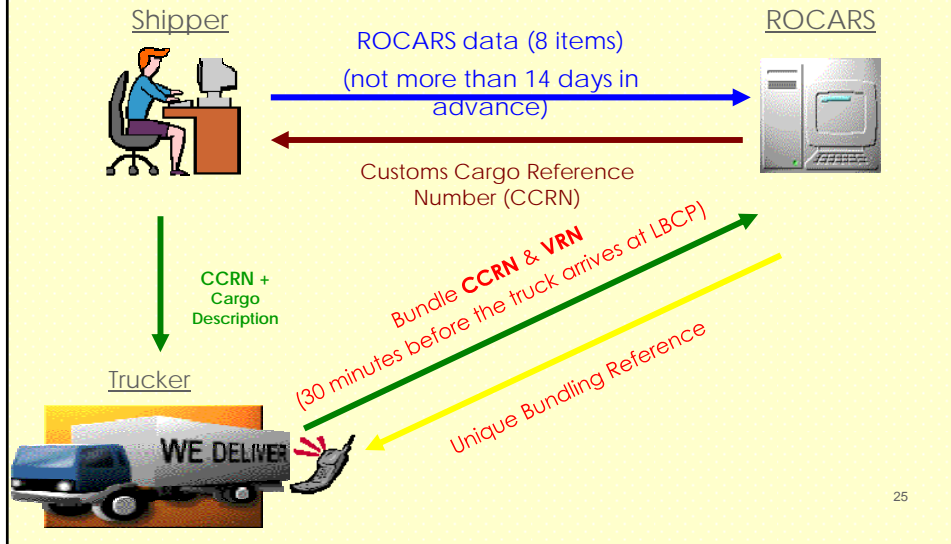
New Road Cargo System



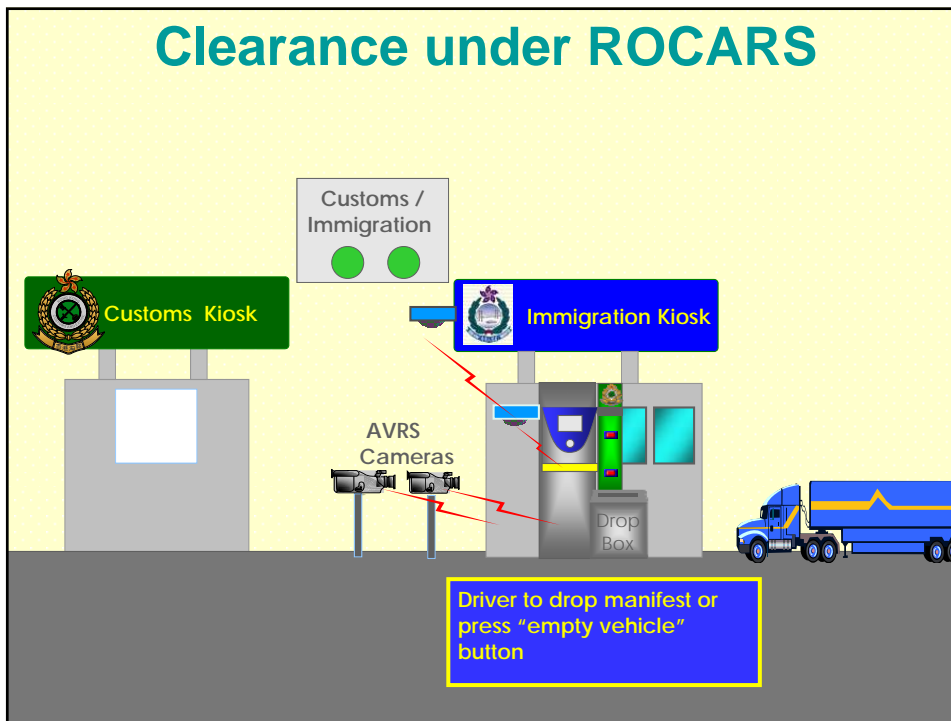
- ❑ Road Cargo System (ROCARS)
 - ❑ Advance Electronic Submission of Cargo Information
 - ❑ Cargo Selectivity Centre
- ❑ Launch in May 2010

24

ROCARS Information Flow



Clearance under ROCARS



Way Forward

- ❑ **Mandatory Use of ROCARS**
- ❑ **Seamless Trade by Synergy with other technology (electronic data transmission, RFID, e-seal, GPS ...etc)**
- ❑ **Alignment with WCO Data Model**



27

Thank You

28