



**Asia-Pacific  
Economic Cooperation**

---

**2017/SOM3/SCSC/JRAC/009**

Agenda Item: 6a

**Mutual Recognition Arrangement on Conformity  
Assessment of Electrical and Electronic Equipment -  
APEC EEMRA Information Interchange Format Part  
1 – Chinese Taipei**

Purpose: Information  
Submitted by: Chinese Taipei



**22<sup>nd</sup> Joint Regulatory Advisory Committee on  
Electrical and Electronic Equipment Meeting  
Ho Chi Minh City, Viet Nam  
20 August 2017**

**MUTUAL RECOGNITION ARRANGEMENT ON CONFORMITY  
ASSESSMENT OF ELECTRICAL AND ELECTRONIC EQUIPMENT**

**APEC EEMRA  
Information Interchange Format**

**PART 1**

## Introduction

This format is being prepared to assist member economies participating in the APEC MRA to prepare documentation required for participation in a consistent format.

It is expected that each participating member economy would submit their information in the recommended format to the APEC Secretariat as required by the MRA.

The format is based on the Information Notes on Good Practice for Technical Regulation and therefore provides for information to be supplied for each of the regulatory regimes identified in the notes. There are 7 regimes, they are for products requiring inspection, products requiring licensing, products requiring batch testing, products requiring approval (or certification), products requiring listing or registration, supplier declarations and essential safety requirements. Participating member economies need only provide information relating to the regimes which are in force in their economy. The regimes that are not enforced by the economy need to be noted also, please indicate this by placing 'none' in the standards table on the front of each regime.

Where more than one regulatory system applies within a participating member economy information on each regulatory system should be provided separately.

The format also draws upon the survey on Conformity Assessment of Electrical and Electronic Equipment conducted by the APEC SCSC. The format includes reference to applicable international standards and uses the international convention for describing the relationship of national and international standards, i.e. IDT for identical, MOD for modified, and NEQ for not equal.

When information makes reference to documents or legislation, the documents or legislation should be available on a website for that economy or provided as part of the information supplied to the APEC Secretariat.

## ECONOMY – Chinese Taipei

### APEC EEMRA Information Interchange Format

#### Contact Points:

**Mr. Chue-Wen Wu**

Director of the 5th Division

Bureau of Standards, Metrology & Inspection

4 Chinan Road, Section 1, Taipei 100, Chinese Taipei

E-mail: [chuewen.wu@bsmi.gov.tw](mailto:chuewen.wu@bsmi.gov.tw)

Tel: (886 2) 2343 1787

Fax: (886 2) 2343 1804

**Mr. June-Chieh Lai**

Director of the 3rd Division

Bureau of Standards, Metrology & Inspection

4 Chinan Road, Section 1, Taipei 100, Chinese Taipei

E-mail: [JJ.Lai@bsmi.gov.tw](mailto:JJ.Lai@bsmi.gov.tw)

Tel: (886 2) 2343 1776

Fax: (886 2) 3343 3991

## **PART I – INFORMATION EXCHANGE**

### **Regime Overview**

In Chinese Taipei, the basic and comprehensive law governing the inspection and certification is the Commodity Inspection Act. This law covers inspection of products to be imported or exported or domestically manufactured, general inspection procedures and penalty for violation.

The Bureau of Standards, Metrology and Inspection, Ministry of Economic Affairs has designated a list of commodities subject to mandatory inspection to ensure the conformity with technical standards prior to the importation and sale on the local market.

The inspection of Electrical and Electronic commodities is conducted based on four conformity assessment schemes, namely Batch-by-Batch Inspection (BBI), Type-Approved Batch Inspection (TABI), Registration of Product Certification (RPC), and Declaration of Conformity (DoC).

Among EE products, both TABI and RPC schemes are applicable to 103 items of electrical products and 56 items of electronic products, at the choice of manufacturers or importers. RPC scheme is applicable to 105 items and 69 items of electrical products and electronic products, respectively. DoC is applicable to 38 items of information technology (IT) products. BBI scheme is applicable to 5 items of video game products. Regulations for commodity inspection and market surveillance are prescribed in the Commodity Inspection Act as well as other regulations and directions.

The inspection standards (CNS standards) of EE and IT products are harmonized with IEC (safety) and CISPR (EMC) international standards. In addition, energy efficiency testing is necessary for some products, such as refrigerators, air conditioners, dehumidifiers and electric pots. The minimum energy efficiency of these products must meet the requirements of the Bureau of Energy, Ministry of Economic Affairs.

Product labelling is mandatory. Imported products must have labels and instructions in Chinese, which may not be simpler than the version in the original language.

**Legislative References**

Legislation Applicable	Scope of the Legislation	Government Agency
Commodity Inspection Act 2007	Electrical Safety	Bureau of Standards, Metrology, and Inspection
	Electromagnetic Compatibility	

**1. PRODUCTS REQUIRING INSPECTION**

None

**2. PRODUCTS REQUIRING LICENSING**

None

**3. PRODUCTS REQUIRING BATCH TESTING**

**Description of the Regime**

Batch-by-batch inspection (BBI) applies to products with unstable manufacturing technology or those that pose concerns of risk or danger. In order for domestically manufactured or imported products to be placed on the market, manufacturers or importers must apply to the BSMI for inspection of the products before they are shipped or imported.

As for Type-approved Batch Inspection (TABI) scheme, manufacturers or importers shall have their products type-tested by the BSMI or BSMI-recognized testing laboratories, and then file an application for type approval with the BSMI or its branches.

After manufacturers or importers have obtained a type-approval certificate, they are still required to file an application for batch inspection with the BSMI each time before their products arrive at the port of entry. The BSMI will then perform inspection with simplified procedures. Additional samples may be required for further testing if it is deemed necessary. The application fee for a type approval is NT\$3,500, and a type approval certificate is generally valid for three years.

The fees for type testing vary by products and depend on the fee schedule of the testing laboratories.

At present, TABI scheme is one of the alternative conformity assessment schemes for products subject to Registration of Product Certification (RPC) scheme. Products covered by TABI are the same as those listed under “4. PRODUCTS REQUIRING APPROVAL (OR CERTIFICATION)”, except 6 items of video game products are limited to BBI scheme.

### **Testing Facilities**

The Bureau of Standards, Metrology and Inspection, Ministry of Economic Affairs

### **Approval (Certification) Agencies**

The Bureau of Standards, Metrology and Inspection, Ministry of Economic Affairs

### **Batch Testing Agencies**

The Bureau of Standards, Metrology, and Inspection, Ministry of Economic Affairs

### **Labeling Requirements**

The Commodity Inspection Mark printed and issued by the BSMI shall be affixed to the products subject to BBI scheme after they pass the inspection.

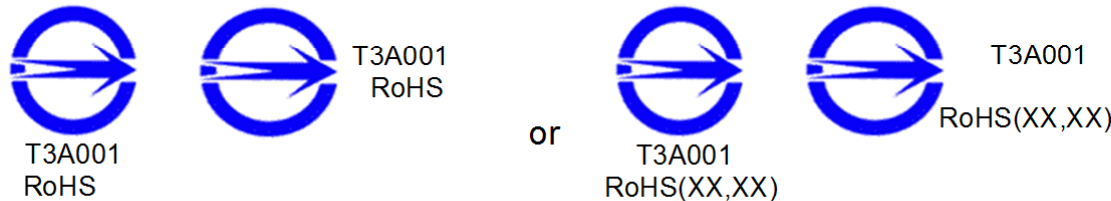
Example:



As for TABI scheme, the Commodity Inspection Mark with the Roman letter 'T' followed by a 5-digits designated code given by the BSMI are allowed to use after the products have passed the inspection requirements.

As for those commodities subject to marking requirements stipulated in CNS 15663, Section 5 “Marking of presence” under the DoC Scheme, the identification number of which shall be included “the presence conditions of the restricted substance” (i.e., RoHS or RoHS(XX,XX)).

Examples of the Commodity Inspection Mark for DoC Scheme are shown as follows:



“RoHS” of the identification number: indicating that “the content of restricted substance(s) other than exemption” of the commodities does not exceed the reference percentage value of presence condition.

“RoHS(XX,XX)” of the identification number: indicating that “the content of restricted substance(s) (element XX, element XX, ...) other than exemption” of the commodities exceeds the reference percentage value of presence condition.

The restricted substances: indicating Pb, Cd, Hg, Cr+6, PBB, PBDE.



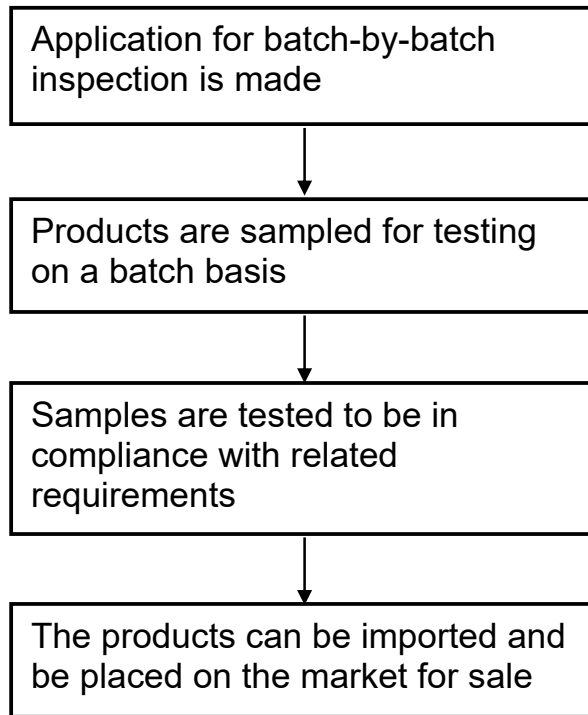
Examples:

- RoHS(Pb): indicating that the Pb percentage content in certain parts of the commodity exceeds the reference percentage value of presence condition.
- RoHS(Cd,Cr+6,PBB): indicating that the Cd, Cr+6, and PBB percentage content in certain parts of the commodity exceed the reference percentage value of presence condition respectively.

### **Regulatory and Legislation Requirements**

Commodity Inspection Act 2007

**Diagrammatic representation or flowchart of the regime**



#### **4. PRODUCTS REQUIRING APPROVAL (OR CERTIFICATION)**

##### **Description of the Regime**

Under Registration of Product Certification (RPC) scheme, manufacturers/importers must have their products type-tested in advance (Module II) by the BSMI, recognized designated testing laboratories (local or overseas) or testing laboratories recognised under MRA before applying for registration of their products. Manufacturers or importers will also be required to ensure by declaration (Module III) that all products whether made at their manufacturing facilities or imported are in conformity with the prototypes submitted for type test at Module II stage.

In addition, the quality management systems of the production premises must be in conformity with Module IV (full quality assurance), Module V (production quality assurance) or Module VII (factory inspection). For Module IV and Module V, they are required to get certification in accordance with the CNS 12680 (ISO 9000) series of standards. As for Module VII, it is required to obtain a factory inspection report issued by the BSMI or BSMI-recognized factory inspection bodies. A declaration of conformity is also required to ensure that the quality of the mass-produced commodities is in conformity with that shown in the type-test report.

Products will be allowed to use the Commodity Inspection Mark with the letter 'R' and the identification number given by the BSMI, after they are certified and registered with the BSMI. These products can then pass through customs directly without any further inspection if not be sampled by RPC border check procedure. The application fee and annual fee for RPC are both NTD \$5,000(about USD \$170) for each certification, and the RPC certifications are valid for three years. If there are any serial products, the extra NTD \$3,000(about USD \$102) of application fee is needed for every application in each certification.

The fees for type testing vary by products and depend on the fee schedule of the testing laboratories.

Currently, there are 105 items of electrical products and 69 items of electronics products subject to RPC scheme. In addition, except 2 items of electrical products (e.g., Single-phase AC motors, Low voltage three-phase induction motors) and 13 items of electronics products (e.g., secondary lithium batteries, mobile

power banks, battery chargers, etc.) are only subject to RPC scheme, 103 items of electrical products and 56 items of electronics products could alternatively apply to TABI scheme.

### **Testing Facilities**

Testing laboratories that meet relevant requirements may apply to the BSMI for recognition and they will be called the "designated testing laboratories" after recognition is granted. The BSMI recognizes testing laboratories according to the "Regulations Governing Recognition of Designated Testing Laboratory for Commodity Inspection." The BSMI accepts applications from domestic and foreign testing laboratories for recognition in the electromagnetic compatibility (EMC) testing and safety testing field.

Currently, there are 47 designated EMC labs and 71 designated safety labs in Chinese Taipei. In addition, there are 106 recognized overseas EMC testing laboratories in total, including 86 EMC labs in the US and Canada, 1 EMC lab in the United Kingdom, 1 EMC lab in Germany, 2 EMC labs in Singapore, 15 EMC labs in Japan and 1 EMC lab in Australia. As for safety testing, there are total 3 recognized overseas safety testing labs, 1 lab in Singapore and 2 labs in Japan.

### **Certification bodies**

Domestic certification bodies applying for recognition by the BSMI shall demonstrate in compliance with the BSMI requirements and be accredited by the Taiwan Accreditation Foundation (TAF). The applicant applying for recognition shall be administrative agencies, colleges/universities, or non-profit juristic persons. The BSMI recognizes certification bodies according to the "Regulations Governing Commission of Commodity Inspection Operations".

Currently, there are 3 recognized certification bodies in Chinese Taipei for certain EE products, such as audio and video products, air conditioners, electrical tools and fluorescent lamps.

### **Designating Authority**

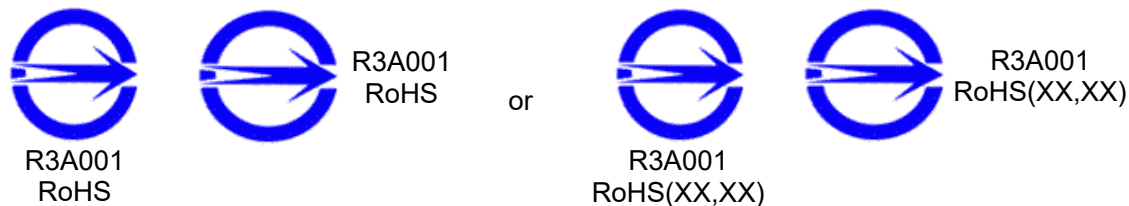
The Bureau of Standards, Metrology, and Inspection, the Ministry of Economic Affairs

### **Labelling Requirements**

The Commodity Inspection Mark with the Roman letter 'R' followed by a 5-digits designated code given by the BSMI are allowed to use after the products have passed the inspection requirements.

As for those commodities subject to marking requirements stipulated in CNS 15663, Section 5 “Marking of presence” under the RPC Scheme, the identification number of which shall be included “the presence conditions of the restricted substance” (i.e., RoHS or RoHS(XX,XX)).

Examples of the Commodity Inspection Mark for RPC Scheme are shown as follows:



“RoHS” of the identification number: indicating that “the content of restricted substance(s) other than exemption” of the commodities does not exceed the reference percentage value of presence condition.

“RoHS(XX,XX)” of the identification number: indicating that “the content of restricted substance(s) (element XX, element XX, ...) other than exemption” of the commodities exceeds the reference percentage value of presence condition.

The restricted substances: indicating Pb, Cd, Hg, Cr+6, PBB, PBDE.

Examples:

- RoHS(Pb): indicating that the Pb percentage content in certain parts of the commodity exceeds the reference percentage value of presence condition.
- RoHS(Cd,Cr+6,PBB): indicating that the Cd, Cr+6, and PBB percentage content in certain parts of the commodity exceed the reference percentage value of presence condition respectively.

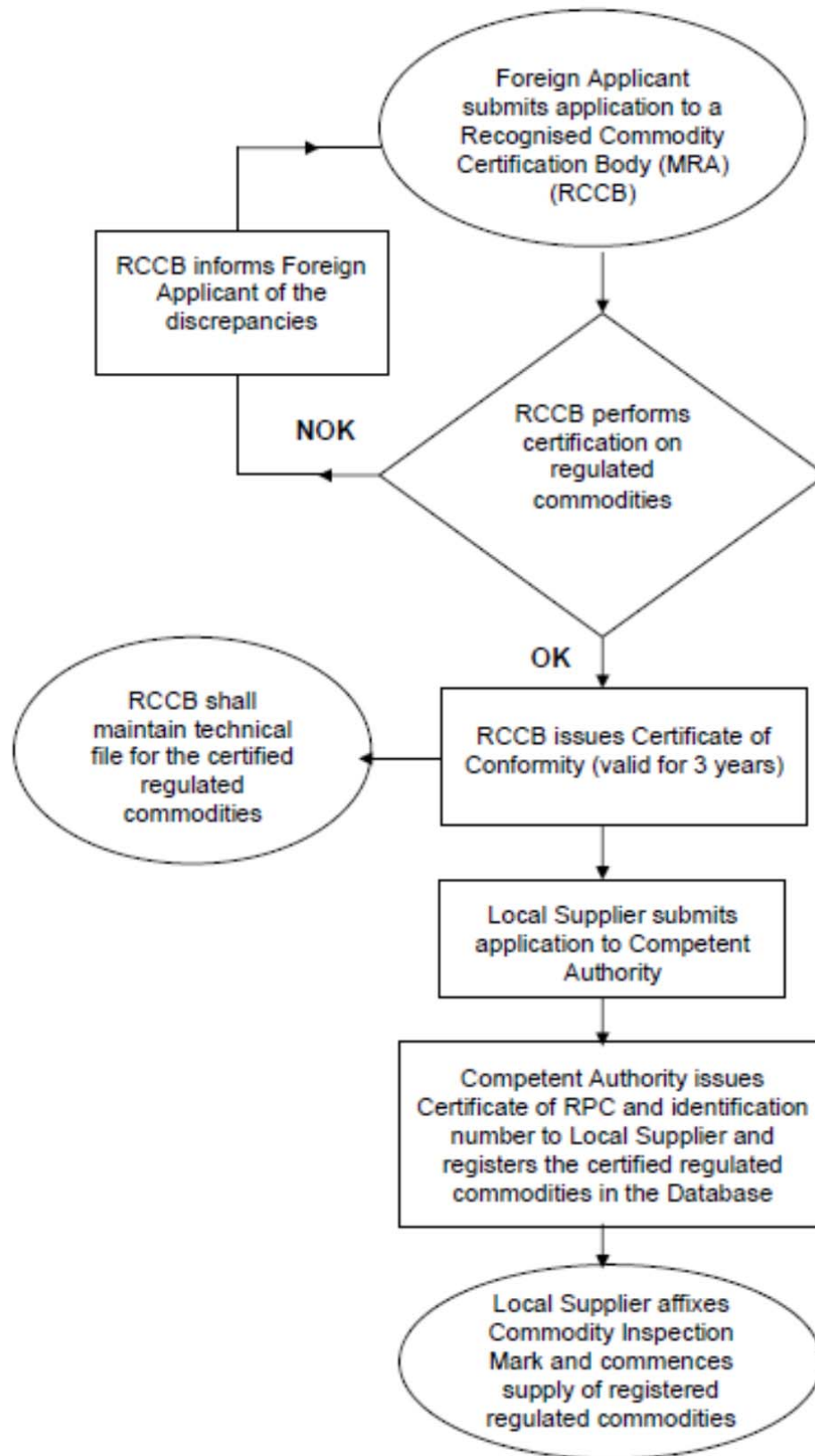
### **Regulatory and Legislation Requirements**

Commodity Inspection Act 2007.

Regulations Governing Commission of Commodity Inspection Operations 2013.

Regulations Governing Recognition of Designated Testing Laboratory for Commodity Inspection 2008.

**Diagrammatic representation or flowchart of the regime**



## **5. PRODUCTS REQUIRING LISTING OR REGISTRATION**

None

## **6. SUPPLIER DECLARATIONS**

### **Description of the Regime**

Commodities subject to the Declaration of Conformity (DoC) scheme are required to be tested by the BSMI, recognized designated testing laboratories (local or overseas) or testing laboratories recognised under MRA. Once the commodities are tested and shown to be in compliance with inspection standards, manufacturers/importers shall sign a Declaration of Conformity and maintain test reports or relevant technical documents of the commodities.

Manufacturers/importers shall apply to be registered to acquire the identification number. Upon BSMI receipts of the application, the identification number with the Roman letter 'D' followed by a 5-digits designated code will be given to the applicants. Accordingly, the manufacturers/importers can then affix the Commodity Inspection Mark with the identification numbers on the regulated commodities and place the commodities on the market.

Currently, there are 38 electronics/IT products (classified by C.C.C. Code) subject to the DoC scheme.

### **Testing Facilities**

The same as the testing facilities listed under item 4.

### **Labelling Requirements**

The Commodity Inspection Mark with the Roman letter 'D' followed by a 5-digits designated code given by the BSMI are allowed to use after the conformity assessment procedures have been completed.



As for those commodities subject to marking requirements stipulated in CNS 15663, Section 5 “Marking of presence” under the DoC Scheme, the identification number of which shall be included “the presence conditions of the restricted substance” (i.e., RoHS or RoHS(XX,XX)).

Examples of the Commodity Inspection Mark for DoC Scheme are shown as follows:



“RoHS” of the identification number: indicating that “the content of restricted substance(s) other than exemption” of the commodities does not exceed the reference percentage value of presence condition.

“RoHS(XX,XX)” of the identification number: indicating that “the content of restricted substance(s) (element XX, element XX, ...) other than exemption” of the commodities exceeds the reference percentage value of presence condition.

The restricted substances: indicating Pb, Cd, Hg, Cr+6, PBB, PBDE.

Examples:

- RoHS(Pb): indicating that the Pb percentage content in certain parts of the commodity exceeds the reference percentage value of presence condition.
- RoHS(Cd,Cr+6,PBB): indicating that the Cd, Cr+6, and PBB percentage content in certain parts of the commodity exceed the reference percentage value of presence condition respectively.

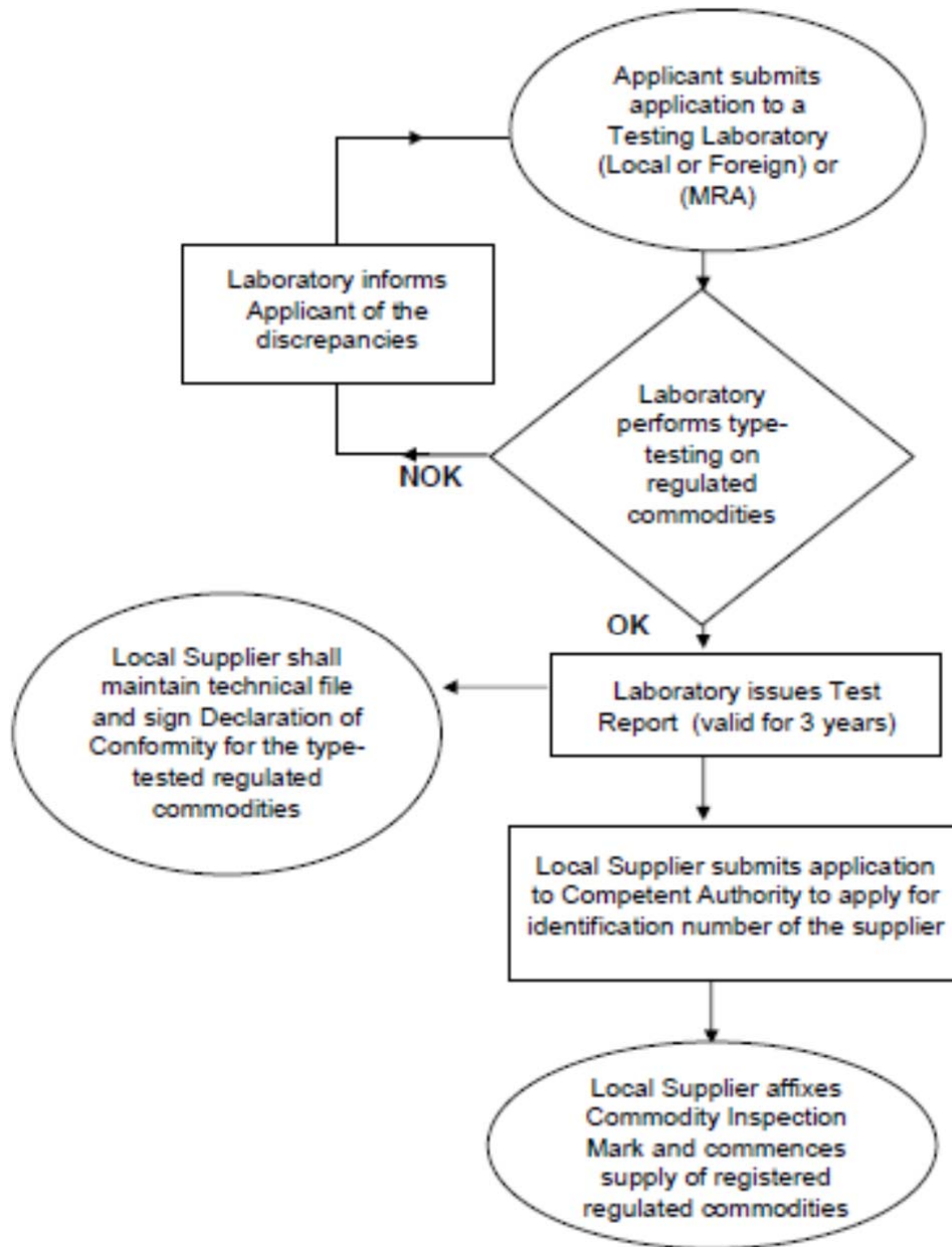
## **Regulatory and Legislation Requirements**

Commodity Inspection Act 2007

Regulations Governing Commission of Commodity Inspection Operations 2013.

Regulations Governing Recognition of Designated Testing Laboratory for Commodity Inspection 2008.

**Diagrammatic representation or flowchart of the regime**



## **7. ESSENTIAL SAFETY REQUIREMENTS**

None

## **8. SUMMARY OF UPDATE**

### **(1) Contact Points**

Updates are highlighted on Page 3.

### **(2) Regime Overview**

The total number of regulated EE products is updated, as highlighted on Page 4.

### **(3) PRODUCTS REQUIRING APPROVAL (OR CERTIFICATION)**

#### **● Description of the Regime**

The total number of regulated EE products is updated, as highlighted on Page 9-10.

#### **● Testing Facilities**

The total number of recognized EMC and safety labs in Chinese Taipei and overseas is updated, as highlighted on Page 11.

### **(4) Products covered by the above inspection schemes**

C.C.C. Codes of regulated products are removed.

Marking of the presence conditions of the restricted substance are added to EE products which are subject to RPC/TABI and DoC scheme. Also, inspection standards are updated for most of electrical products.

**Products covered by the above inspection schemes**

**1. Products covered by batch testing (BBI scheme)**

Product	Regulations	Standards			
		Domestic Standards	Please tick box if mandatory	Relevant International Standards	Extent of Alignment
Other games, operated by coins, banknotes ,bank card, ,token or other type of payment, other than automatic bowling alley equipment	Commodity Inspection Act	CNS 14465	√	Nil	NEQ
Other video games of a kind used with a television receiver, without software	ditto	CNS 12473	√	Nil	NEQ
Other video games of a kind used with a television receiver	ditto	CNS 12473 CNS 14465	√	Nil Nil	NEQ NEQ
Other video game consoles and machines,other than those of subheading 950430	ditto	CNS 12473 CNS 14465	√	Nil Nil	NEQ NEQ
Other articles for funfair, table or parlour games (inspection scope: other than motor vehicles designed to be ridden by children, toy, pedal or machine operated)	ditto	CNS 14465	√	Nil	NEQ

## 2. Products covered by approval or certification (RPC/TABI Scheme)

### 2.1. Electrical products

Product	Regulations	Standards			
		Domestic Standards	Please tick box if mandatory	Relevant International Standards	Extent of Alignment
<b>Electric Blankets</b> (inspection scope: Rated voltage not exceeding single-phase 250V AC, including those with/charged with a AC to DC adapter, exclusive of those for animal use or medical devices specified by the Pharmaceutical Affairs Act)	Commodity Inspection Act	CNS 60335-1 (2014)	√	IEC 60335-1 (2013)	MOD
		CNS 60335-2-81 (2015) or CNS 60335-2-17 (2015) or CNS 60335-2-23 (2015)		IEC 60335-2-81 (2012) IEC 60335-2-17 (2012) IEC 60335-2-23 (2012)	MOD
		CNS 13783-1 (2013)		CISPR 14-1 (2011)	MOD
		CNS 15663 (2013) Section 5 "Marking of Presence"		Nil	NEQ
<b>Electro-thermic warmers for personal use</b> (inspection scope: Rated voltage not exceeding single-phase 250V AC including those with/charged with a AC to DC adapter, exclusive of those medical devices specified by the Pharmaceutical Affairs Act)	ditto	CNS 60335-1 (2014)	√	IEC 60335-1 (2013)	MOD
		CNS 60335-2-81 (2015) or CNS 60335-2-17 (2015) or CNS 60335-2-23 (2015)		IEC 60335-2-81 (2012) IEC 60335-2-17 (2012) IEC 60335-2-23 (2012)	MOD
		CNS 13783-1 (2013)		CISPR 14-1 (2011)	MOD
		CNS 15663 (2013) Section 5 "Marking of Presence"		Nil	NEQ
<b>Electric mattresses</b>	ditto	CNS 60335-1 (2014)	√	IEC 60335-1 (2013)	MOD

Product	Regulations	Standards			
		Domestic Standards	Please tick box if mandatory	Relevant International Standards	Extent of Alignment
(inspection scope: Rated voltage not exceeding single-phase 250V AC, including those with/charged with a AC to DC adapter, exclusive of those for animal use or medical devices specified by the Pharmaceutical Affairs Act)		CNS 60335-2-81 (2015) or CNS 60335-2-17 (2015) or CNS 60335-2-23 (2015)		IEC 60335-2-81 (2012) IEC 60335-2-17 (2012) IEC 60335-2-23 (2012)	MOD
		CNS 13783-1 (2013)		CISPR 14-1 (2011)	MOD
		CNS 15663 (2013) Section 5 "Marking of Presence"		Nil	NEQ
<b>Fans</b> (inspection scope: Rated voltage not exceeding single-phase 250V AC and rated power consumption not exceeding 500W(if without the electro-thermal devices), including those interconnectable multiple-fan system using with a controller or with/charged with a AC to DC adapter, exclusive of those incorporated in other appliances)	ditto	CNS 60335-1 (2014)	√	IEC 60335-1 (2013)	MOD
		CNS 60335-2-80 (2015)		IEC 60335-2-80 (2008)	MOD
		CNS 13783-1 (2013)		CISPR 14-1 (2011)	MOD
		CNS 15663 (2013) Section 5 "Marking of Presence"		Nil	NEQ
<b>Hand dryers</b> (inspection scope: Rated voltage not exceeding single-phase 250V AC including those	ditto	CNS 60335-1 (2014)	√	IEC 60335-1 (2013)	MOD
		CNS 60335-2-23 (2015)		IEC 60335-2-23 (2012)	MOD
		CNS 13783-1 (2013)		CISPR 14-1 (2011)	MOD

Product	Regulations	Standards			
		Domestic Standards	Please tick box if mandatory	Relevant International Standards	Extent of Alignment
with/charged with a AC to DC adapter)		CNS 15663 (2013) Section 5 "Marking of Presence"		Nil	NEQ
<b>Ventilators/ Exhaust hoods</b> (inspection scope: Rated voltage not exceeding single-phase 250V AC, including those with/charged with a AC to DC adapter)	ditto	CNS 60335-1 (2014)	√	IEC 60335-1 (2013)	MOD
		CNS 60335-2-31 (2015)		IEC 60335-2-31 (2012)	MOD
		CNS 13783-1 (2013)		CISPR 14-1 (2011)	MOD
		CNS 15663 (2013) Section 5 "Marking of Presence"		Nil	NEQ
<b>Electric refrigerators and freezers</b> (inspection scope: Rated voltage not exceeding single-phase 250V AC and rated storage volume 700L, including those with/charged with a AC to DC adapter)	ditto	CNS 60335-1 (2014)	√	IEC 60335-1 (2013)	MOD
		CNS 60335-2-24 (2016)		IEC 60335-2-24 (2012)	MOD
		CNS 2062 (2000) Section 5.2, 5.3, 5.10 and 7		Nil	NEQ
		CNS 13783-1 (2013)		CISPR 14-1 (2011)	MOD
		CNS 15663 (2013) Section 5 "Marking of Presence"		Nil	NEQ
<b>Electric absorption-type refrigerators</b> (inspection scope: Rated voltage not exceeding single-phase 250V AC and rated storage volume	ditto	CNS 60335-1 (2014)	√	IEC 60335-1 (2013)	MOD
		CNS 60335-2-24 (2016)		IEC 60335-2-24 (2012)	MOD
		CNS 13783-1 (2013)		CISPR 14-1 (2011)	MOD



Product	Regulations	Standards			
		Domestic Standards	Please tick box if mandatory	Relevant International Standards	Extent of Alignment
not exceeding 700L, including those with/charged with a AC to DC adapter)		CNS 15663 (2013) Section 5 "Marking of Presence"		Nil	NEQ
<b>Upright freezers</b> (inspection scope: Rated voltage not exceeding single-phase 250V AC and rated storage volume not exceeding 400L, including those with/charged with a AC to DC adapter)	ditto	CNS 60335-1 (2014)	√	IEC 60335-1 (2013)	MOD
		CNS 60335-2-24 (2016)		IEC 60335-2-24 (2012)	MOD
		CNS 2062 (2000) Section 5.2, 5.3, 5.10 and 7		Nil	NEQ
		CNS 13783-1 (2013)		CISPR 14-1 (2011)	MOD
		CNS 15663 (2013) Section 5 "Marking of Presence"		Nil	NEQ
<b>Refrigerating cooler box</b> (inspection scope: Rated voltage not exceeding single-phase 250V AC and rated storage volume not exceeding 100L, including those with/charged with a AC to DC adapter)	ditto	CNS 60335-1 (2014)	√	IEC 60335-1 (2013)	MOD
		CNS 60335-2-24 (2016)		IEC 60335-2-24 (2012)	MOD
		CNS 13783-1 (2013)		CISPR 14-1 (2011)	MOD
		CNS 15663 (2013) Section 5 "Marking of Presence"		Nil	NEQ
<b>Electric coffee machines/makers</b> (inspection scope: Rated voltage not exceeding single-phase 250V AC and rated power consumption not	ditto	CNS 60335-1 (2014)	√	IEC 60335-1 (2013)	MOD
		CNS 60335-2-15 (2014) or CNS 60335-2-14 (2015) (if equipped with grinding function)		IEC 60335-2-15 (2012) IEC 60335-2-14 (2012)	MOD

Product	Regulations	Standards			
		Domestic Standards	Please tick box if mandatory	Relevant International Standards	Extent of Alignment
exceeding 1650W, including those with/charged with a AC to DC adapter)		CNS 13783-1 (2013) or CNS 13803 (2003)		CISPR 14-1 (2011) CISPR 11 (1997)	MOD
		CNS 15663 (2013) Section 5 "Marking of Presence"		Nil	NEQ
<b>Cloth spin whizzer</b> (inspection scope: Rated voltage not exceeding single-phase 250V AC, including those with/charged with a AC to DC adapter)	ditto	CNS 60335-1 (2014)	√	IEC 60335-1 (2013)	MOD
		CNS 60335-2-4 (2015)		IEC 60335-2-4 (2012)	MOD
		CNS 13783-1 (2013)		CISPR 14-1 (2011)	MOD
		CNS 15663 (2013) Section 5 "Marking of Presence"		Nil	NEQ
<b>Electric air purifiers</b> (inspection scope: Only those using with a filter net, electrostatic precipitator, negative ionizer, ozone generator, ultra-violet light or photo-catalyst as purifying methods and rated voltage not exceeding single-phase 250V AC, including those with/charged with a AC to DC adapter, exclusive of those mounted in ducts or using air exchanging system with outdoor air convection or medical devices specified by	ditto	CNS 60335-1 (2014)	√	IEC 60335-1 (2013)	MOD
		CNS 60335-2-65 (2015)		IEC 60335-2-65 (2015)	MOD
		CNS 13783-1 (2013)		CISPR 14-1 (2011)	MOD
		CNS 15663 (2013) Section 5 "Marking of Presence"		Nil	NEQ

Product	Regulations	Standards			
		Domestic Standards	Please tick box if mandatory	Relevant International Standards	Extent of Alignment
the Pharmaceutical Affairs Act)					
<b>Household dish washers</b> (inspection scope: Single-phase 250V AC and rated power consumption not exceeding 1650W, including those with/charged with a AC to DC adapter)	ditto	CNS 60335-1 (2014)	√	IEC 60335-1 (2013)	MOD
		CNS 60335-2-5 (2015)		IEC 60335-2-5 (2012)	MOD
		CNS 13783-1 (2013)		CISPR 14-1 (2011)	MOD
		CNS 15663 (2013) Section 5 "Marking of Presence"		Nil	NEQ
<b>Washing machines</b> (inspection scope: Rated voltage not exceeding single-phase 250V AC, including those with/charged with a AC to DC adapter)	ditto	CNS 60335-1 (2014)	√	IEC 60335-1 (2013)	MOD
		CNS 60335-2-7 (2014)		IEC 60335-2-7 (2012)	MOD
		CNS 13783-1 (2013)		CISPR 14-1 (2011)	MOD
		CNS 15663 (2013) Section 5 "Marking of Presence"		Nil	NEQ
<b>Clothes dryers</b> (inspection scope: Rated voltage not exceeding single-phase 250V AC, including those with/charged with a AC to DC adapter)	ditto	CNS 60335-1 (2014)	√	IEC 60335-1 (2013)	MOD
		CNS 60335-2-11 (2014) or CNS 60335-2-43 (2015)		IEC 60335-2-11 (2012) IEC 60335-2-43 (2008)	MOD
		CNS 13783-1 (2013)		CISPR 14-1 (2011)	MOD
		CNS 15663 (2013) Section 5 "Marking of Presence"		Nil	NEQ
<b>Cooling fans</b> (inspection	ditto	CNS 60335-1 (2014)	√	IEC 60335-1 (2013)	MOD

Product	Regulations	Standards			
		Domestic Standards	Please tick box if mandatory	Relevant International Standards	Extent of Alignment
scope: Rated voltage not exceeding single-phase 250V AC and rated power consumption not exceeding 500W(if without electro-thermal devices), including those with/charged with a AC to DC adapter, those not intended for normal household use and with electro-thermal devices)		CNS 60335-2-80 (2015)		IEC 60335-2-80 (2008)	MOD
		CNS 13783-1 (2013)		CISPR 14-1 (2011)	MOD
		CNS 15663 (2013) Section 5 "Marking of Presence"		Nil	NEQ
<b>Dehumidifiers</b> (inspection scope: Only those with compressors, rated voltage not exceeding single-phase 250V AC and rated power consumption not exceeding 1000W, including those with/charged with a AC to DC adapter)	ditto	CNS 60335-1 (2014)	√	IEC 60335-1 (2013)	MOD
		CNS 60335-2-40 (2015)		IEC 60335-2-40 (2013)	MOD
		CNS 12492 (2010)		Nil	NEQ
		CNS 13783-1 (2013)		CISPR 14-1 (2011)	MOD
		CNS 15663 (2013) Section 5 "Marking of Presence"		Nil	NEQ
<b>Vacuum cleaners &amp; Water-suction cleaners</b> (inspection scope: Rated voltage not exceeding single-phase 250V AC, including those with/charged with a AC to DC adapter, exclusive of those for animal use)	ditto	CNS 60335-1 (2014)	√	IEC 60335-1 (2013)	MOD
		CNS 60335-2-2 (2015)		IEC 60335-2-2 (2012)	MOD
		CNS 13783-1 (2013)		CISPR 14-1 (2011)	MOD
		CNS 15663 (2013) Section 5 "Marking of Presence"		Nil	NEQ

Product	Regulations	Standards			
		Domestic Standards	Please tick box if mandatory	Relevant International Standards	Extent of Alignment
<b>Electric food grinders</b> (inspection scope: Vegetable slicers, bean slicers, cheese graters, vegetable graters, vegetable shredders and grain grinders(hopper capacity not exceeding 3L), rated voltage not exceeding single-phase 250V AC, including those with/charged with a AC to DC adapter)	ditto	CNS 60335-1 (2014)	√	IEC 60335-1 (2013)	MOD
		CNS 60335-2-14 (2015)		IEC 60335-2-14 (2012)	MOD
		CNS 13783-1 (2013)		CISPR 14-1 (2011)	MOD
		CNS 15663 (2013) Section 5 "Marking of Presence"		Nil	NEQ
<b>Electric food mixers</b> (inspection scope: Food blenders, juicers, cream whippers, egg beaters, food mixers, food processors, and mincers, rated voltage not exceeding single-phase 250V AC, including those with/charged with a AC to DC adapter)	ditto	CNS 60335-1 (2014)	√	IEC 60335-1 (2013)	MOD
		CNS 60335-2-14 (2015)		IEC 60335-2-14 (2012)	MOD
		CNS 13783-1 (2013)		CISPR 14-1 (2011)	MOD
		CNS 15663 (2013) Section 5 "Marking of Presence"		Nil	NEQ
<b>Electric juice extractors/ fruit squeezers</b> (inspection scope: Rated voltage not exceeding single-phase 250V AC, including those with/charged with a AC to DC adapter)	ditto	CNS 60335-1 (2014)	√	IEC 60335-1 (2013)	MOD
		CNS 60335-2-14 (2015)		IEC 60335-2-14 (2012)	MOD
		CNS 13783-1 (2013)		CISPR 14-1 (2011)	MOD
		CNS 15663 (2013) Section 5 "Marking of Presence"		Nil	NEQ

Product	Regulations	Standards			
		Domestic Standards	Please tick box if mandatory	Relevant International Standards	Extent of Alignment
<b>Coffee mills/ Coffee bean grinders</b> (inspection scope: Rated voltage not exceeding single-phase 250V AC and hopper capacity not exceeding 500g, including those with/charged with a AC to DC adapter)	ditto	CNS 60335-1 (2014)	√	IEC 60335-1 (2013)	MOD
		CNS 60335-2-14 (2015)		IEC 60335-2-14 (2012)	MOD
		CNS 13783-1 (2013)		CISPR 14-1 (2011)	MOD
		CNS 15663 (2013) Section 5 "Marking of Presence"		Nil	NEQ
<b>Electric ice shaving machine/ ice flaker</b> (inspection scope: Rated voltage not exceeding single-phase 250V AC, including those with/charged with a AC to DC adapter)	ditto	CNS 60335-1 (2014)	√	IEC 60335-1 (2013)	MOD
		CNS 60335-2-14 (2015)		IEC 60335-2-14 (2012)	MOD
		CNS 13783-1 (2013)		CISPR 14-1 (2011)	MOD
		CNS 15663 (2013) Section 5 "Marking of Presence"		Nil	NEQ
<b>Electric floor buffers, polishers, and waxers</b> (inspection scope: Rated voltage not exceeding single-phase 250V AC, including those with/charged with a AC to DC adapter)	ditto	CNS 60335-1 (2014)	√	IEC 60335-1 (2013)	MOD
		CNS 60335-2-10 (2015)		IEC 60335-2-10 (2008)	MOD
		CNS 13783-1 (2013)		CISPR 14-1 (2011)	MOD
		CNS 15663 (2013) Section 5 "Marking of Presence"		Nil	NEQ
<b>Electric insect killers</b> (inspection scope: Rated voltage not exceeding	ditto	CNS 60335-1 (2014)	√	IEC 60335-1 (2013)	MOD
		CNS 60335-2-59 (2015)		IEC 60335-2-59 (2009)	MOD
		CNS 13783-1 (2013)		CISPR 14-1 (2011)	MOD

Product	Regulations	Standards			
		Domestic Standards	Please tick box if mandatory	Relevant International Standards	Extent of Alignment
single-phase 250V AC, including those with/charged with a AC to DC adapter)		CNS 15663 (2013) Section 5 "Marking of Presence"		Nil	NEQ
<b>Electric shavers</b> (inspection scope: Rated voltage not exceeding single-phase 250V AC, including those with/charged with a AC to DC adapter)	ditto	CNS 60335-1 (2014)	√	IEC 60335-1 (2013)	MOD
		CNS 60335-2-8 (2015)		IEC 60335-2-8 (2012)	MOD
		CNS 13783-1 (2013)		CISPR 14-1 (2011)	MOD
		CNS 15663 (2013) Section 5 "Marking of Presence"		Nil	NEQ
<b>Electric hair clippers</b> (inspection scope: Rated voltage not exceeding single-phase 250V AC, including those with/charged with a AC to DC adapter, exclusive of those for animal use)	ditto	CNS 60335-1 (2014)	√	IEC 60335-1 (2013)	MOD
		CNS 60335-2-8 (2015)		IEC 60335-2-8 (2012)	MOD
		CNS 13783-1 (2013)		CISPR 14-1 (2011)	MOD
		CNS 15663 (2013) Section 5 "Marking of Presence"		Nil	NEQ
<b>Electric instantaneous water heaters</b> (inspection scope: Rated voltage not exceeding single-phase 250V AC,	ditto	CNS 60335-1 (2014)	√	IEC 60335-1 (2013)	MOD
		CNS 60335-2-35 (2016)		IEC 60335-2-35 (2012)	MOD
		CNS 13783-1 (2013) or CNS 13803 (2003)		CISPR 14-1 (2011) CISPR 11 (1997)	MOD

Product	Regulations	Standards			
		Domestic Standards	Please tick box if mandatory	Relevant International Standards	Extent of Alignment
including those with/charged with a AC to DC adapter)		CNS 15663 (2013) Section 5 "Marking of Presence"		Nil	NEQ
<b>Electric storage drink water heaters</b> (inspection scope: Rated voltage not exceeding single-phase 250V AC and capacity not exceeding 500L, including those with/charged with a AC to DC adapter)	ditto	CNS 60335-1 (2014)	√	IEC 60335-1 (2013)	MOD
		CNS 60335-2-15 (2014)		IEC 60335-2-15 (2012)	MOD
		CNS 13783-1 (2013) or CNS 13803 (2003)		CISPR 14-1 (2011) CISPR 11 (1997)	MOD
		CNS 15663 (2013) Section 5 "Marking of Presence"		Nil	NEQ
<b>Electric portable immersion heaters</b> (inspection scope: Rated voltage not exceeding single-phase 250V AC and rated output power not exceeding 1650W, including those with/charged with a AC to DC adapter)	ditto	CNS 60335-1 (2014)	√	IEC 60335-1 (2013)	MOD
		CNS 60335-2-74 (2015)		IEC 60335-2-74 (2009)	MOD
		CNS 13783-1 (2013)		CISPR 14-1 (2011)	MOD
		CNS 15663 (2013) Section 5 "Marking of Presence"		Nil	NEQ
<b>Electric room heaters</b> (inspection scope: Rated voltage not exceeding single-phase 250V AC, including those with/charged with a AC to DC adapter)	ditto	CNS 60335-1 (2014)	√	IEC 60335-1 (2013)	MOD
		CNS 60335-2-30 (2015) or CNS 60335-2-61 (2015)		IEC 60335-2-30 (2009) IEC 60335-2-61 (2009)	MOD
		CNS 13783-1 (2013)		CISPR 14-1 (2011)	MOD
		CNS 15663 (2013) Section 5 "Marking of		Nil	NEQ



Product	Regulations	Standards			
		Domestic Standards	Please tick box if mandatory	Relevant International Standards	Extent of Alignment
		Presence”			
<b>Hair dryers</b> (inspection scope: Rated voltage not exceeding single-phase 250V AC, including those with/charged with a AC to DC adapter, exclusive of those for animal use)	ditto	CNS 60335-1 (2014)	√	IEC 60335-1 (2013)	MOD
		CNS 60335-2-23 (2015)		IEC 60335-2-23 (2012)	MOD
		CNS 13783-1 (2013)		CISPR 14-1 (2011)	MOD
		CNS 15663 (2013) Section 5 “Marking of Presence”		Nil	NEQ
<b>Electric hot air brush</b> (inspection scope: Rated voltage not exceeding single-phase 250V AC, including those with/charged with a AC to DC adapter, exclusive of those for animal use)	ditto	CNS 60335-1 (2014)	√	IEC 60335-1 (2013)	MOD
		CNS 60335-2-23 (2015)		IEC 60335-2-23 (2012)	MOD
		CNS 13783-1 (2013)		CISPR 14-1 (2011)	MOD
		CNS 15663 (2013) Section 5 “Marking of Presence”		Nil	NEQ
<b>Electric hair setting curlers</b> (inspection scope: Rated voltage not exceeding single-phase 250V AC, including those with/charged with a AC to DC adapter, exclusive of those for animal use)	ditto	CNS 60335-1 (2014)	√	IEC 60335-1 (2013)	MOD
		CNS 60335-2-23 (2015)		IEC 60335-2-23 (2012)	MOD
		CNS 13783-1 (2013)		CISPR 14-1 (2011)	MOD
		CNS 15663 (2013) Section 5 “Marking of Presence”		Nil	NEQ
<b>Electric irons</b> (inspection scope: Rated voltage not	ditto	CNS 60335-1 (2014)	√	IEC 60335-1 (2013)	MOD
		CNS 60335-2-3 (2014)		IEC 60335-2-3 (2012)	MOD

Product	Regulations	Standards			
		Domestic Standards	Please tick box if mandatory	Relevant International Standards	Extent of Alignment
exceeding single-phase 250V AC, including those with/charged with a AC to DC adapter)		CNS 13783-1 (2013)		CISPR 14-1 (2011)	MOD
		CNS 15663 (2013) Section 5 "Marking of Presence"		Nil	NEQ
<b>Microwave ovens</b> (inspection scope: Rated voltage not exceeding single-phase 250V AC, including those with/charged with a AC to DC adapter)	ditto	CNS 60335-1 (2014)	√	IEC 60335-1 (2013)	MOD
		CNS 60335-2-25 (2016)		IEC 60335-2-25 (2014)	MOD
		CNS 13803 (2003)		CISPR 11 (1997)	MOD
		CNS 15663 (2013) Section 5 "Marking of Presence"		Nil	NEQ
<b>Electric ovens</b> (inspection scope: Rated voltage not exceeding single-phase 250V AC, including those with/charged with a AC to DC adapter)	ditto	CNS 60335-1 (2014)	√	IEC 60335-1 (2013)	MOD
		CNS 60335-2-6 (2015) or CNS 60335-2-9 (2016)		IEC 60335-2-6 (2014) IEC 60335-2-9 (2012)	MOD
		CNS 13783-1 (2013)		CISPR 14-1 (2011)	MOD
		CNS 15663 (2013) Section 5 "Marking of Presence"		Nil	NEQ
<b>Electric cookers</b> (inspection scope: Woks, slow cookers, electric bowls, deep fat fryers of volume not exceeding 5L, frying pans, cooking pans, and pressure cookers (rated	ditto	CNS 60335-1 (2014)	√	IEC 60335-1 (2013)	MOD
		CNS 60335-2-13 (2014) or CNS 60335-2-15 (2014)		IEC 60335-2-13 (2009) IEC 60335-2-15 (2012)	MOD
		CNS 13783-1 (2013) or CNS 13803 (2003)		CISPR 14-1 (2011) CISPR 11 (1997)	MOD

Product	Regulations	Standards			
		Domestic Standards	Please tick box if mandatory	Relevant International Standards	Extent of Alignment
cooking pressure not exceeding 140kpa and rated capacity not exceeding 10L), rated voltage not exceeding single-phase 250V AC, including those with/charged with a AC to DC adapter)		CNS 15663 (2013) Section 5 "Marking of Presence"		Nil	NEQ
<b>Induction hotplates/ electromagnetic ovens</b> (inspection scope: Rated voltage not exceeding single-phase 250V AC, including those with/charged with a AC to DC adapter)	ditto	CNS 60335-1 (2014)	√	IEC 60335-1 (2013)	MOD
		CNS 60335-2-6 (2015) or CNS 60335-2-9 (2016)		IEC 60335-2-6 (2014) IEC 60335-2-9 (2012)	MOD
		CNS 13803 (2003)		CISPR 11 (1997)	MOD
		CNS 15663 (2013) Section 5 "Marking of Presence"		Nil	NEQ
<b>Indoor electric roasting ovens and grills</b> (inspection scope: Griddles, grills, breadmakers, roasted pots and roasters, rated voltage not exceeding single-phase 250V AC, including those with/charged with a AC to DC adapter)	ditto	CNS 60335-1 (2014)	√	IEC 60335-1 (2013)	MOD
		CNS 60335-2-6 (2015) or CNS 60335-2-9 (2016)		IEC 60335-2-6 (2014) IEC 60335-2-9 (2012)	MOD
		CNS 13783-1 (2013)		CISPR 14-1 (2011)	MOD
		CNS 15663 (2013) Section 5 "Marking of Presence"		Nil	NEQ
<b>Electric steamers</b> (inspection scope: Rated voltage not exceeding single-phase 250V	ditto	CNS 60335-1 (2014)	√	IEC 60335-1 (2013)	MOD
		CNS 60335-2-15 (2014) or CNS 60335-2-6 (2015)		IEC 60335-2-15 (2012) IEC 60335-2-6 (2014)	MOD

Product	Regulations	Standards			
		Domestic Standards	Please tick box if mandatory	Relevant International Standards	Extent of Alignment
AC and rated power consumption not exceeding 1650W, including those with/charged with a AC to DC adapter)		CNS 13783-1 (2013) or CNS 13803 (2003)		CISPR 14-1 (2011) CISPR 11 (1997)	MOD
		CNS 15663 (2013) Section 5 "Marking of Presence"		Nil	NEQ
<b>Electric pots/ Kettles</b> (inspection scope: Rated voltage not exceeding single-phase 250V AC and rated water capacity not exceeding 10L, including those with/charged with a AC to DC adapter)	ditto	CNS 60335-1 (2014)	√	IEC 60335-1 (2013)	MOD
		CNS 60335-2-15 (2014) & Section 5.4, 5.7, and 11 of CNS 12625 (2012) (if rated power consumption not exceeding 1.5kW)		IEC 60335-2-15 (2012)	MOD
				Nil	NEQ
		CNS 13783-1 (2013) or CNS 13803 (2003)		CISPR 14-1 (2011) CISPR 11 (1997)	MOD
		CNS 15663 (2013) Section 5 "Marking of Presence"		Nil	NEQ
<b>Electric coffee pots</b> (inspection scope: Rated power not exceeding single-phase 250V AC and rated power consumption not	ditto	CNS 60335-1 (2014)	√	IEC 60335-1 (2013)	MOD
		CNS 60335-2-15 (2014)		IEC 60335-2-15 (2012)	MOD
		CNS 13783-1 (2013) or CNS 13803 (2003)		CISPR 14-1 (2011) CISPR 11 (1997)	MOD

Product	Regulations	Standards			
		Domestic Standards	Please tick box if mandatory	Relevant International Standards	Extent of Alignment
exceeding 1650W, including those with/charged with a AC to DC adapter)		CNS 15663 (2013) Section 5 "Marking of Presence"		Nil	NEQ
<b>Toasters</b> (inspection scope: Rated voltage not exceeding single-phase 250V AC, including those with/charged with a AC to DC adapter, exclusive of those transferring with rotary tracks)	ditto	CNS 60335-1 (2014)	√	IEC 60335-1 (2013)	MOD
		CNS 60335-2-9 (2016)		IEC 60335-2-9 (2012)	MOD
		CNS 13783-1 (2013)		CISPR 14-1 (2011)	MOD
		CNS 15663 (2013) Section 5 "Marking of Presence"		Nil	NEQ
<b>Electric hotplates</b> (inspection scope: Rated voltage not exceeding single-phase 250V AC, including those with/charged with a AC to DC adapter)	ditto	CNS 60335-1 (2014)	√	IEC 60335-1 (2013)	MOD
		CNS 60335-2-6 (2015) or CNS 60335-2-9 (2016)		IEC 60335-2-6 (2014) IEC 60335-2-9 (2012)	MOD
		CNS 13783-1 (2013)		CISPR 14-1 (2011)	MOD
		CNS 15663 (2013) Section 5 "Marking of Presence"		Nil	NEQ
<b>Electric meat grills/ roasters</b> (inspection scope: Rated voltage not exceeding single-phase 250V AC, including those with/charged with a AC to DC adapter)	ditto	CNS 60335-1 (2014)	√	IEC 60335-1 (2013)	MOD
		CNS 60335-2-9 (2016)		IEC 60335-2-9 (2012)	MOD
		CNS 13783-1 (2013)		CISPR 14-1 (2011)	MOD
		CNS 15663 (2013) Section 5 "Marking of		Nil	NEQ

Product	Regulations	Standards			
		Domestic Standards	Please tick box if mandatory	Relevant International Standards	Extent of Alignment
		Presence”			
<b>Electric ranges</b> (inspection scope: Rated voltage not exceeding single-phase 250V AC and rated power consumption not exceeding 10kw, including those with/charged with a AC to DC adapter)	ditto	CNS 60335-1 (2014)	√	IEC 60335-1 (2013)	MOD
		CNS 60335-2-6 (2015)		IEC 60335-2-6 (2014)	MOD
		CNS 13783-1 (2013) or CNS 13803 (2003)		CISPR 14-1 (2011) CISPR 11 (1997)	MOD
		CNS 15663 (2013) Section 5 “Marking of Presence”		Nil	NEQ
<b>Electric-thermal dish dryers</b> (inspection scope: Rated voltage not exceeding single-phase 250V AC and rated power consumption not exceeding 1650W, including those with/charged with a AC to DC adapter)	ditto	CNS 60335-1 (2014)	√	IEC 60335-1 (2013)	MOD
		CNS 60335-2-5 (2015)		IEC 60335-2-5 (2012)	MOD
		CNS 13783-1 (2013)		CISPR 14-1 (2011)	MOD
		CNS 15663 (2013) Section 5 “Marking of Presence”		Nil	NEQ
<b>Electric two-sided cooking plates</b> (inspection scope: Rated voltage not exceeding single-phase 250V AC and rated power consumption not exceeding 1650W, including those with/charged with a AC to DC adapter)	ditto	CNS 60335-1 (2014)	√	IEC 60335-1 (2013)	MOD
		CNS 60335-2-9 (2016)		IEC 60335-2-9 (2012)	MOD
		CNS 13783-1 (2013)		CISPR 14-1 (2011)	MOD
		CNS 15663 (2013) Section 5 “Marking of Presence”		Nil	NEQ
<b>Electro-thermal bedding and</b>	ditto	CNS 60335-1 (2014)	√	IEC 60335-1 (2013)	MOD

Product	Regulations	Standards			
		Domestic Standards	Please tick box if mandatory	Relevant International Standards	Extent of Alignment
clothing dryers (inspection scope: Rated voltage not exceeding single-phase 250V AC, including those with/charged with a AC to DC adapter)		CNS 60335-2-43 (2015)		IEC 60335-2-43 (2008)	MOD
		CNS 13783-1 (2013)		CISPR 14-1 (2011)	MOD
		CNS 15663 (2013) Section 5 "Marking of Presence"		Nil	NEQ
Electric fish tank heaters (inspection scope: Rated voltage not exceeding single-phase 250V AC and rated power consumption not exceeding 1650W, including those with/charged with a AC to DC adapter)	ditto	CNS 60335-1 (2014)	√	IEC 60335-1 (2013)	MOD
		CNS 60335-2-55 (2015)		IEC 60335-2-55 (2008)	MOD
		CNS 13783-1 (2013)		CISPR 14-1 (2011)	MOD
		CNS 15663 (2013) Section 5 "Marking of Presence"		Nil	NEQ
Electric warming plates (inspection scope: Rated voltage not exceeding single-phase 250V AC and rated power consumption not exceeding 1650W, including those with/charged with a AC to DC adapter)	ditto	CNS 60335-1 (2014)	√	IEC 60335-1 (2013)	MOD
		CNS 60335-2-12 (2014)		IEC 60335-2-12 (2008)	MOD
		CNS 13783-1 (2013) or CNS 13803 (2003)		CISPR 14-1 (2011) CISPR 11 (1997)	MOD
		CNS 15663 (2013) Section 5 "Marking of Presence"		Nil	NEQ
Electro-thermal mosquito killers (inspection scope:	ditto	CNS 60335-1 (2014)	√	IEC 60335-1 (2013)	MOD
		CNS 13783-1 (2013)		CISPR 14-1 (2011)	MOD

Product	Regulations	Standards			
		Domestic Standards	Please tick box if mandatory	Relevant International Standards	Extent of Alignment
Rated voltage not exceeding single-phase 250V AC, including those with/charged with a AC to DC adapter)		CNS 15663 (2013) Section 5 "Marking of Presence"		Nil	NEQ
<b>Electro-thermal aromas/scent diffusers</b> (inspection scope: Rated voltage not exceeding single-phase 250V AC, including those with/charged with a AC to DC adapter)	ditto	CNS 60335-1 (2014)	√	IEC 60335-1 (2013)	MOD
		CNS 13783-1 (2013)		CISPR 14-1 (2011)	MOD
		CNS 15663 (2013) Section 5 "Marking of Presence"		Nil	NEQ
<b>Electro-thermal meal box heaters</b> (inspection scope: Rated voltage not exceeding single-phase 250V AC and rated power consumption not exceeding 1650W, including those with/charged with a AC to DC adapter)	ditto	CNS 60335-1 (2014)	√	IEC 60335-1 (2013)	MOD
		CNS 60335-2-6 (2015)		IEC 60335-2-6 (2014)	MOD
		CNS 13783-1 (2013) or CNS 13803 (2003)		CISPR 14-1 (2011) CISPR 11 (1997)	MOD
		CNS 15663 (2013) Section 5 "Marking of Presence"		Nil	NEQ
<b>Electro-thermal pots</b> (inspection scope: Rated voltage not exceeding single-phase 250V AC and rated power consumption not exceeding 1650W, including those with/charged with a AC to DC adapter)	ditto	CNS 60335-1 (2014)	√	IEC 60335-1 (2013)	MOD
		CNS 60335-2-15 (2014)		IEC 60335-2-15 (2012)	MOD
		CNS 13783-1 (2013) or CNS 13803 (2003)		CISPR 14-1 (2011) CISPR 11 (1997)	MOD
		CNS 15663 (2013) Section 5 "Marking of Presence"		Nil	NEQ



Product	Regulations	Standards			
		Domestic Standards	Please tick box if mandatory	Relevant International Standards	Extent of Alignment
<b>Food warming appliance</b> (inspection scope: Rated voltage not exceeding single-phase 250V AC and rated power consumption not exceeding 1650W, including those with/charged with a AC to DC adapter)	ditto	CNS 60335-1 (2014)	√	IEC 60335-1 (2013)	MOD
		CNS 60335-2-6 (2015) or CNS 60335-2-9 (2016)		IEC 60335-2-6 (2014) IEC 60335-2-9 (2012)	MOD
		CNS 13783-1 (2013)		CISPR 14-1 (2011)	MOD
		CNS 15663 (2013) Section 5 "Marking of Presence"		Nil	NEQ
<b>Electric warming pots/ Thermos</b> (inspection scope: Rated voltage not exceeding single-phase 250V AC and rated power consumption not exceeding 1650W, including those with/charged with a AC to DC adapter)	ditto	CNS 60335-1 (2014)	√	IEC 60335-1 (2013)	MOD
		CNS 60335-2-15 (2014)		IEC 60335-2-15 (2012)	MOD
		CNS 13783-1 (2013) or CNS 13803 (2003)		CISPR 14-1 (2011) CISPR 11 (1997)	MOD
		CNS 15663 (2013) Section 5 "Marking of Presence"		Nil	NEQ
<b>Feeding bottle sterilizers</b> (inspection scope: Only below 300V AC, single phase)	ditto	CNS 60335-1 (2014)	√	IEC 60335-1 (2013)	MOD
		CNS 60335-2-15 (2014)		IEC 60335-2-15 (2012)	MOD
		CNS 13783-1 (2013)		CISPR 14-1 (2011)	MOD
		CNS 15663 (2013) Section 5 "Marking of Presence"		Nil	NEQ
<b>Egg boilers</b> (inspection	ditto	CNS 60335-1 (2014)	√	IEC 60335-1 (2013)	MOD

Product	Regulations	Standards			
		Domestic Standards	Please tick box if mandatory	Relevant International Standards	Extent of Alignment
scope: Rated voltage not exceeding single-phase 250V AC and rated power consumption not exceeding 1650W, including those with/charged with a AC to DC adapter)		CNS 60335-2-15 (2014)		IEC 60335-2-15 (2012)	MOD
		CNS 13783-1 (2013)		CISPR 14-1 (2011)	MOD
		CNS 15663 (2013) Section 5 "Marking of Presence"		Nil	NEQ
<b>Water filled foot massagers</b> (inspection scope: Rated voltage not exceeding single-phase 250V AC, including those air pressure type equipment or with/charged with a AC to DC adapter, exclusive of those medical devices specified by the Pharmaceutical Affairs Act)	ditto	CNS 60335-1 (2014)	√	IEC 60335-1 (2013)	MOD
		CNS 60335-2-32 (2015)		IEC 60335-2-32 (2013)	MOD
		CNS 13783-1 (2013)		CISPR 14-1 (2011)	MOD
		CNS 15663 (2013) Section 5 "Marking of Presence"		Nil	NEQ
<b>Electric massage appliances</b> (inspection scope: Rated voltage not exceeding single-phase 250V AC, including those air pressure type equipment or with/charged with a AC to DC adapter, exclusive of those medical devices specified by the Pharmaceutical Affairs Act)	ditto	CNS 60335-1 (2014)	√	IEC 60335-1 (2013)	MOD
		CNS 60335-2-32 (2015)		IEC 60335-2-32 (2013)	MOD
		CNS 13783-1 (2013)		CISPR 14-1 (2011)	MOD
		CNS 15663 (2013) Section 5 "Marking of Presence"		Nil	NEQ
<b>Water Dispenser</b> (inspection	ditto	CNS 60335-1 (2014)	√	IEC 60335-1 (2013)	MOD

Product	Regulations	Standards			
		Domestic Standards	Please tick box if mandatory	Relevant International Standards	Extent of Alignment
scope: Including water dispenser only supplied by bottled and packaged water, inspection scope: only Below 250V)		CNS 60335-2-15 (2014)		IEC 60335-2-15 (2012)	MOD
		CNS 13516 (2014) Section 6.3, 6.7, 6.9, 6.11 and 7.1(i)		Nil	NEQ
		CNS 13783-1 (2013) or CNS 13803 (2003)		CISPR 14-1 (2011) CISPR 11 (1997)	MOD
		CNS 15663 (2013) Section 5 "Marking of Presence"		Nil	NEQ
<b>Drinking water supplier</b> (inspection scope: Rated voltage not exceeding single-phase 250V AC, including those with/charged with a AC to DC adapter)	ditto	CNS 60335-1 (2014)	√	IEC 60335-1 (2013)	MOD
		CNS 60335-2-15 (2014)		IEC 60335-2-15 (2012)	MOD
		CNS 3910 (2016) Section 5, 8.3, 10 and 13		Nil	NEQ
		CNS 13783-1 (2013) or CNS 13803 (2003)		CISPR 14-1 (2011) CISPR 11 (1997)	MOD
		CNS 15663 (2013) Section 5 "Marking of Presence"		Nil	NEQ
<b>Electric storage tank water heaters</b> (inspection scope: Only single -phase not exceeding AC 300V)	ditto	CNS 3765 (2005)	√	IEC 60335-1 (2001)	MOD
		IEC 60335-2-21 (2004)		IEC 60335-2-21 (2004)	IDT
		CNS 11010 (2013) Section 8.11 and 8.14 8.14, the value of E <sub>st,24</sub> must meet the		Nil	NEQ

Product	Regulations	Standards			
		Domestic Standards	Please tick box if mandatory	Relevant International Standards	Extent of Alignment
		requirements of Minimum Energy Performance Standard (MEPS) of Electric Storage Water Heaters			
		CNS 13783-1 (2004)		CISPR 14-1 (2000)	MOD
		CNS 15663 (2013) Section 5 "Marking of Presence"		Nil	NEQ
<b>Air conditioners with hermetic type compressor</b> (inspection scope: Those having single phases not exceeding 250V or three phases not exceeding 600V, and cooling capacity not exceeding 71 kW)	ditto	CNS 3765 (2005)	√	IEC 60335-1 (2001)	MOD
		IEC 60335-2-40 (2005)		IEC 60335-2-40 (2005)	IDT
		CNS 3615 (2013) ("Heating Performance" in Section 5.7, 5.8, 5.9 and 5.10 is excluded)		Nil	NEQ
		CNS 13783-1 (2004) or CNS 13438 (2006)		CISPR 14-1 (2000) CISPR 22 (2005)	MOD
		CNS 15663 (2013) Section 5 "Marking of Presence"		Nil	NEQ
<b>Plugs and socket-outlets for fixed wiring</b> (inspection scope: Voltage not exceeding 250 Vac with types and dimensions same or consistent with the national standard CNS 690)	ditto	CNS 690 (2016)	√	Nil	NEQ
		CNS 15767-1 (2014)		IEC 60884-1 (2006)	MOD
		CNS 15663 (2013) Section 5 "Marking of Presence"		Nil	NEQ

Product	Regulations	Standards			
		Domestic Standards	Please tick box if mandatory	Relevant International Standards	Extent of Alignment
<b>Adapters</b> (inspection scope: Voltage not exceeding 250 Vac with types and dimensions same or consistent with the national standard CNS 690, excluding the type of plug-end conforms to figure 16 of CNS 690)	ditto	CNS 690 (2016)	√	Nil	NEQ
		CNS 15767-1 (2014)		IEC 60884-1 (2006)	MOD
		CNS 15767-2-5 (2014)		IEC 60884-2-5 (1995)	MOD
		CNS 15663 (2013) Section 5 "Marking of Presence"		Nil	NEQ
<b>Cord extension sets</b> (inspection scope: Voltage not exceeding 250 Vac)	ditto	CNS 690 (2016)	√	Nil	NEQ
		CNS 15767-1 (2014)		IEC 60884-1 (2006)	MOD
		CNS 15767-2-7 (2016)		IEC 60884-2-7 (2011)	MOD
		CNS 15663 (2013) Section 5 "Marking of Presence"		Nil	NEQ
<b>Non-detachable cord sets</b> (inspection scope: Voltage not exceeding 250 Vac)	ditto	CNS 690 (2016)	√	Nil	NEQ
		CNS 15767-1 (2014)		IEC 60884-1 (2006)	MOD
		CNS 15663 (2013) Section 5 "Marking of Presence"		Nil	NEQ
<b>Detachable cord sets</b> (inspection scope: Voltage not exceeding 250 Vac)	ditto	CNS 690 (2016)	√	Nil	NEQ
		CNS 15872 (2016)		Nil	NEQ
		CNS 6797 (1991)		Nil	NEQ

Product	Regulations	Standards			
		Domestic Standards	Please tick box if mandatory	Relevant International Standards	Extent of Alignment
		CNS 15663 (2013) Section 5 "Marking of Presence"		Nil	NEQ
<b>Cord sets</b> (inspection scope: Voltage not exceeding 250 Vac)	ditto	CNS 690 (2016)	√	Nil	NEQ
		CNS 60799 (2016)		IEC 60799 (1998)	MOD
		IEC 60320-1 (2001)		IEC 60320-1 (2001)	IDT
		CNS 15663 (2013) Section 5 "Marking of Presence"		Nil	NEQ
<b>Cable reels</b> (inspection scope: Voltage not exceeding 250 Vac)	ditto	CNS 690 (2016)	√	Nil	NEQ
		CNS 61242 (2016)		IEC 61242 (2015)	MOD
		CNS 15663 (2013) Section 5 "Marking of Presence"		Nil	NEQ
<b>Electric bells</b> (inspection scope: Only those not exceeding AC 300V)	ditto	CNS 8799 (1990)	√	Nil	NEQ
		CNS 15663 (2013) Section 5 "Marking of Presence"		Nil	NEQ
<b>No fuse breakers</b> (inspection scope: With leakage protection function, only those rated voltage not exceeding 600V, rated current not exceeding 800A, and rupture capacity not	ditto	CNS 14816-2 (2004) or	√	IEC 60947-2 (2001)	MOD
		IEC 60898-1 (2003)		IEC 60898-1 (2003)	IDT
		CNS 15663 (2013) Section 5 "Marking of Presence"		Nil	NEQ

Product	Regulations	Standards			
		Domestic Standards	Please tick box if mandatory	Relevant International Standards	Extent of Alignment
exceeding 220V/50kA, 380V/30kA, 440V/25kA, or 600V/20kA)					
<b>Leakage circuit breakers</b> (inspection scope: Only those rated voltage not exceeding 600V, rated current not exceeding 225A. For those with no fuse switch function, rupture capacity not exceeding 220V/50kA, 380V/30kA, 440V/25kA, or 600V/20kA)	ditto	CNS 5422 (2006) or	√	Nil	NEQ
		IEC 61008-1 (2002) or		IEC 61008-1 (2002)	IDT
		IEC 61009-1 (2003)		IEC 61009-1 (2003)	
		CNS 15663 (2013) Section 5 "Marking of Presence"		Nil	NEQ
<b>Household switch for fixed wiring</b> (inspection scope: Only not exceeding 300V)	ditto	CNS 695 (1987) or	√	Nil	NEQ
		IEC 60669-1 (2000)		IEC 60669-1 (2000)	IDT
		CNS 15663 (2013) Section 5 "Marking of Presence"		Nil	NEQ
<b>Knife switch</b> (inspection scope: Only not exceeding 300V)	ditto	CNS 1488 (1993) or	√	Nil	NEQ
		CNS 696 (1984)		Nil	
		CNS 15663 (2013) Section 5 "Marking of Presence"		Nil	NEQ
<b>Plugs and socket-outlets for appliances</b> (inspection scope: Only not exceeding 300V)	ditto	CNS 6797 (1991)	√	Nil	NEQ
		CNS 15663 (2013) Section 5 "Marking of Presence"		Nil	NEQ

Product	Regulations	Standards			
		Domestic Standards	Please tick box if mandatory	Relevant International Standards	Extent of Alignment
<b>Polyvinyl chloride(PVC) insulated power cables</b> (inspection scope: Only those without connectors and rated voltage not exceeding 1000V but over 80V)	ditto	CNS 3301 (1989) or	√	Nil	NEQ
		CNS 6556 (1984) or	√	Nil	NEQ
		IEC 60227-1 (1998) + IEC 60227-3 (1997) or IEC 60227-4 (1997) or IEC 60227-5 (2003) or IEC 60227-6 (2001) or IEC 60227-7 (2003)	√	IEC 60227-1 (1998) IEC 60227-3 (1997) IEC 60227-4 (1997) IEC 60227-5 (2003) IEC 60227-6 (2001) IEC 60227-7 (2003)	IDT
		CNS 15663 (2013) Section 5 "Marking of Presence"	√	Nil	NEQ
<b>Polyvinyl chloride(PVC) insulated wires</b> (inspection scope: Only those without connectors and rated voltage not exceeding 1000V but over 80V)	ditto	CNS 679 (1998) or	√	Nil	NEQ
		IEC 60227-1 (1998) + IEC 60227-3 (1997) or IEC 60227-4 (1997) or IEC 60227-5 (2003) or IEC 60227-6 (2001) or IEC 60227-7 (2003)		IEC 60227-1 (1998) IEC 60227-3 (1997) IEC 60227-4 (1997) IEC 60227-5 (2003) IEC 60227-6 (2001) IEC 60227-7 (2003)	IDT
		CNS 15663 (2013) Section 5 "Marking of Presence"		Nil	NEQ
<b>Rubber insulated wires</b> (inspection scope: Only those without connectors and rated	ditto	CNS 675 (2004) or	√	Nil	NEQ
		IEC 60245-1 (2003) + IEC 60245-4 (2004)		IEC 60245-1 (2003) IEC 60245-4 (2004)	IDT



Product	Regulations	Standards			
		Domestic Standards	Please tick box if mandatory	Relevant International Standards	Extent of Alignment
voltage not exceeding 1000V but over 80V)		CNS 15663 (2013) Section 5 "Marking of Presence"		Nil	NEQ
<b>Rubber flexible cords</b> (inspection scope: Only those without connectors and rated voltage not exceeding 1000V but over 80V)	ditto	CNS 546 (2004) or	√	Nil	NEQ
		IEC 60245-1 (2003) + IEC 60245-4 (2004)		IEC 60245-1 (2003) IEC 60245-4 (2004)	IDT
		CNS 15663 (2013) Section 5 "Marking of Presence"		Nil	NEQ
<b>Polyvinyl chloride(PVC) flexible cords</b> (inspection scope: Only those without connectors and rated voltage not exceeding 1000V but over 80V)	ditto	CNS 3199 (1994) or	√	Nil	NEQ
		IEC 60227-1 (1998) + IEC 60227-3 (1997) or IEC 60227-4 (1997) or IEC 60227-5 (2003) or IEC 60227-6 (2001) or IEC 60227-7 (2003)		IEC 60227-1 (1998) IEC 60227-3 (1997) IEC 60227-4 (1997) IEC 60227-5 (2003) IEC 60227-6 (2001) IEC 60227-7 (2003)	IDT
		CNS 15663 (2013) Section 5 "Marking of Presence"		Nil	NEQ
<b>Rubber insulated lead wires</b> (inspection scope: Only those without connectors and rated voltage not exceeding 1000V but over 80V)	ditto	CNS 5747 (2004) or	√	Nil	NEQ
		IEC 60245-1 (2003) + IEC 60245-4 (2004)		IEC 60245-1 (2003) IEC 60245-4 (2004)	IDT
		CNS 15663 (2013) Section 5 "Marking of		Nil	NEQ

Product	Regulations	Standards			
		Domestic Standards	Please tick box if mandatory	Relevant International Standards	Extent of Alignment
		Presence"			
<b>Polyvinyl chloride(PVC) insulated wires for electric apparatus</b> (inspection scope: Only those without connectors and rated voltage not exceeding 1000V but over 80V)	ditto	CNS 6070 (1986) or	√	Nil	NEQ
		IEC 60227-1 (1998) + IEC 60227-3 (1997) or IEC 60227-4 (1997) or IEC 60227-5 (2003) or IEC 60227-6 (2001) or IEC 60227-7 (2003)		IEC 60227-1 (1998) IEC 60227-3 (1997) IEC 60227-4 (1997) IEC 60227-5 (2003) IEC 60227-6 (2001) IEC 60227-7 (2003)	IDT
		CNS 15663 (2013) Section 5 "Marking of Presence"		Nil	NEQ
<b>Grade Heat-resistant PVC insulated wires</b> (inspection scope: Only those without connectors and rated voltage not exceeding 1000V but over 80V)	ditto	CNS 8379 (1995) or	√	Nil	NEQ
		IEC 60227-1 (1998) + IEC 60227-3 (1997) or IEC 60227-4 (1997) or IEC 60227-5 (2003) or IEC 60227-6 (2001) or IEC 60227-7 (2003)		IEC 60227-1 (1998) IEC 60227-3 (1997) IEC 60227-4 (1997) IEC 60227-5 (2003) IEC 60227-6 (2001) IEC 60227-7 (2003)	IDT
		CNS 15663 (2013) Section 5 "Marking of Presence"		Nil	NEQ
<b>Polyvinyl chloride(PVC)</b>	ditto	CNS 8559 (1987) or	√	Nil	NEQ

Product	Regulations	Standards			
		Domestic Standards	Please tick box if mandatory	Relevant International Standards	Extent of Alignment
<b>insulated wires for outdoor use</b> (inspection scope: Only those without connectors and rated voltage not exceeding 1000V but over 80V)		IEC 60227-1 (1998) + IEC 60227-3 (1997) or IEC 60227-4 (1997) or IEC 60227-5 (2003) or IEC 60227-6 (2001) or IEC 60227-7 (2003)	√	IEC 60227-1 (1998) IEC 60227-3 (1997) IEC 60227-4 (1997) IEC 60227-5 (2003) IEC 60227-6 (2001) IEC 60227-7 (2003)	IDT
		CNS 15663 (2013) Section 5 "Marking of Presence"		Nil	NEQ
<b>Polyvinyl chloride(PVC) insulated wires</b> (inspection scope: Only those without connectors and rated voltage not exceeding 1000V but over 80V)	ditto	CNS 10314 (1983) or	√	Nil	NEQ
		IEC 60227-1 (1998) + IEC 60227-3 (1997) or IEC 60227-4 (1997) or IEC 60227-5 (2003) or IEC 60227-6 (2001) or IEC 60227-7 (2003)		IEC 60227-1 (1998) IEC 60227-3 (1997) IEC 60227-4 (1997) IEC 60227-5 (2003) IEC 60227-6 (2001) IEC 60227-7 (2003)	IDT
		CNS 15663 (2013) Section 5 "Marking of Presence"		Nil	NEQ
<b>Polyvinyl chloride(PVC)</b>	ditto	CNS 7781 (1987) or	√	Nil	NEQ

Product	Regulations	Standards			
		Domestic Standards	Please tick box if mandatory	Relevant International Standards	Extent of Alignment
<b>insulated service wires</b> (inspection scope: Only those without connectors and rated voltage not exceeding 1000V but over 80V)		IEC 60227-1 (1998) + IEC 60227-3 (1997) or IEC 60227-4 (1997) or IEC 60227-5 (2003) or IEC 60227-6 (2001) or IEC 60227-7 (2003)		IEC 60227-1 (1998) IEC 60227-3 (1997) IEC 60227-4 (1997) IEC 60227-5 (2003) IEC 60227-6 (2001) IEC 60227-7 (2003)	IDT
		CNS 15663 (2013) Section 5 "Marking of Presence"		Nil	NEQ
<b>Rubber insulated portable flexible cables</b> (inspection scope: Only those without connectors and rated voltage not exceeding 1000V but over 80V)	ditto	CNS 10741 (2004) or	√	Nil	NEQ
		CNS 10599 (2004) or		Nil	NEQ
		IEC 60245-1 (2003) + IEC 60245-4 (2004)		IEC 60245-1 (2003) IEC 60245-4 (2004)	IDT
		CNS 15663 (2013) Section 5 "Marking of Presence"		Nil	NEQ
<b>Self-ballasted fluorescent lamps</b>	ditto	CNS 14125 (2014) excluding the sections "Low Temperature Starting Time" & "UV Radiation"	√	Nil	NEQ
		CNS 14115 (2009)		CISPR 15 (2005)	MOD
		CNS 15663 (2013) Section 5 "Marking of Presence"		Nil	NEQ

Product	Regulations	Standards			
		Domestic Standards	Please tick box if mandatory	Relevant International Standards	Extent of Alignment
Hot Cathode Fluorescent Lamp	ditto	CNS 691 (2014)	√	Nil	NEQ
		CNS 15663 (2013) Section 5 "Marking of Presence"		Nil	NEQ
AC Supplied Ballasts	ditto	CNS 13755 (2014)	√	Nil	NEQ
		CNS 927 (2006)		Nil	NEQ
		CNS 15663 (2013) Section 5 "Marking of Presence"		Nil	NEQ
Self-ballasted LED lamps (inspection scope: Only voltage range not exceeding 300V but over 50V, single-phase)	ditto	CNS 15436 (2012)	√	IEC 62560 (2011)	MOD
		CNS 15630 (2012)		Nil	NEQ
		CNS 14115 (2009)		CISPR 15 (2005)	MOD
		CNS 15663 (2013) Section 5 "Marking of Presence"		Nil	NEQ
Fluorescent lamps, hot cathode (inspection scope: Only Compact fluorescent lamps)	ditto	CNS 14576 (2007)	√	Nil	NEQ
		CNS 15663 (2013) Section 5 "Marking of Presence"		Nil	NEQ
Electric lamps for general indoor lighting purposes (inspection scope: Only	ditto	CNS 14335 (1999)	√	IEC 60598-1 (1996)	MOD
		IEC 60598-2-1 (1979) or IEC 60598-2-2 (1979) or		IEC 60598-2-1 (1979) IEC 60598-2-2 (1979)	IDT

Product	Regulations	Standards				
		Domestic Standards	Please tick box if mandatory	Relevant International Standards	Extent of Alignment	
including chandelier and other ceiling or wall lighting fittings, exclusive of those used for public places or on streets)		IEC 60598-2-4 (1997) or IEC 60598-2-6 (1994) or IEC 60598-2-20 (1998) or IEC 60598-2-23 (1996)		IEC 60598-2-4 (1997) IEC 60598-2-6 (1994) IEC 60598-2-20 (1998) IEC 60598-2-23 (1996)		
		CNS 14115 (2004)		CISPR 15 (2000)		MOD
		CNS 15663 (2013) Section 5 "Marking of Presence"		Nil		NEQ
<b>Electric table, desk, bedside, or floor-standing lamps for general indoor lighting use</b> (inspection scope: Only not exceeding AC 300V)	ditto	CNS 14335 (1999)	√	IEC 60598-1 (1996)	MOD	
		IEC 60598-2-4 (1997) or IEC 60598-2-6 (1994)		IEC 60598-2-4 (1997) IEC 60598-2-6 (1994)	IDT	
		CNS 14115 (2004)		CISPR 15 (2000)	MOD	
		CNS 15663 (2013) Section 5 "Marking of Presence"		Nil	NEQ	
<b>Lighting sets used for Christmas trees</b> (inspection scope: Lighting chains not exceeding AC 300V)	ditto	CNS 14335 (1999)	√	IEC 60598-1 (1996)	MOD	
		IEC 60598-2-20 (1998)		IEC 60598-2-20 (1998)	IDT	
		CNS 15663 (2013) Section 5 "Marking of Presence"		Nil	NEQ	
<b>Buddhistic lights for table</b>	ditto	CNS 14335 (1999)	√	IEC 60598-1 (1996)	MOD	
		IEC 60598-2-1 (1987) or IEC 60598-2-2 (1997) or		IEC 60598-2-1 (1987) IEC 60598-2-2 (1997)	IDT	

Product	Regulations	Standards				
		Domestic Standards	Please tick box if mandatory	Relevant International Standards	Extent of Alignment	
		IEC 60598-2-4 (1997) or IEC 60598-2-6 (1996) or IEC 60598-2-23 (2001)		IEC 60598-2-4 (1997) IEC 60598-2-6 (1996) IEC 60598-2-23 (2001)		
		CNS 14115 (2004)		CISPR 15 (2000)		MOD
		CNS 15663 (2013) Section 5 "Marking of Presence"		Nil		NEQ
<b>Aquarium lighting fixture</b>	ditto	CNS 14335 (1999)	√	IEC 60598-1 (1996)	MOD	
		IEC 60598-2-11 (2005)		IEC 60598-2-11 (2005)	IDT	
		CNS 14115 (2004)		CISPR 15 (2000)	MOD	
		CNS 15663 (2013) Section 5 "Marking of Presence"		Nil	NEQ	
<b>Single-phase AC motors</b> (inspection scope: Inspection scope exclusive of those with attached devices, used as household appliances, or explosion-proof motors)	ditto	CNS 1057 (2001) or	√	Nil	NEQ	
		CNS 3618 (1992)		Nil	NEQ	
		CNS 15663 (2013) Section 5 "Marking of Presence"		Nil	NEQ	
<b>Low voltage three-phase induction motors</b> (inspection scope: Only the rated output power under 74.6kw(100HP) and exclusive of those with attached devices, used as household appliances, or	ditto	CNS 14400 (2012): Low-voltage three-phase squirrel-cage induction motors(for general use)	√	Nil	NEQ	
		CNS 1056 (2011): Other low-voltage three-phase induction motors (for class-A		Nil	NEQ	

Product	Regulations	Standards			
		Domestic Standards	Please tick box if mandatory	Relevant International Standards	Extent of Alignment
explosion-proof motors)		insulation)		Nil	NEQ
		CNS 15663 (2013) Section 5 "Marking of Presence"			

## 2.2. Electronics/IT products

Product	Regulations	Standards			
		Domestic Standards	Please tick box if mandatory	Relevant International Standards	Extent of Alignment
<b>Printing or copying machines</b> (including those with facsimile or scanning function, and for printing labels, barcodes, receipts, numbers, photographs, and bankbooks)	Commodity Inspection Act	CNS 13438 (2006)	√	CISPR 22	IDT
		CNS 14336-1 (2010)		IEC 60950	MOD
		Section 5 "Marking of presence" of CNS 15663 (2013)		Nil	NEQ
<b>Automatic data processing machines</b>	ditto	CNS 13438 (2006)	√	CISPR 22	IDT
		CNS 14336-1 (2010)		IEC 60950	MOD
		Section 5 "Marking of presence" of CNS 15663 (2013)		Nil	NEQ



Product	Regulations	Standards			
		Domestic Standards	Please tick box if mandatory	Relevant International Standards	Extent of Alignment
Radio Keyboard	ditto	CNS 13438 (2006)	√	CISPR 22	IDT
		CNS 14336-1 (2010)		IEC 60950	MOD
		Section 5 "Marking of presence" of CNS 15663 (2013)		Nil	NEQ
Image scanners	ditto	CNS 13438 (2006)	√	CISPR 22	IDT
		CNS 14336-1 (2010)		IEC 60950	MOD
		Section 5 "Marking of presence" of CNS 15663 (2013)		Nil	NEQ
Radio Mouse	ditto	CNS 13438 (2006)	√	CISPR 22	IDT
		CNS 14336-1 (2010)		IEC 60950	MOD
		Section 5 "Marking of presence" of CNS 15663 (2013)		Nil	NEQ
Other input or output units, whether or not presented with the rest of a system and whether or not containing storage units in the same housing	ditto	CNS 13438 (2006)	√	CISPR 22	IDT
		CNS 14336-1 (2010)		IEC 60950	MOD
		Section 5 "Marking of presence" of CNS 15663 (2013)		Nil	NEQ

Product	Regulations	Standards			
		Domestic Standards	Please tick box if mandatory	Relevant International Standards	Extent of Alignment
Automatic teller machines	ditto	CNS 13438 (2006)	√	CISPR 22	IDT
		CNS 14336-1 (2010)		IEC 60950	MOD
		Section 5 "Marking of presence" of CNS 15663 (2013)		Nil	NEQ
Other office machines of heading 84.72 (inspection scope: only Single phase AC, below 300V; not exceeding 500W; only document shredding machine)	ditto	CNS 13783-1 (2004)	√	CISPR 14-1	IDT
		CNS 14336-1 (2010)		IEC 60950	MOD
		Section 5 "Marking of presence" of CNS 15663 (2013)		Nil	NEQ
Other office machines of heading 84.72 (inspection scope: only DC, below 300V; not exceeding 500W; only document shredding machine)	ditto	CNS 13783-1 (2004)	√	CISPR 14-1	IDT
		Section 5 "Marking of presence" of CNS 15663 (2013)		Nil	NEQ
Static converters for automatic data processing machines and units thereof, and telecommunication apparatus (inspection	ditto	CNS 13438 (2006)	√	CISPR 22	IDT
		CNS 14336-1 (2010) or CNS 14408 (2003)		IEC 60950 IEC 60065	MOD MOD
		Section 5 "Marking of presence" of CNS 15663		Nil	NEQ

Product	Regulations	Standards			
		Domestic Standards	Please tick box if mandatory	Relevant International Standards	Extent of Alignment
scope: only adapters convertible from AC to DC)		(2013)			
<b>Static converters for automatic data processing machines and units thereof, and telecommunication apparatus</b> (inspection scope: chargers for electrical motorcycles)	ditto	CNS 15425-1 (2015)	√	Nil	NEQ
		CNS 13438 (2006)		CISPR 22	IDT
		Section 5 "Marking of presence" of CNS 15663 (2013)		Nil	NEQ
<b>Secondary lithium mobile power bank for computer, communication and consumer electronics</b>	ditto	CNS 15364 (2013)	√	IEC 62133	MOD
		CNS 14336-1 (2010)		IEC 60950	MOD
		CNS 13438 (2006)		CISPR 22	IDT
<b>Battery charger for computer, communication and consumer electronics</b> (inspection scope: only chargers convertible from AC to DC)	ditto	1. CNS 13438 (2006) and CNS 14336-1 (2010) or CNS 14408 (2003); or 2. CNS 13783-1 (2013) and CNS 60335-1 (2014) and CNS 60335-2-9 (2016)	√	CISPR 22 IEC 60950 IEC 60065 CISPR 14-1 IEC 60335-1 IEC 60335-2-29	IDT MOD MOD IDT MOD MOD
		Section 5 "Marking of presence" of CNS 15663 (2013)		Nil	NEQ
<b>Other power supply,</b>	ditto	CNS 13438 (2006)	√	CISPR 22	IDT

Product	Regulations	Standards			
		Domestic Standards	Please tick box if mandatory	Relevant International Standards	Extent of Alignment
<b>exchangeable type</b> (inspection scope: only adapters convertible from AC to DC)		CNS 14336-1 (2010) or CNS 14408 (2003)	√	IEC 60950 IEC 60065	MOD MOD
		Section 5 "Marking of presence" of CNS 15663 (2013)	√	Nil	NEQ
<b>Other power supply, exchangeable type</b> (inspection scope: chargers for electrical motorcycles)	ditto	CNS 15425-1 (2015)	√	Nil	NEQ
		CNS 13438 (2006)		CISPR 22	IDT
		Section 5 "Marking of presence" of CNS 15663 (2013)		Nil	NEQ
<b>Other uninterruptible power supply, having a power handling capacity not exceeding 10KVA</b>	ditto	CNS 14757-2 (2010)	√	IEC 62040-2	IDT
		CNS 14843-1 (2004) or CNS 14843-2 (2004)		IEC 62040-1-1 or IEC 62040-1-2	MOD MOD
		Section 5 "Marking of presence" of CNS 15663 (2013)		Nil	NEQ
<b>Other uninterruptible power supply</b>	ditto	CNS 14757-2 (2010)	√	IEC 62040-2	IDT

Product	Regulations	Standards			
		Domestic Standards	Please tick box if mandatory	Relevant International Standards	Extent of Alignment
		CNS 14843-1 (2004) or CNS 14843-2 (2004)		IEC 62040-1-1 or IEC 62040-1-2	MOD  MOD
		Section 5 "Marking of presence" of CNS 15663 (2013)		Nil	NEQ
<b>Other power supply</b> (inspection scope: only chargers for electrical motorcycles)	ditto	CNS 15425-1 (2015)	√	Nil	NEQ
		CNS 13438 (2006)		CISPR 22	IDT
		Section 5 "Marking of presence" of CNS 15663 (2013)		Nil	NEQ
<b>Other static converter</b> (inspection scope: only adapters convertible from AC to DC)	ditto	IEC 61558-1 (2009)	√	IEC 61558-1 (2009)	IDT
		Section 5 "Marking of presence" of CNS 15663 (2013)		Nil	NEQ
<b>Other static converter</b> (inspection scope: chargers for electrical motorcycles)	ditto	CNS 15425-1 (2015)	√	Nil	NEQ
		CNS 13438 (2006)		CISPR 22	IDT
		Section 5 "Marking of presence" of CNS 15663 (2013)		Nil	NEQ

Product	Regulations	Standards			
		Domestic Standards	Please tick box if mandatory	Relevant International Standards	Extent of Alignment
<b>Lithium-ion accumulators</b> (inspection scope: only Secondary lithium batteries for electrical motorcycles use)	ditto	CNS 15424-1 (2015)	√	Nil	NEQ
		CNS 15424-2 (2015)		Nil	NEQ
		CNS 15387 (2015)		Nil	NEQ
<b>Secondary lithium cells and batteries for computer, communication and consumer electronics except button type</b>	ditto	CNS 15364 (2013)	√	IEC 62133	MOD
<b>Lithium accumulators</b> (inspection scope: only Secondary lithium batteries for electrical motorcycles use)	ditto	CNS 15424-1 (2015)	√	Nil	NEQ
		CNS 15424-2 (2015)		Nil	NEQ
		CNS 15387 (2015)		Nil	NEQ
<b>Other accumulators</b> (inspection scope: only Secondary lithium batteries for electrical motorcycles use)	ditto	CNS 15424-1 (2015)	√	Nil	NEQ
		CNS 15424-2 (2015)		Nil	NEQ
		CNS 15387 (2015)		Nil	NEQ
<b>Single loudspeakers, mounted in their enclosures</b> (inspection scope: with built-in amplifier,	ditto	CNS 14408 (2004)	√	IEC 60065	MOD
		CNS13439 (2004)		CISPR 13	IDT

Product	Regulations	Standards			
		Domestic Standards	Please tick box if mandatory	Relevant International Standards	Extent of Alignment
excluding those only using DC power and HI-END audio)		Section 5 "Marking of presence" of CNS 15663 (2013)		Nil	NEQ
<b>Single loudspeakers, mounted in their enclosures</b> (inspection scope: with built-in amplifier, DC power only)	ditto	CNS13439 (2004)	√	CISPR 13	IDT
		Section 5 "Marking of presence" of CNS 15663 (2013)		Nil	NEQ
<b>Single loudspeakers, mounted in their enclosures</b> (inspection scope: with built-in amplifier, excluding those only using DC power and HI-END audio)	ditto	CNS 14408 (2004)	√	IEC 60065	MOD
		CNS13439 (2004)		CISPR 13	IDT
		Section 5 "Marking of presence" of CNS 15663 (2013)		Nil	NEQ
<b>Multiple loudspeakers, mounted in their enclosures</b> (inspection scope: with built-in amplifier, those only DC power)	ditto	CNS13439 (2004)	√	CISPR 13	IDT
		Section 5 "Marking of presence" of CNS 15663 (2013)		Nil	NEQ
<b>Other audio-frequency electric amplifier</b> (inspection scope: excluding those using HI-END audio)	ditto	CNS 14408 (2004)	√	IEC 60065	MOD
		CNS13439 (2004)		CISPR 13	IDT
		Section 5 "Marking of presence" of CNS 15663 (2013)		Nil	NEQ
<b>Other electric sound</b>	ditto	CNS 14408 (2004)	√	IEC 60065	MOD

Product	Regulations	Standards			
		Domestic Standards	Please tick box if mandatory	Relevant International Standards	Extent of Alignment
<b>amplifier sets</b> (inspection scope: excluding those only using DC power and HI-END audio)		CNS13439 (2004)		CISPR 13	IDT
		Section 5 "Marking of presence" of CNS 15663 (2013)		Nil	NEQ
<b>Other electric sound amplifier sets</b> (inspection scope: those only DC power)	ditto	CNS13439 (2004)	√	CISPR 13	IDT
		Section 5 "Marking of presence" of CNS 15663 (2013)		Nil	NEQ
<b>Record-players operated by coins, banknotes, bank cards, tokens or by other means of payment</b> (inspection scope: excluding those only DC power)	ditto	CNS 14408 (2004)	√	IEC 60065	MOD
		CNS13439 (2004)		CISPR 13	IDT
		Section 5 "Marking of presence" of CNS 15663 (2013)		Nil	NEQ
<b>Record-players operated by coins, banknotes, bank cards, tokens or by other means of payment</b> (inspection scope: those only DC power)	ditto	CNS13439 (2004)	√	CISPR 13	IDT
		Section 5 "Marking of presence" of CNS 15663 (2013)		Nil	NEQ
<b>Magnetic audio disc player operated by coins,</b>	ditto	CNS 14408 (2004)	√	IEC 60065	MOD
		CNS13439 (2004)		CISPR 13	IDT



Product	Regulations	Standards			
		Domestic Standards	Please tick box if mandatory	Relevant International Standards	Extent of Alignment
<b>banknotes, bank cards, tokens or by other means of payment</b> (inspection scope: excluding those only DC power or HI-END audio)		Section 5 "Marking of presence" of CNS 15663 (2013)		Nil	NEQ
<b>Magnetic audio disc player operated by coins, banknotes, bank cards, tokens or by other means of payment</b> (inspection scope: those only DC power)	ditto	CNS13439 (2004)	√	CISPR 13	IDT
		Section 5 "Marking of presence" of CNS 15663 (2013)		Nil	NEQ
<b>Other sound recording or reproducing apparatus operated by coins, banknotes, bank cards, tokens or by other means of payment</b> (inspection scope: excluding those only both DC power and HI-END audio)	ditto	CNS 14408 (2004)	√	IEC 60065	MOD
		CNS13439 (2004)		CISPR 13	IDT
		Section 5 "Marking of presence" of CNS 15663 (2013)		Nil	NEQ
<b>Other sound recording or reproducing apparatus operated by coins, banknotes, bank cards, tokens or by other means of payment</b> (inspection scope: those only DC power)	ditto	CNS13439 (2004)	√	CISPR 13	IDT
		Section 5 "Marking of presence" of CNS 15663 (2013)		Nil	NEQ

Product	Regulations	Standards			
		Domestic Standards	Please tick box if mandatory	Relevant International Standards	Extent of Alignment
<b>Sound recording or reproducing apparatus for using magnetic, optical or semiconductor media</b> (inspection scope: excluding those only both DC power and HI-END audio)	ditto	CNS 14408 (2004)	√	IEC 60065	MOD
		CNS13439 (2004)		CISPR 13	IDT
		Section 5 "Marking of presence" of CNS 15663 (2013)		Nil	NEQ
<b>Sound recording or reproducing apparatus for using magnetic, optical or semiconductor media</b> (inspection scope: those only DC power)	ditto	CNS13439 (2004)	√	CISPR 13	IDT
		Section 5 "Marking of presence" of CNS 15663 (2013)		Nil	NEQ
<b>Other sound recording or reproducing apparatus</b> (inspection scope: excluding those only both DC power and HI-END audio)	ditto	CNS 14408 (2004)	√	IEC 60065	MOD
		CNS13439 (2004)		CISPR 13	IDT
		Section 5 "Marking of presence" of CNS 15663 (2013)		Nil	NEQ
<b>Other sound recording or reproducing apparatus</b> (inspection scope: those only DC power)	ditto	CNS13439 (2004)	√	CISPR 13	IDT
		Section 5 "Marking of presence" of CNS 15663 (2013)		Nil	NEQ
<b>Laser-optical video disc players</b> (inspection scope: excluding those only DC	ditto	CNS 13439 (2004) (Multimedia products may choose CNS 13438 (2006))	√	CISPR 13	IDT

Product	Regulations	Standards			
		Domestic Standards	Please tick box if mandatory	Relevant International Standards	Extent of Alignment
power)		CNS 14408 (2004) (Multimedia products may choose CNS 14336-1 (2010))		IEC 60065	MOD
		Section 5 "Marking of presence" of CNS 15663 (2013)		Nil	NEQ
<b>Laser-optical video disc players</b> (inspection scope: only use DC power and contain display)	ditto	CNS 13439 (2004) (Multimedia products may choose CNS 13438 (2006))	√	CISPR 13	IDT
		CNS 14408 (2004) (Multimedia products may choose CNS 14336-1 (2010))		IEC 60065	MOD
		Section 5 "Marking of presence" of CNS 15663 (2013)		Nil	NEQ
<b>Laser-optical video disc players</b> (inspection scope: only use DC power but not contain display)	ditto	CNS 13439 (2004) (Multimedia products may choose CNS 13438 (2006))	√	CISPR 13	IDT
		CNS 14408 (2004) (Multimedia products may choose CNS 14336-1 (2010))		IEC 60065	MOD
		Section 5 "Marking of presence" of CNS 15663 (2013)		Nil	NEQ
<b>Digital record hard disk</b>	ditto	CNS 13439 (2004) (Multimedia products may choose CNS	√	CISPR 13	IDT

Product	Regulations	Standards			
		Domestic Standards	Please tick box if mandatory	Relevant International Standards	Extent of Alignment
type video recorder/player or video player, with BNC connector which can connect out with RS 232, RS422 or GPI interface		13438 (2006))		IEC 60065	MOD
		CNS 14408 (2004) (Multimedia products may choose CNS 14336-1 (2010))			
		Section 5 "Marking of presence" of CNS 15663 (2013)			
Other video recording or reproducing apparatus	ditto	CNS 13439 (2004) (Multimedia products may choose CNS 13438 (2006))	√	CISPR 13	IDT
		CNS 14408 (2004) (Multimedia products may choose CNS 14336-1 (2010))		IEC 60065	MOD
		Section 5 "Marking of presence" of CNS 15663 (2013)		Nil	NEQ
Radio navigational aid apparatus (inspection scope: those only vehicle Global Positioning System (GPS) receivers or handheld GPS receivers)	ditto	CNS 13439 (2004) (Multimedia products may choose CNS 13438 (2006))	√	CISPR 13	IDT
		CNS 14408 (2004) (Multimedia products may choose CNS 14336-1 (2010))		IEC 60065	MOD
		Section 5 "Marking of presence" of CNS 15663 (2013)		Nil	NEQ

Product	Regulations	Standards			
		Domestic Standards	Please tick box if mandatory	Relevant International Standards	Extent of Alignment
Other radio-broadcast receivers capable of operating without an external source of power, combines with sound recording or reproducing apparatus	ditto	CNS13439 (2004)	√	CISPR 13	IDT
		Section 5 "Marking of presence" of CNS 15663 (2013)		Nil	NEQ
Radio-broadcast receivers capable of operating without an external source of power, not combined with sound recording or reproducing apparatus	ditto	CNS13439 (2004)	√	CISPR 13	IDT
		Section 5 "Marking of presence" of CNS 15663 (2013)		Nil	NEQ
Radio-broadcast receivers not capable of operating without an external source of power, of a kind used in motor vehicles, combined with sound recording or reproducing apparatus capable of receiving and decoding digital radio data system signals	ditto	CNS13439 (2004)	√	CISPR 13	IDT
		Section 5 "Marking of presence" of CNS 15663 (2013)		Nil	NEQ
Other radio-broadcast receivers not capable of operating without an	ditto	CNS13439 (2004)	√	CISPR 13	IDT
		Section 5 "Marking of presence" of CNS 15663		Nil	NEQ

Product	Regulations	Standards			
		Domestic Standards	Please tick box if mandatory	Relevant International Standards	Extent of Alignment
external source of power, of a kind used in motor vehicles, combined with sound recording or reproducing apparatus		(2013)			
Radio-broadcast receivers not capable of operating without an external source of power, of a kind used in motor vehicles, not combined with sound recording or reproducing apparatus	ditto	CNS13439 (2004)	√	CISPR 13	IDT
		Section 5 "Marking of presence" of CNS 15663 (2013)		Nil	NEQ
Other radio-broadcast receivers combined with sound recording or reproducing apparatus (inspection scope: excluding those only both DC power and HI-END audio)	ditto	CNS 14408 (2004)	√	IEC 60065	MOD
		CNS13439 (2004)		CISPR 13	IDT
		Section 5 "Marking of presence" of CNS 15663 (2013)		Nil	NEQ
Other radio-broadcast receivers combined with sound recording or reproducing apparatus (inspection scope: those only DC power)	ditto	CNS13439 (2004)	√	CISPR 13	IDT
		Section 5 "Marking of presence" of CNS 15663 (2013)		Nil	NEQ
Other radio-broadcast	ditto	CNS 14408 (2004)	√	IEC 60065	MOD

Product	Regulations	Standards			
		Domestic Standards	Please tick box if mandatory	Relevant International Standards	Extent of Alignment
receivers, not combined with sound recording or reproducing apparatus but combined with a clock (inspection scope: excluding those only DC power)		CNS13439 (2004)		CISPR 13	IDT
		Section 5 "Marking of presence" of CNS 15663 (2013)		Nil	NEQ
Other radio-broadcast receivers, not combined with sound recording or reproducing apparatus but combined with a clock (inspection scope: those only DC power)	ditto	CNS13439 (2004)	√	CISPR 13	IDT
		Section 5 "Marking of presence" of CNS 15663 (2013)		Nil	NEQ
Other radio-broadcast receivers (inspection scope: excluding those only both DC power and HI-END audio)	ditto	CNS 14408 (2004)	√	IEC 60065	MOD
		CNS13439 (2004)		CISPR 13	IDT
		Section 5 "Marking of presence" of CNS 15663 (2013)		Nil	NEQ
Other radio-broadcast receivers (inspection scope: those only DC power)	ditto	CNS13439 (2004)	√	CISPR 13	IDT
		Section 5 "Marking of presence" of CNS 15663 (2013)		Nil	NEQ
Monitors for automatic data processing system	ditto	CNS 13438 (2006)	√	CISPR 22	IDT
		CNS 14336-1 (2010)		IEC 60950	MOD
		Section 5 "Marking of presence" of CNS 15663		Nil	NEQ

Product	Regulations	Standards			
		Domestic Standards	Please tick box if mandatory	Relevant International Standards	Extent of Alignment
		(2013)			
<b>Monitors</b>	ditto	CNS 13439 (2004) (Multimedia products may choose CNS 13438 (2006))	√	CISPR 13	IDT
		CNS 14408 (2004) (Multimedia products may choose CNS 14336-1 (2010))		IEC 60065	MOD
		Section 5 "Marking of presence" of CNS 15663 (2013)		Nil	NEQ
		Section 5 "Marking of presence" of CNS 15663 (2013)		Nil	NEQ
<b>Projectors</b>	ditto	CNS 13439 (2004) (Multimedia products may choose CNS 13438 (2006))	√	CISPR 13	IDT
		CNS 14408 (2004) (Multimedia products may choose CNS 14336-1 (2010))		IEC 60065	MOD
		Section 5 "Marking of presence" of CNS 15663 (2013)		Nil	NEQ
<b>Video tuners</b> (inspection scope: having digital terrestrial television)	ditto	CNS 13439 (2004)	√	CISPR 13	IDT



Product	Regulations	Standards			
		Domestic Standards	Please tick box if mandatory	Relevant International Standards	Extent of Alignment
reception capability. excluding those for only vehicle use or computer use)		CNS 14408 (2004)		IEC 60065	MOD
		“Technical Specification for Digital Terrestrial Television Receivers”(Adopted on 29 August, 2011)		Nil	NEQ
		Section 5 “Marking of presence” of CNS 15663 (2013)		Nil	NEQ
<b>Network media players</b>	ditto	CNS 13439 (2004) (Multimedia products may choose CNS 13438 (2006))	√	CISPR 13	IDT
		CNS 14408 (2004) (Multimedia products may choose CNS 14336-1 (2010))		IEC 60065	MOD
		Section 5 “Marking of presence” of CNS 15663 (2013)		Nil	NEQ
<b>Set top boxes which have a communication function, with a</b>	ditto	CNS 13439 (2004)	√	CISPR 13	IDT

Product	Regulations	Standards			
		Domestic Standards	Please tick box if mandatory	Relevant International Standards	Extent of Alignment
<b>microprocessor-based device incorporating a built-in or external modem for gaining access to the Internet, and having a function of interactive information exchange and which also have a function to receive television signals</b> (inspection scope: having digital terrestrial television reception capability with external modem for gaining access to the Internet, excluding those for only Vehicle use or computer use)		CNS 14408 (2004)		IEC 60065	MOD
		“Technical Specification for Digital Terrestrial Television Receivers”(Adopted on 29 August, 2011)		Nil	NEQ
		Section 5 “Marking of presence” of CNS 15663 (2013)		Nil	NEQ
<b>Televisions</b>	ditto	CNS 13439 (2004) (Multimedia products may choose CNS 13438 (2006))	√	CISPR 13	IDT
		CNS 14408 (2004) (Multimedia products may choose CNS 14336-1 (2010))		IEC 60065	MOD
		Technical Specification for Digital Terrestrial Television Receivers (2011.8)		Nil	NEQ

Product	Regulations	Standards			
		Domestic Standards	Please tick box if mandatory	Relevant International Standards	Extent of Alignment
		Section 5 "Marking of presence" of CNS 15663 (2013)		Nil	NEQ
<b>Other electrical machines and apparatus</b> (inspection scope: Language learning machine, excluding those only DC power)	ditto	CNS 14408 (2004)	√	IEC 60065	MOD
		CNS 13439 (2004)		CISPR 13	IDT
		Section 5 "Marking of presence" of CNS 15663 (2013)		Nil	NEQ
<b>Drafting tables and machines fitted with data processing system, whether or not automatic</b>	ditto	CNS 13438 (2006)	√	CISPR 22	IDT
		CNS 14336-1 (2010)		IEC 60950	MOD
		Section 5 "Marking of presence" of CNS 15663 (2013)		Nil	NEQ
<b>Drafting machines for data processing system</b>	ditto	CNS 13438 (2006)	√	CISPR 22	IDT
		CNS 14336-1 (2010)		IEC 60950	MOD
		Section 5 "Marking of presence" of CNS 15663 (2013)		Nil	NEQ
<b>Pencil-sharpening machines</b> (inspection scope: only single phase not exceeding 300V, excluding rechargeable type)	ditto	CNS 14336-1 (2010)	√	IEC 60950	MOD
		CNS 13783-1 (2004)		CISPR14-1	IDT
		Section 5 "Marking of presence" of CNS 15663 (2013)		Nil	NEQ

### 3. Products covered by supplier declarations (DoC Scheme)

Product	Regulations	Standards			
		Domestic Standards	Please tick box if mandatory	Relevant International Standards	Extent of Alignment
<b>Word-processing machines</b>	Commodity Inspection Act	CNS 13438 (2006) CNS 14336-1 (2010) Section 5 "Marking of presence" of CNS 15663 (2013)	√	CISPR22 IEC 60950 Nil	IDT MOD NEQ
<b>Typewriters other than printers of heading 84.43</b>	ditto	CNS 13438 (2006) CNS 14336-1 (2010) Section 5 "Marking of presence" of CNS 15663 (2013)	√	CISPR22 IEC 60950 Nil	IDT MOD NEQ
<b>Other machines of heading No.84.70</b>	ditto	CNS 13438 (2006) CNS 14336-1 (2010) Section 5 "Marking of presence" of CNS 15663 (2013)	√	CISPR22 IEC 60950 Nil	IDT MOD NEQ
<b>Cash registers</b>	ditto	CNS 13438 (2006) CNS 14336-1 (2010) Section 5 "Marking of presence" of CNS 15663 (2013)	√	CISPR22 IEC 60950 Nil	IDT MOD NEQ
<b>Pocket-size data recording, reproducing and displaying machines with calculating functions</b> (inspection scope: those	ditto	CNS 13438 (2006) CNS 14336-1 (2010) Section 5 "Marking of presence" of CNS 15663	√	CISPR22 IEC 60950 Nil	IDT MOD NEQ

Product	Regulations	Standards			
		Domestic Standards	Please tick box if mandatory	Relevant International Standards	Extent of Alignment
only for power consumption more than 10nW)		(2013)			
<b>Electric calculators capable of operation without an external source of electric power</b> (inspection scope: those only for power consumption more than 10nW)	ditto	CNS13438 Section 5 "Marking of presence" of CNS 15663 (2013)	√	CISPR22 Nil	IDT NEQ
<b>Electronic calculating machines, incorporating a printing device</b>	ditto	CNS 13438 (2006) CNS 14336-1 (2010) Section 5 "Marking of presence" of CNS 15663 (2013)	√	CISPR22 IEC 60950 Nil	IDT MOD NEQ
<b>Other electronic calculating machines</b>	ditto	CNS 13438 (2006) CNS 14336-1 (2010) Section 5 "Marking of presence" of CNS 15663 (2013)	√	CISPR22 IEC 60950 Nil	IDT MOD NEQ
<b>Other calculating machines</b>	ditto	CNS 13438 (2006) CNS 14336-1 (2010) Section 5 "Marking of presence" of CNS 15663 (2013)	√	CISPR22 IEC 60950 Nil	IDT MOD NEQ
<b>Hard disc devices</b> (external type)	ditto	CNS 13438 (2006) CNS 14336-1 (2010) Section 5 "Marking of	√	CISPR22 IEC 60950 Nil	IDT MOD NEQ

Product	Regulations	Standards			
		Domestic Standards	Please tick box if mandatory	Relevant International Standards	Extent of Alignment
		presence" of CNS 15663 (2013)			
<b>Hard disc devices</b> ( internal type )	ditto	CNS13438 Section 5 "Marking of presence" of CNS 15663 (2013)	√	CISPR22 Nil	IDT NEQ
<b>Soft disc devices</b> (external type)	ditto	CNS 13438 (2006) CNS 14336-1 (2010) Section 5 "Marking of presence" of CNS 15663 (2013)	√	CISPR22 IEC 60950 Nil	IDT MOD NEQ
<b>Soft disc devices</b> ( internal type )	ditto	CNS13438 Section 5 "Marking of presence" of CNS 15663 (2013)	√	CISPR22 Nil	IDT NEQ
<b>Optical disc devices</b> (external type)	ditto	CNS 13438 (2006) CNS 14336-1 (2010) Section 5 "Marking of presence" of CNS 15663 (2013)	√	CISPR22 IEC 60950 Nil	IDT MOD NEQ
<b>Optical disc devices</b> ( internal type )	ditto	CNS13438 Section 5 "Marking of presence" of CNS 15663 (2013)	√	CISPR22 Nil	IDT NEQ
<b>Other magnetic disc devices</b> (external type)	ditto	CNS 13438 (2006) CNS 14336-1 (2010)	√	CISPR22 IEC 60950	IDT MOD

Product	Regulations	Standards			
		Domestic Standards	Please tick box if mandatory	Relevant International Standards	Extent of Alignment
		Section 5 "Marking of presence" of CNS 15663 (2013)		Nil	NEQ
<b>Other magnetic disc devices</b> ( internal type )	ditto	CNS13438 Section 5 "Marking of presence" of CNS 15663 (2013)	√	CISPR22 Nil	IDT NEQ
<b>Other storage units</b> (external type)	ditto	CNS 13438 (2006) CNS 14336-1 (2010) Section 5 "Marking of presence" of CNS 15663 (2013)	√	CISPR22 IEC 60950 Nil	IDT MOD NEQ
<b>Other storage units</b> ( internal type )	ditto	CNS13438 Section 5 "Marking of presence" of CNS 15663 (2013)	√	CISPR22 Nil	IDT NEQ
<b>Other units of automatic data processing machines</b>	ditto	CNS 13438 (2006) CNS 14336-1 (2010) Section 5 "Marking of presence" of CNS 15663 (2013)	√	CISPR22 IEC 60950 Nil	IDT MOD NEQ
<b>Data transcribing machines for inputting into data processing machines, such as card punch machines, verifying machines,</b>	ditto	CNS 13438 (2006) CNS 14336-1 (2010) Section 5 "Marking of presence" of CNS 15663 (2013)	√	CISPR22 IEC 60950 Nil	IDT MOD NEQ

Product	Regulations	Standards			
		Domestic Standards	Please tick box if mandatory	Relevant International Standards	Extent of Alignment
magnetic tape encoders, etc.					
<b>Parts and accessories of the machines of heading 84.71</b> (inspection scope: only limited to Class B main board of computers and add-on cards with I/O port; except for Fax Card, Modem card, Fax/ Modem Card and other add-on card with communication function)	ditto	CNS 13438 (2006) CNS 14336-1 (2010) Section 5 "Marking of presence" of CNS 15663 (2013)	√	CISPR22 IEC 60950 Nil	IDT MOD NEQ
<b>Digital still image video cameras and digital cameras, with radio function</b>	ditto	CNS13438 Section 5 "Marking of presence" of CNS 15663 (2013)	√	CISPR22 Nil	IDT NEQ
<b>Digital still image video cameras and digital cameras</b>	ditto	CNS13438 Section 5 "Marking of presence" of CNS 15663 (2013)	√	CISPR22 Nil	IDT NEQ
<b>video camera recorders, with radio function</b> (inspection scope: only digital video camera)	ditto	CNS13438 Section 5 "Marking of presence" of CNS 15663 (2013)	√	CISPR22 Nil	IDT NEQ
<b>Other video camera recorders</b> (inspection scope: only digital video camera)	ditto	CNS13438 Section 5 "Marking of presence" of CNS 15663 (2013)	√	CISPR22 Nil	IDT NEQ

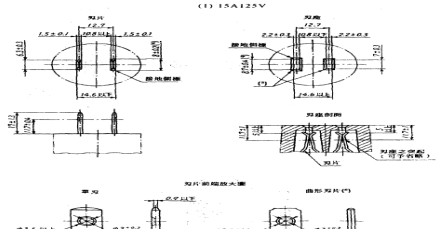


Product	Regulations	Standards			
		Domestic Standards	Please tick box if mandatory	Relevant International Standards	Extent of Alignment
<b>Machines for the reception, conversion and transmission or regeneration of voice, images or other data, including switching and routing apparatus</b> (inspection scope: only Router, Bridge, Switch, Hub)	ditto	CNS 13438 (2006) CNS 14336-1 (2010) Section 5 "Marking of presence" of CNS 15663 (2013)	√	CISPR22 IEC 60950 Nil	IDT MOD NEQ
<b>Other Keyboard</b>	ditto	CNS 13438 (2006) CNS 14336-1 (2010) Section 5 "Marking of presence" of CNS 15663 (2013)	√	CISPR22 IEC 60950 Nil	IDT MOD NEQ
<b>Magnetic or optical readers</b>	ditto	CNS 13438 (2006) CNS 14336-1 (2010) Section 5 "Marking of presence" of CNS 15663 (2013)	√	CISPR22 IEC 60950 Nil	IDT MOD NEQ
<b>Turntables (record-decks)</b> (inspection scope: excluding those only DC power or HI-END audio)	ditto	CNS13439 (2004) CNS 14408 (2004) Section 5 "Marking of presence" of CNS 15663 (2013)	√	CISPR 13 IEC 60065 Nil	IDT MOD NEQ
<b>Turntables (record-decks)</b> (inspection scope: those	ditto	CNS13439 (2004) Section 5 "Marking of	√	CISPR 13 Nil	IDT NEQ

Product	Regulations	Standards			
		Domestic Standards	Please tick box if mandatory	Relevant International Standards	Extent of Alignment
only DC power)		presence" of CNS 15663 (2013)			
<b>Magnetic tape-type video tape recorder/player, other than the articles of tariff no.85211011 for magnetic tapes of a width of 3/4 inch and over</b>	ditto	CNS13439 (2004) CNS 14408 (2004) Section 5 "Marking of presence" of CNS 15663 (2013)	√	CISPR 13 IEC 60065 Nil	IDT MOD NEQ
<b>Other magnetic tape-type video tape recorder/player</b>	ditto	CNS13439 (2004) CNS 14408 (2004) Section 5 "Marking of presence" of CNS 15663 (2013)	√	CISPR 13 IEC 60065 Nil	IDT MOD NEQ
<b>Magnetic tape-type video tape recorder/player, other than the articles of tariff no.85211021 for magnetic tapes of a width of 3/4 inch and over</b>	ditto	CNS13439 (2004) CNS 14408 (2004) Section 5 "Marking of presence" of CNS 15663 (2013)	√	CISPR 13 IEC 60065 Nil	IDT MOD NEQ
<b>Other magnetic tape-type video tape player</b>	ditto	CNS13439 (2004) CNS 14408 (2004) Section 5 "Marking of presence" of CNS 15663 (2013)	√	CISPR 13 IEC 60065 Nil	IDT MOD NEQ
<b>Pocket-size radio cassette-players</b>	ditto	CNS13439 (2004) Section 5 "Marking of presence" of CNS 15663	√	CISPR 13 Nil	IDT NEQ

Product	Regulations	Standards			
		Domestic Standards	Please tick box if mandatory	Relevant International Standards	Extent of Alignment
		(2013)			
Electrical machines with translation or dictionary functions	ditto	CNS 13438 (2006) CNS 14336-1 (2010) Section 5 "Marking of presence" of CNS 15663 (2013)	√	CISPR22 IEC 60950 Nil	IDT MOD NEQ
Other electrical machines and apparatus (inspection scope: those only DC power)	ditto	CNS13439 (2004) Section 5 "Marking of presence" of CNS 15663 (2013)	√	CISPR 13 Nil	IDT NEQ

### Mains Voltage, Frequency and Mains Plug Configuration

Economy	Mains Voltage and Tolerance	Mains Frequency and Tolerance	Applicable Legislation	Mains Plug Configuration				Diagram of Mains Plug Configuration-
				Domestic Standard	Please tick box if mandatory	Relevant International Standard	Extent of Alignment	
Chinese Taipei	110V	60Hz	Commodity Inspection Act 2007	CNS690	√	No	No	

	220V	60Hz	Commodity Inspection Act 2007	CNS690	√	No	No	