



**Asia-Pacific  
Economic Cooperation**

---

**2019/SOM3/SCCP/ACBD/005**

## **New Zealand's Experience with Prohibited Goods in the Postal Stream**

Submitted by: New Zealand



**APEC Customs Business Dialogue: Cross Border  
E-Commerce and Customs Regulatory Challenges  
Puerto Varas, Chile  
17 August 2019**

# New Zealand's experience with prohibited goods in the postal stream



August 2019



NEW ZEALAND  
**CUSTOMS SERVICE**  
TE MANA ĀRAI O AOTEAROA

Protecting  
New Zealand's  
Border

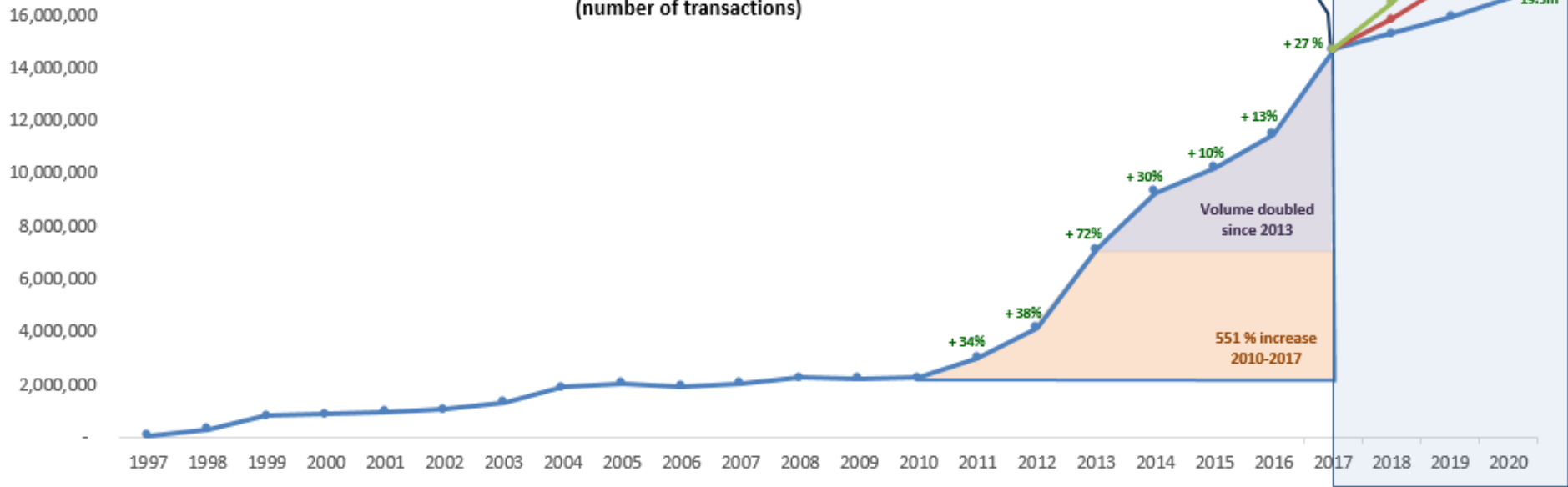
# Context

» Trade volumes are surging, driven by the growth of low-value consignments purchased online

» Consignments valued less than \$1,000 come with lower quality data, increasing their risk profile

## INCREASING VOLUMES

Imports under \$1,000 (ECI + SID + Postal Packets/Parcels)  
(number of transactions)

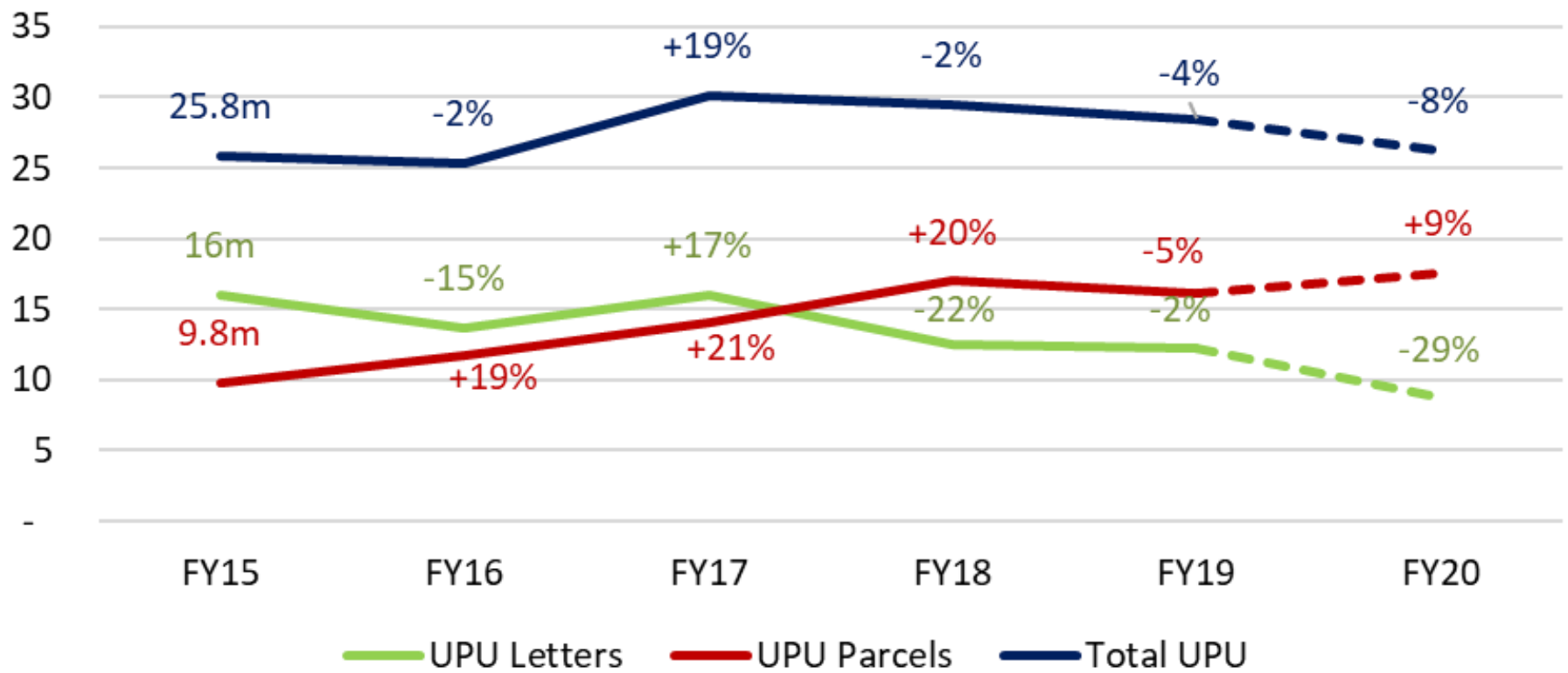


# Context

Parcels have overtaken letters in IMC volume; the gap is forecast to widen

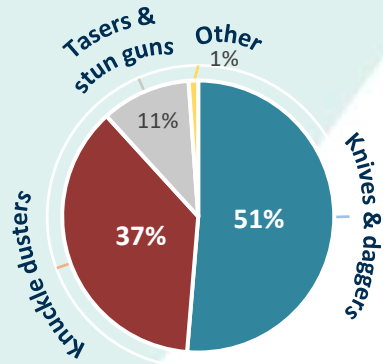
## Inbound IMC Volume Trends

Forecast (by NZ Post)

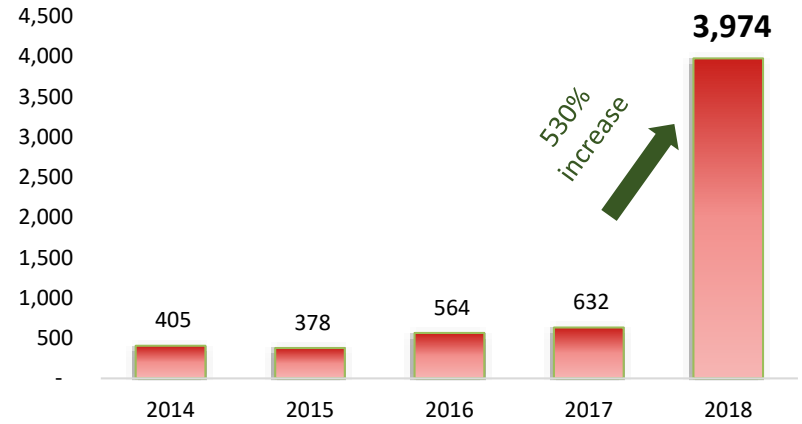




## Weapon Type, 2018

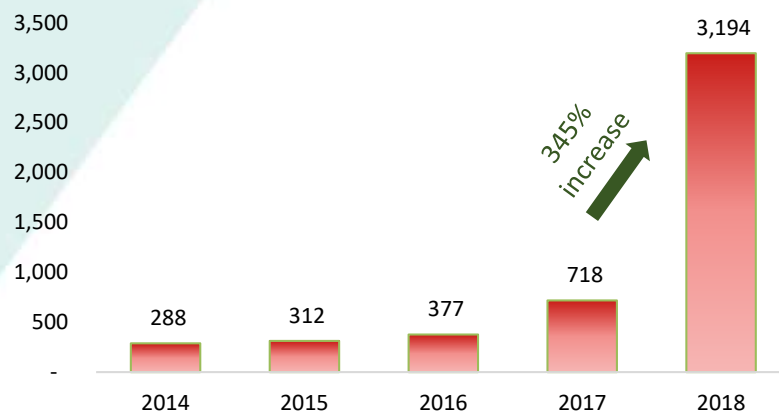


## Offensive weapons seizures at the IMC, 2014-18





Paraphernalia seizures at the IMC, 2014-18



**MDMA (ECSTACY) SEIZURES**

99% at IMC = 491 seizures

2,300 pills  
+  
13.5 kg

**CANNABIS SEEDS SEIZURES**

99% at IMC = 1,076 seizures

24,000 seeds  
+  
2 kg

**COCAINE SEIZURES**

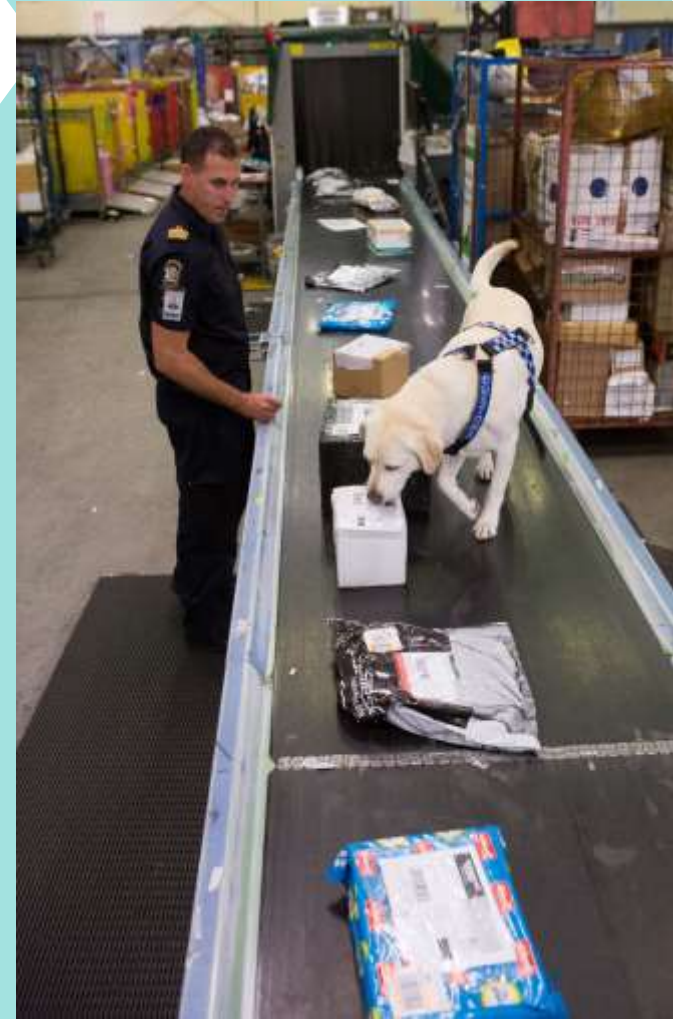
97% at IMC      6g per seizure (average)

70% of seizures were 4g or less

NOTE: Some seizure reports record weight as the unit of measurement; others use quantity

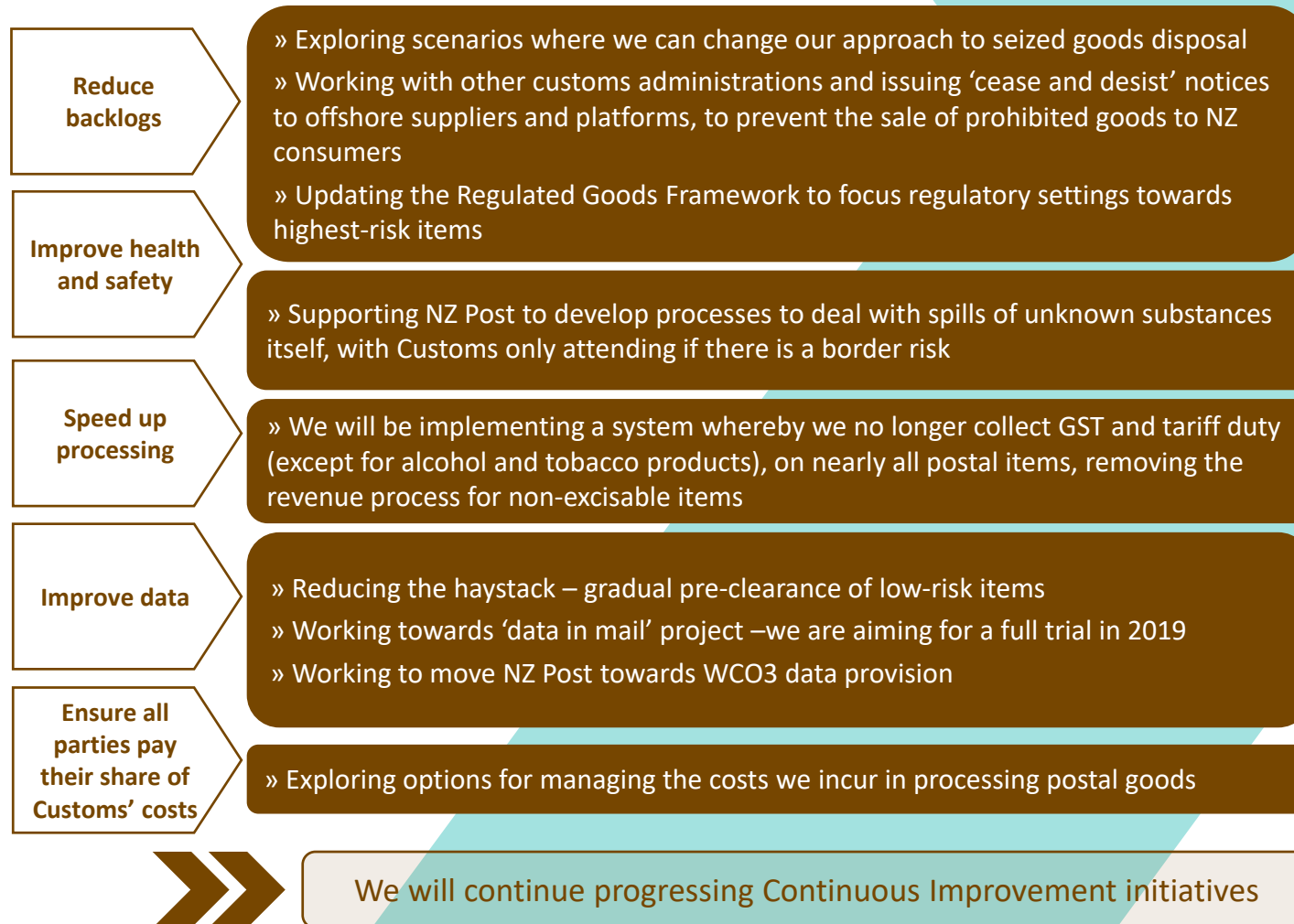
# Prohibited Goods

- Online spending in NZ is currently worth approximately NZ\$4.2 billion, a 10% increase from the same time last year.
- Customs currently has approximately 4200 items awaiting seizure at the IMC.
- The seizure of an item worth as little as NZ\$2 can cost Customs around NZ\$60 in administrative expenses.





# What we want to do and what we are doing domestically



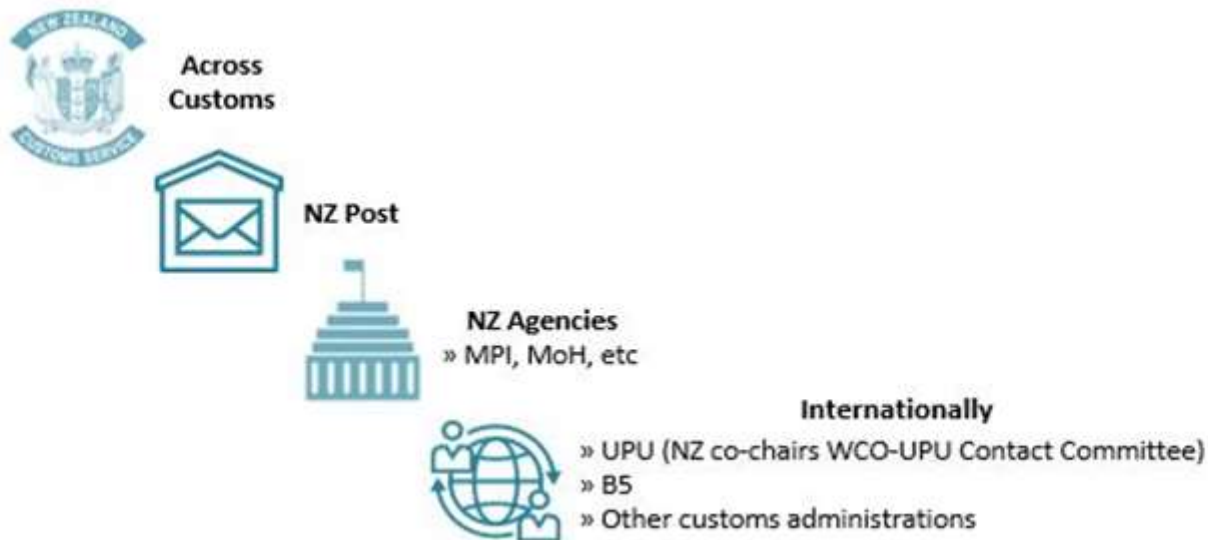


# What we are doing in the international context

WE ARE WORKING ACROSS SUPPLY CHAINS ...



... AND GOVERNANCE STRUCTURES



**Thank you!**  
**Muchas gracias!**



NEW ZEALAND  
**CUSTOMS SERVICE**  
TE MANA ĀRAI O AOTEAROA

Protecting  
New Zealand's  
Border