



**Asia-Pacific
Economic Cooperation**

2009/SCCP/SWWG/WKSP4/006

Customs in the 21st Century

Submitted by: WCO



**Single Window Working Group Capacity
Building Workshop 4
Singapore
6-8 April 2009**



Customs in the 21st Century

- Coordinated Border Management
 - Single Window
 - Capacity Building
- Globally Networked Customs

APEC SWWG April 2009
Gareth Lewis
World Customs Organization (WCO)

1



Mission Statement

“To enhance the effectiveness and efficiency of Customs Administrations”

Application of trade regulations

Protection of society

Collection of fiscal revenue

Economic and social well-being of nations.



Mission Statement

- **Enhance the effectiveness and efficiency of Customs administrations by;**
 - **Developing and maintaining standards for simple, standardised and harmonised Customs systems and procedures;**
 - **Assisting in capacity building programmes;**
 - **Providing training and technical assistance.**

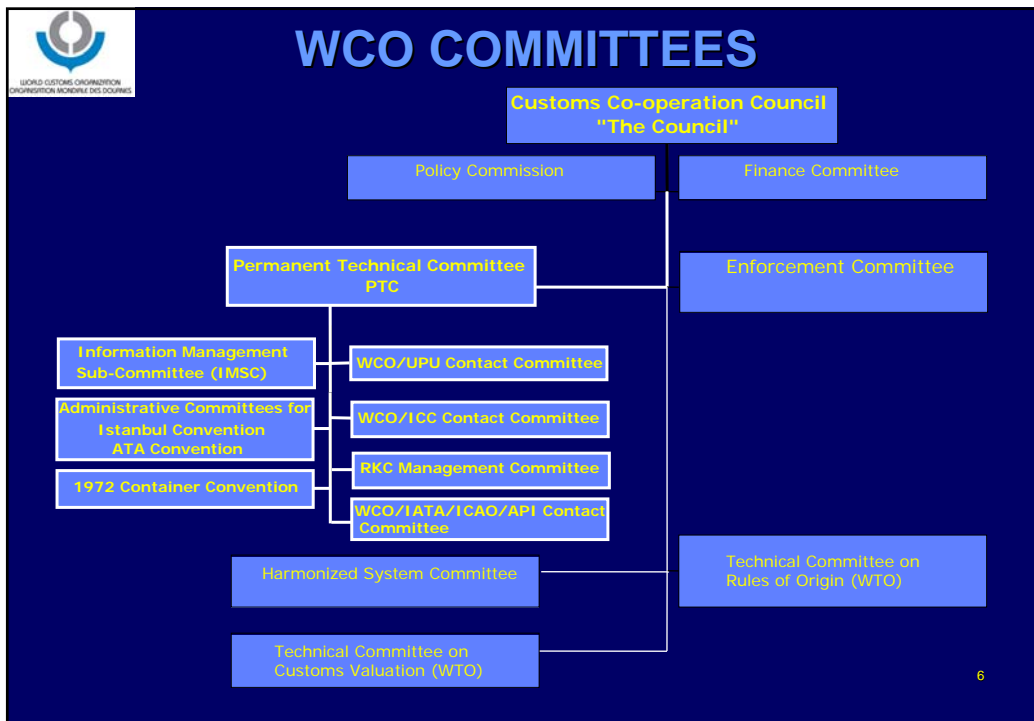
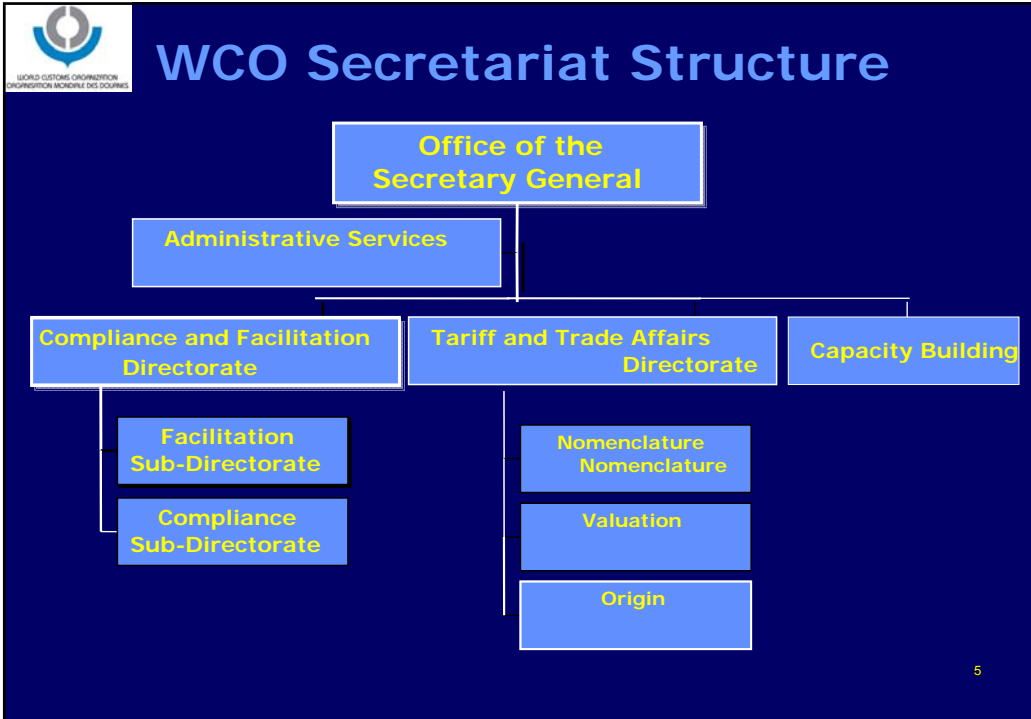
3

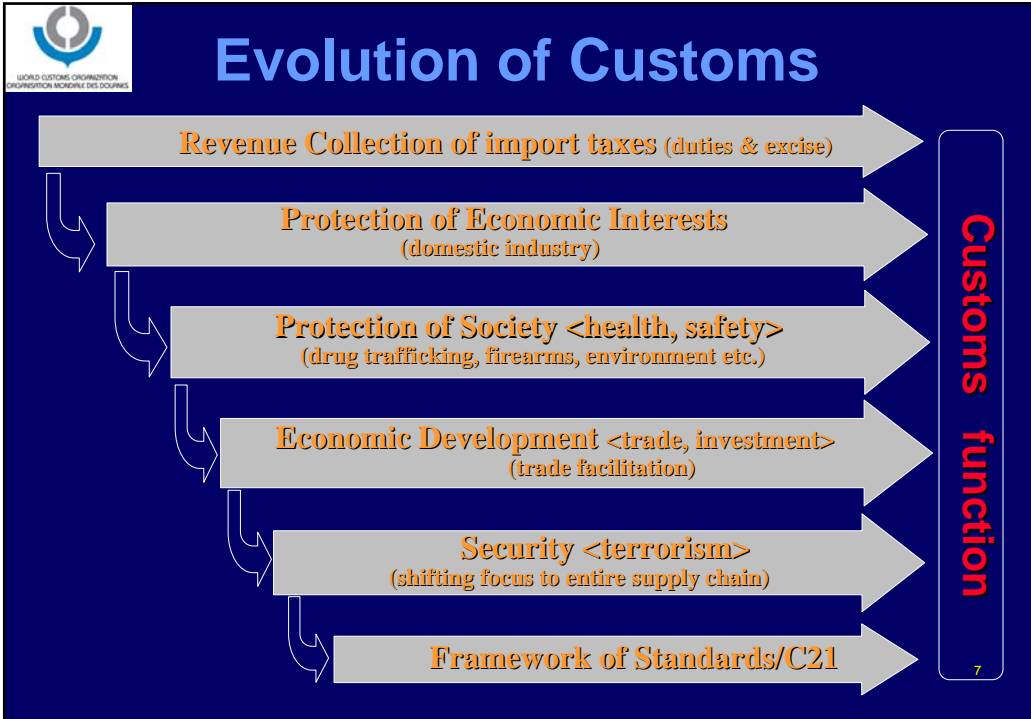


WCO Key Instruments

- **Revised Kyoto Convention**
- **'SAFE' Framework of standards**
- **WCO Customs Data Model &**
- **UCR**
- **Istanbul/ ATA Convention**
- **Time Release Study**
- **Harmonised System**
- **Integrated Supply Chain Management Guidelines**

4





-
- SAFE Framework Principles**
- ❑ Standards to Secure and Facilitate Global Trade
 - ❑ Pillar 1, Customs-to-Customs networking
 - ❑ Pillar 2, Customs-to-Business partnership (AEO)
 - ❑ (Proposed) Pillar 3, Customs-to-OGA partnership
 - Relationship to single window
 - ❑ Columbus Program (+ diagnostic studies)
 - Implications of 100% scanning in the US
 - ❑ Seal Integrity Program
 - ❑ Integrated Supply Chain Management Guidelines
 - Advance cargo information
 - Legally enabling environment
 - Use of UCR
- April 2009

C21: A New Strategic Direction



- **Approved as the future Customs roadmap**
- **From vision, aspiration to implementation**
- **10 building blocks for C21**
- **Priority BBs: Globally Networked Customs and Coordinated Border Management**
- **Future role of WCO: Standard setting; capacity building; monitor implementation; funding; research**

9

Customs in the 21st Century

- **Globally Networked Customs**
 - **1st building block of C21**
 - **provides the basis of the e-customs strategy**
 - **RKC Chapters 3, 6**
 - **SAFE Framework (1st Pillar)**
 - **Data/message standards, UCR**
 - **Focus on exports**
 - **Mutual Recognition/MAA (includes AEO)**
 - **Strongly related to JCC concept**

10



Customs in the 21st Century

- ❑ **Coordinated Border Management**
 - 2nd building block of C21
 - based on collaboration/cooperation
 - RKC Chapter 3, 7 + risk management
 - SAFE (security of supply chain)
 - Data/message standards, UCR
 - Mutual Recognition (includes AEO concept)
 - International Trade Single Window

11



C21 – 10 Building Blocks

- **BB3 – Intelligence-driven Risk Management**
 - Scarce resources need to be targeted at the higher end of continuum
 - Involves risk management at the operational and management levels

- **BB4 – Customs-Business Partnership**
 - Understand each other & produce mutually beneficial outcomes
 - Agreements between customs and trusted economic operators (AEO)

12



C21 – 10 Building Blocks

- **BB5 – Implementation of modern working methods, procedures and techniques**
- **BB6 – Enabling technologies and tools**
- **BB7 – Enabling (legal) powers**
- **BB8 – Professional, knowledge-based service culture**
- **BB9 – Capacity Building (More later)**
- **BB10 – Integrity**

13



WCO priorities – Capacity Building

- **Implementation of WCO standards**
- **Collaboration with donors & other stakeholders**
- **Regional approach**
- **Areas of capacity building**
 - **Trade security & facilitation**
 - **Revenue enhancement**
 - **Counterfeiting & piracy**
 - **Management issues, including integrity**

14



WCO Priorities – Research

- **Understand & manage the challenges**
 - **Expanded role**
 - **Coordination with other ministries**

- **Emerging issues**
 - **Environment protection – international customs day**
 - **Regional trade agreements etc.**

- **Customs in the 21st Century**

- **Research unit within the Secretariat**

15



Columbus: 21st Century WCO Capacity Building

- **Support worldwide adoption and implementation of the WCO SAFE Framework of Standards to Secure and Facilitate Global Trade**

- **Promote the WCO International Standards, as the Revised Kyoto Convention**

- **Support implementation of Trade Facilitation initiatives under negotiation at World Trade Organization**

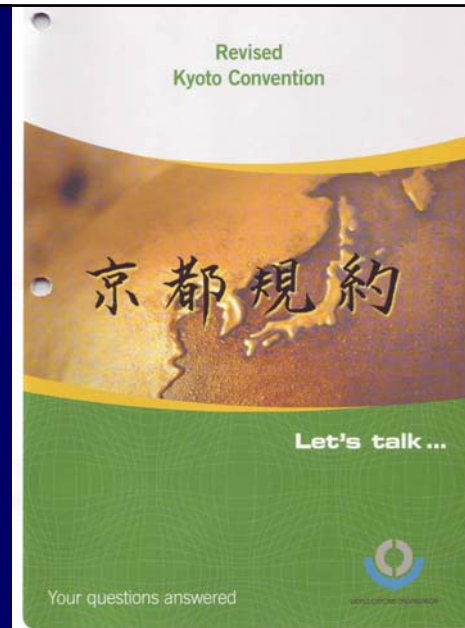
- **Building sustainable Capacity in Customs Administrations**

- **Co-operating with international Capacity Building partners**

16

Revised Kyoto Convention

(A Blueprint for Modern
Customs Administration)

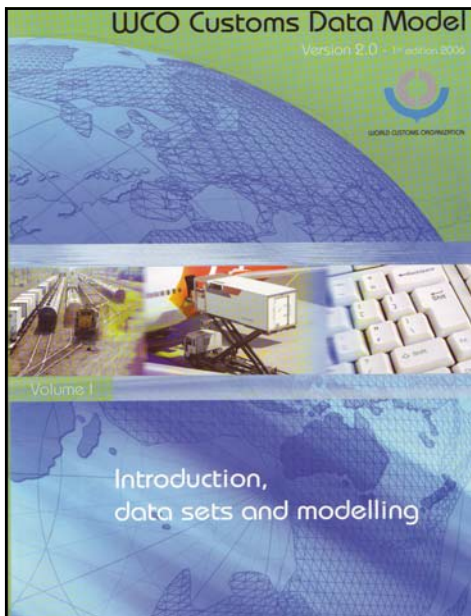


17

THE REVISED CONVENTION CHAPTERS OF THE GENERAL ANNEX

- 1 - General principles
- 2 - Definitions
- 3 - Clearance and other Customs formalities
- 4 - Duties and taxes
- 5 - Security
- 6 - Customs control
- 7 - Application of information technology
- 8 - Relationship between the Customs and third parties
- 9 - Information, decisions and rulings supplied by the Customs
- 10 - Appeals in Customs matters

18

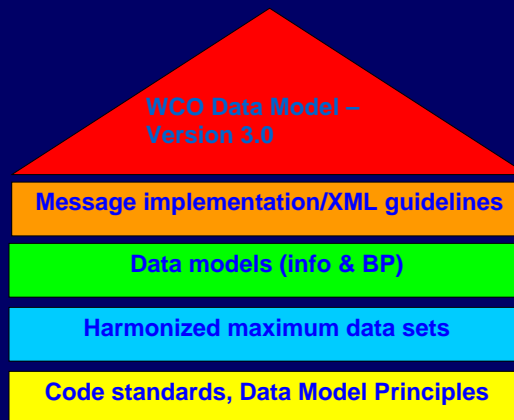


WCO Data Model (Version 3.0 and Single Window)

19



WCO Data Model Building Blocks

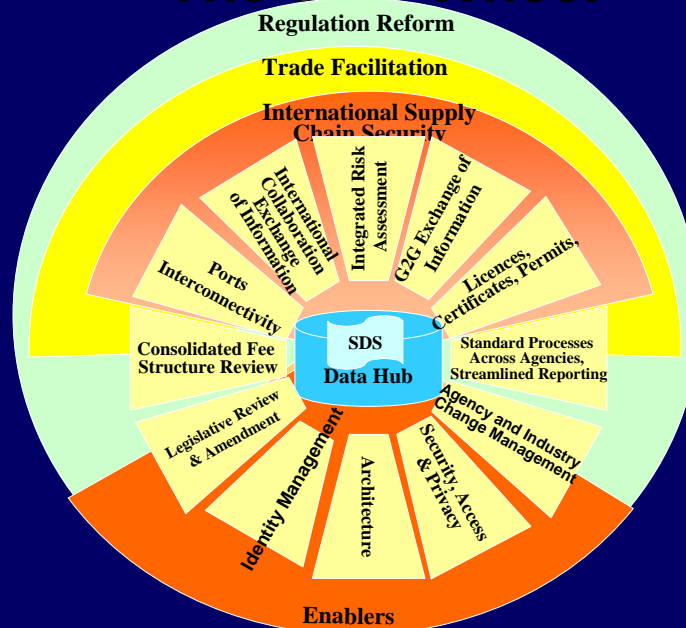


20

Single Window to Government

- ❑ The Single Window environment is a complex technical issue, but it cannot work without the political, administrative, policy and legal issues being examined first.
- ❑ Be sure to get the policy, legal and administrative frameworks analysed and sorted before looking at technical options.

The SW “Wheel”





Gareth Lewis
+32 2209 9355
gareth.lewis@wcoomd.org

For more information:

www.wcoomd.org

« Copyright © 2009 World Customs Organization. All rights reserved. Requests and inquiries concerning translation, reproduction and adaptation rights should be addressed to copyright@wcoomd.org ».