



**Asia-Pacific  
Economic Cooperation**

---

**2011/EPWG/WKSP/012**  
Session 2

## **TSMC's Business Continuity Management (BCM) Introduction**

Submitted by: TSMC



**Workshop on Private Sector Emergency  
Preparedness  
Sendai, Japan  
1-3 August 2011**



Security C –  
TSMC Secret

# TSMC's BCM Introduction

Paul B.C.Chen

Risk Management  
TSMC  
Chinese Taipei

1

© 2009 TSMC, Ltd.

Open Innovation Platform™



Security C –  
TSMC Secret

## Outline

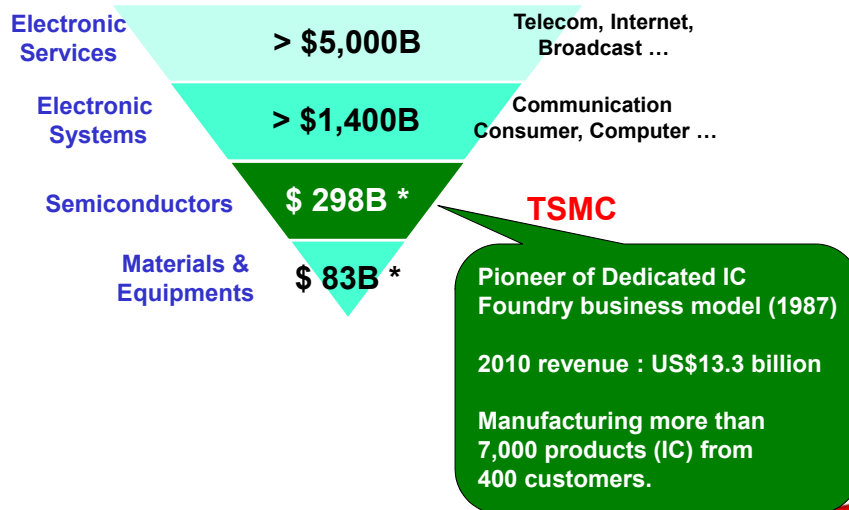
- Supply Chain Overview
- TSMC's BCM Introduction
- BCP Examples

2

© 2009 TSMC, Ltd.

Open Innovation Platform™

## Supply Chain Overview : From Electronic Service , System to Semiconductor



\* Data from SEMI report 2010.

Empowering Innovation

## TSMC's Risk Management



- Enterprise Risk Management (ERM):
  - TSMC established its Enterprise Risk Management (ERM) program based on both its corporate vision and its long-term sustainability and responsibility to both industry and society. ERM seeks to provide for TSMC's adequate management of risks on behalf of all stakeholders.
- ERM Strategy:
  - Risk avoidance, risk transfer, risk mitigation and risk reductions are means to reduce corporate risks.
  - TSMC Business Continuity Management (BCM) is established to maintain wafer production or services delivery when a catastrophic incident occurs.

4

© 2009 TSMC, Ltd.

Open Innovation Platform™

# TSMC's BCM Introduction



## Objective

- BCM includes guidelines and procedures to be applied by companywide emergency and nature disasters through risk control, emergency response, crisis management and business continuity

## Scope

- Potential accidents or incidents which could cause significant production losses to the company, such as fire, chemical/gas leakage, earthquake, flood, incoming utility supply shortage, process excursion, product contamination, supply interruption, strike, sabotage, pandemic and IT unavailable, etc..

## Strategy

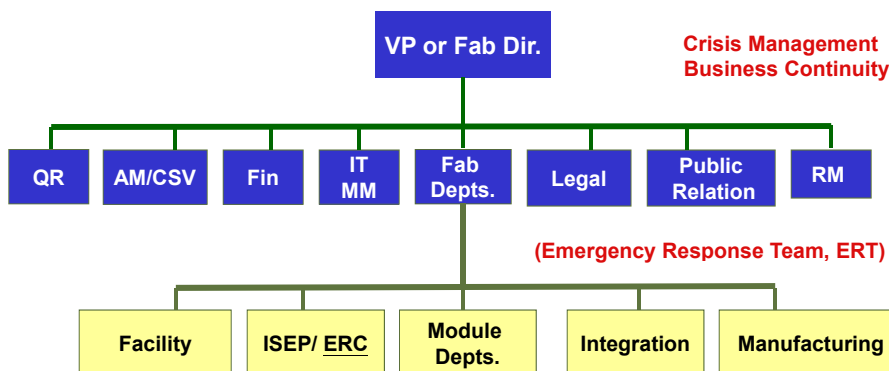
- A framework with clear ownership of related function/department to safeguard customers and key stakeholders' interest. Periodic review on threat identification, exercise and update on BCM.

5

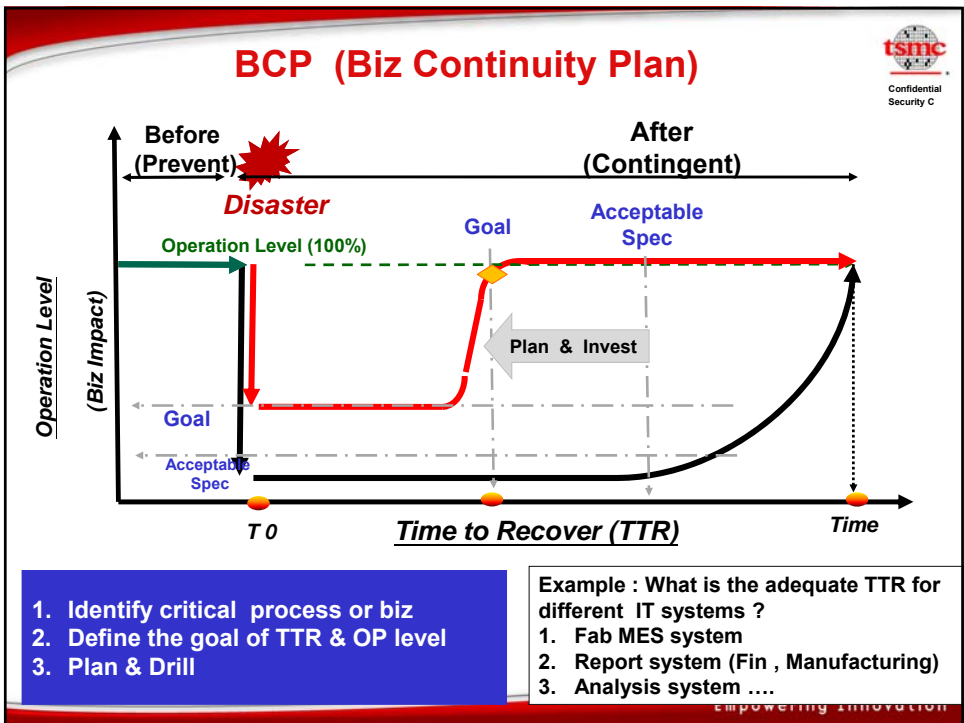
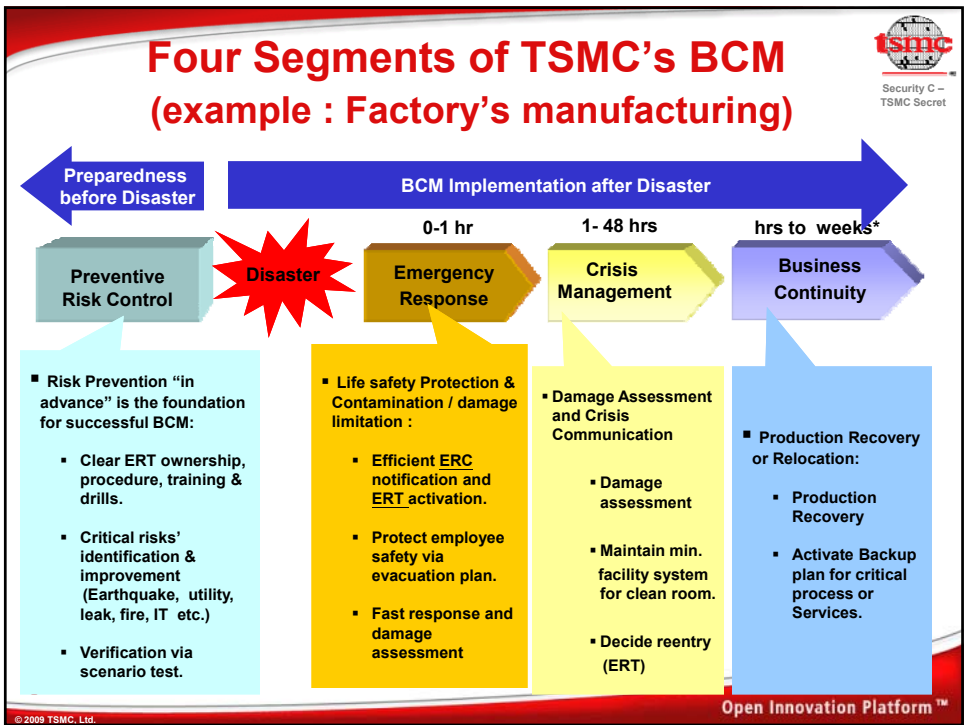
# BCM Organization Chart

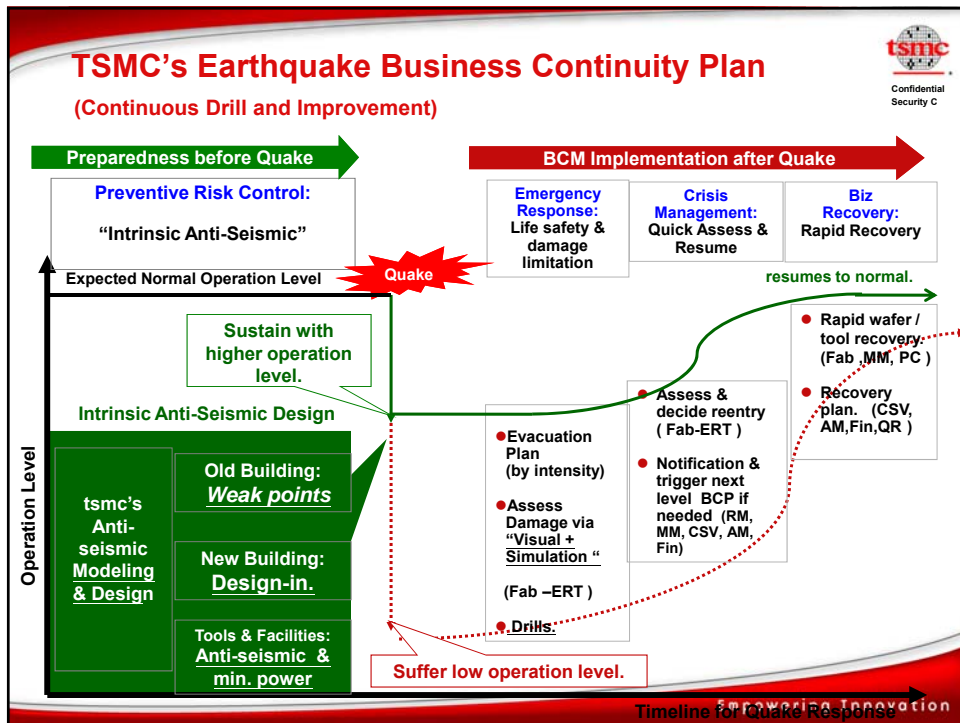
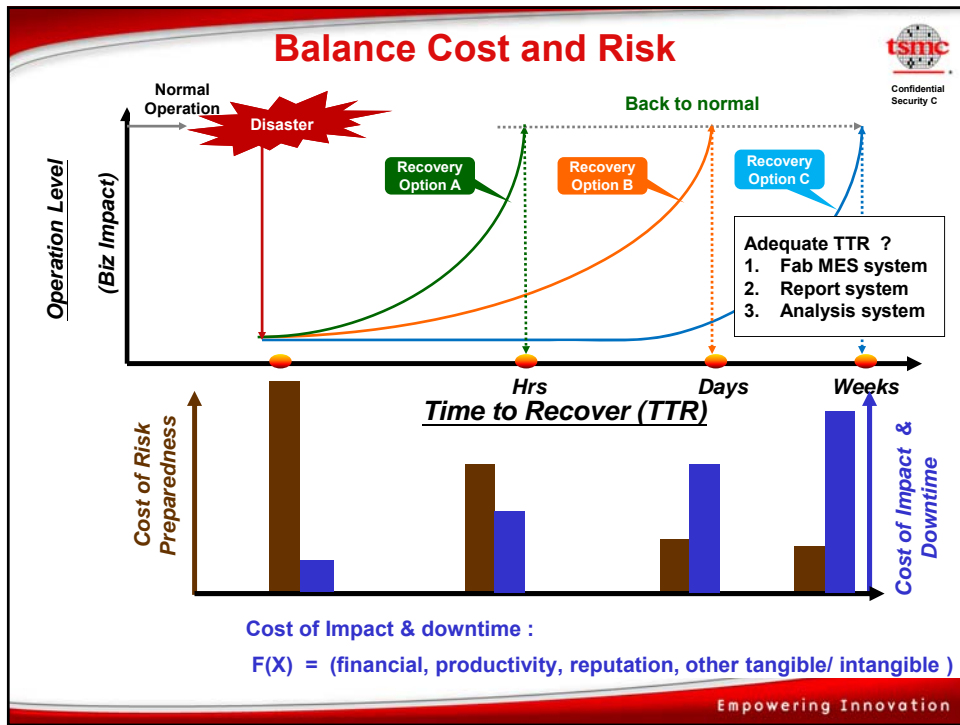


VP or committee chairman will host a business continuity meeting for catastrophe events.



6





## BCM for Employee & Society



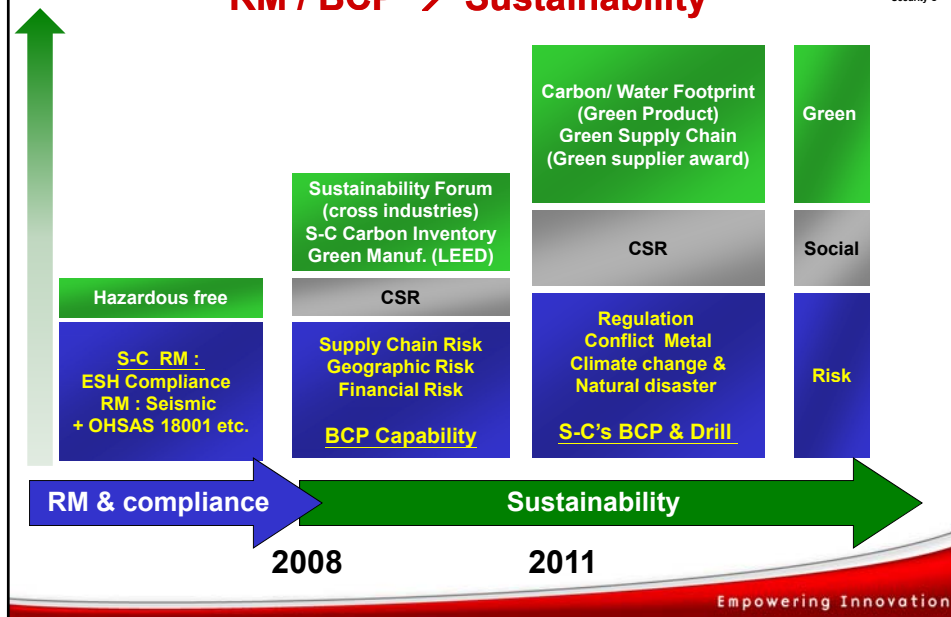
### Typhoon Morakot Disaster Relief Project : (Aug-2009)

Typhoon Morakot struck south Taiwan, causing Taiwan's most severe flooding in 50 years. (Peak of the rain: 1400mm/day, >600 dead)

- **Direct Support : >1000 employees' families were affected.**
  - Disbursed NTD 50 million for direct support.
  - Conducted site visits by direct supervisors.
  - Arranged other supports, such as "Water Truck" etc.
- **Assisted to repair 94 damaged schools (elementary & middle)**
  - Provided NTD 50 million
  - Initiated and teamed up with suppliers (Electrical, IT, repair....)
  - Book collection (>50K)
- **Pledged NTD 100 million to assist in the government's overall relief efforts.**

Empowering Innovation

## TSMC's Supply-Chain Risk Management RM / BCP → Sustainability





Confidential  
Security C

**Thanks for Your Attention**

Empowering Innovation