



**Asia-Pacific
Economic Cooperation**

2011/FWG22/018

Agenda Item: 11

Lesson Learned on Catch Certification Scheme


Purpose: Information
Submitted by: Indonesia




**22nd Fisheries Working Group Meeting
Bali, Indonesia
7 June 2011**

**Lesson Learn on Catch
Certification Scheme
(EC Regulation 1005/2008)
in Indonesia:
*a New Approach to Sustainability
and Long Term Trade***

*By. Heriyanto Marwoto,
Director of Fishing Port*



 Directorate General of Capture Fisheries
Ministry of Marine Affairs and Fisheries
©2011

**Council Regulation (EC) No. 1005/2008 on
Establishing a Community System to Prevent, Deter &
Eliminate Illegal, Unreported and Unregulated Fishing**

- EU Council Regulation No. 1005/2008 is the regulation from European Commission for EU member states, which is issued to prevent, deter, and eliminate IUU Fishing.
- By implementation of this EU regulation, the importation into the EU Community of fishery products obtained from IUU Fishing shall be prohibited.
- To ensure the effectiveness of the prohibition, fishery product shall only be exported into the UE Community when it is accompanied by a *catch certificate* in conformity with the regulation.
- This EU regulation has given a positive impact to Indonesia, as one of the biggest fish producers exporting to EU member states/markets.

Indonesia Position on EC regulation No. 1005/2008

- ▶ Indonesia Government fully supports the implementation of the Council Regulation (EC) No. 1005/2008.
- ▶ By implementation of this EU regulation, it will support Indonesia efforts in combating IUU Fishing practices, whilst expected to ensure continuation of exporting fisheries products from Indonesia to EU markets.
- ▶ Thus, Catch Certificate Scheme Implementation has been started in Indonesia since 1 January 2010.

LEGAL ASPECTS

For Catch Certification Implementation in Indonesia

Council Regulation (EC) No. 1005/2008

Minister Marine Affairs and Fisheries Regulation No. 28/2009 concerning Catch Certification

Decision of Director General of Capture Fisheries No. KEP.13/DJ-PT/2010 as amended by Decision No. 17/DJ-PT/2010 on Delegation of Catch Certificates Issuance to the Head of Regional Fishing Ports

PURPOSE OF CATCH CERTIFICATION IMPLEMENTATION IN INDONESIA

- To support trade activities of fishery product from Fishing activities by fishing vessels bearing the Indonesian flag which their products exported directly or indirectly to EU
- To support national and international efforts to prevent, deter and eliminate IUU fishing
- To ensure traceability of Indonesia fishery product in every step of production process started from fishing activities, processing, transportation to marketing process
- To support regulations with regard to conservation and management of fisheries resources

CATCH CERTIFICATION APPLIED IN INDONESIA *(Sertifikat Hasil Tangkapan Ikan/SHTI)*

- *Catch Certificate (SHTI) shall apply to all fishery products harvested from fishing activities in the sea.*
- The result of the meeting between KKP with DG Mare and EU Committee in December 2008 & April 2009 in Brussels: *"EU Committee agreed to simplify the certification for vessels of small scale fishermen (Small scale fisheries Business)"*

According to The Provisions of The EC Regulation;

Small-Scale Fisheries Business applied within this regulation are:

- ▣ **Fishing vessel with the size of max 12 m without net pulling machines**
- ▣ **Fishing vessel with the size of max 8 m using net pulling machines**
- ▣ **small fishing vessel/similar to 20 GT.**

Those small scale fishing vessels are not obligated to apply catch certificate, nevertheless, their related UPI (Fish Processing Unit)/Exporter shall provide a notification

TYPE OF CATCH CERTIFICATE

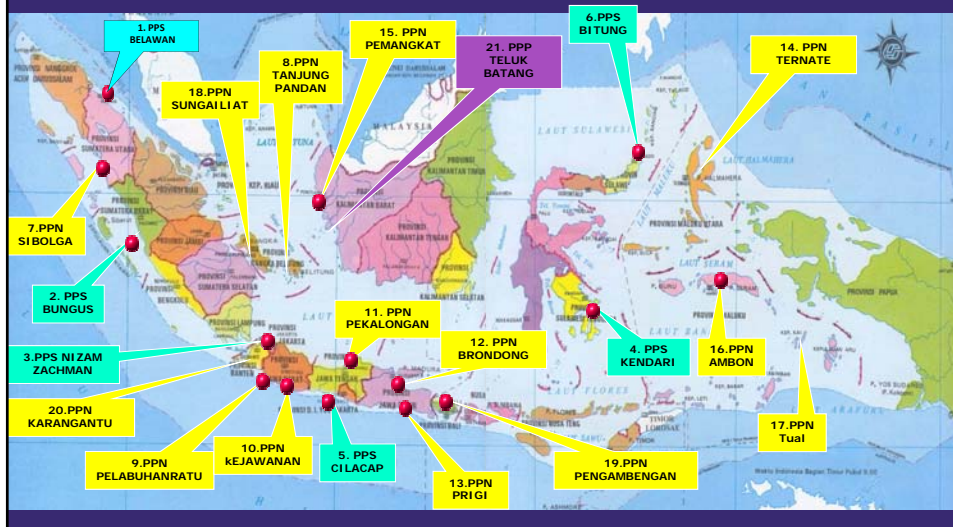
- **The Catch Certificate of Indonesia (SHTI) consists of 3 sheets: initial sheet, derivative sheet and simplified**
- **Initial Sheet of Catch Certificate is a sheet containing information of the whole fish products done for every fish unloading activity to be noted down (for notification purpose)**
- **Derivative Sheet of Catch Certificate is a sheet containing a part or the whole catch products in accordance with the initial sheet for trading purpose**
- **The Simplified Derivative of Catch Certificate is a sheet containing a part or the whole catch products for trading purposes of fishing vessel with size of max 12 m without net pulling machine, or fishing vessel max 8 m using net pulling machines or smaller fishing vessel /similar to 20 GT**

STRUCTURE OF COMPETENT AUTHORITY

For Catch Certification Implementation in Indonesia

Function	Responsibility
Competent Authority	Director General of Fisheries Capture (DJPT)
Daily Coordinator	Director of Fishing Port (central)
Local Competent Authority	Head of Fishing Port (regional)
Verification Support	Director General of Marine & Fisheries Resource Surveillance (DJPSDKP)
Related Development of Fish Processing Unit, Exporter and Contact Support	Director General of Fisheries Product Processing & Marketing (DJ P2HP)

21 Locations of Local Competent Authority Located at Central Technical Implementing Unit/UPT Pusat (According to Minister Regulation No. 28/2009)



**29 Locations of Local Competent Authority
Located at Regional Technical Implementing Unit/UPT Daerah
(Decision of Director General of Capture Fisheries No. KEP.13/DJ-PT/2010
amended by Decision No. KEP.17/DJ-PT/2010)**

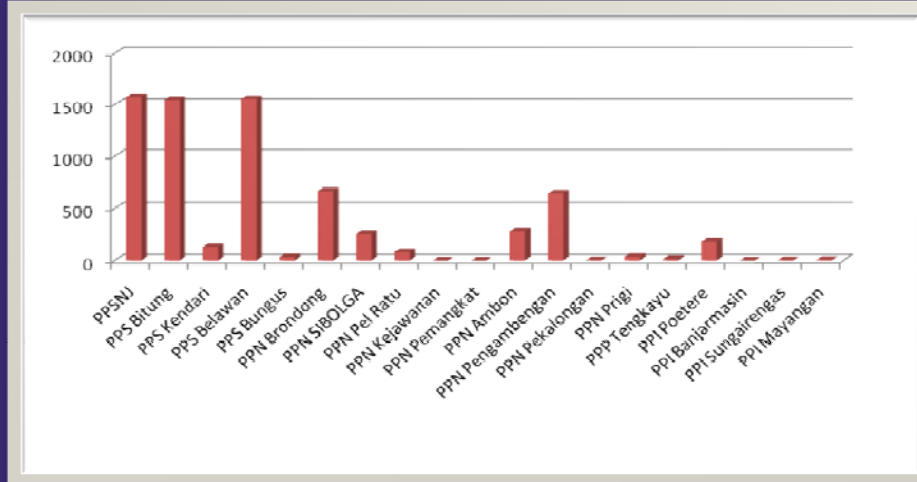


**VARIOUS EFFORTS THAT HAVE BEEN CONDUCTED IN
CONJUNCTION WITH THE IMPLEMENTATION OF
CATCH CERTIFICATION**

- **Conducted various coordination and meetings for preparing and implementing the catch certification**
- **Developed and improved technical guidance for implementation of Catch Certification**
- **Conducted various socialization to all relevant stakeholders**
- **Enhancement of human resources (training, comparative study, evaluation and assessment)**
- **improvement of infrastructure and communication system net work**
- **Developed data-base and on-line system for issuing the Catch Certificate otomatically**

RESULTS OF IMPLEMENTATION

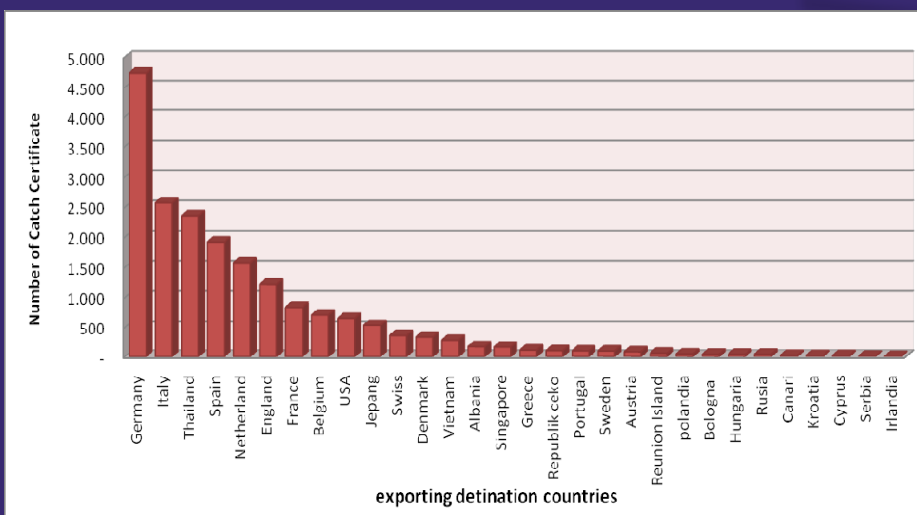
Total Catch of Certificate By Place of Issuance in 2010



Total Catch of Certificate by Places of Issuance in 2010 : 7,648 & 2011 : 3,828

RESULTS OF IMPLEMENTATION:

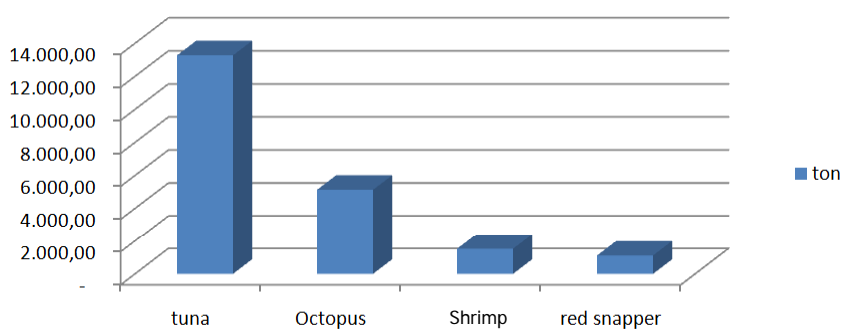
Catch Certificates to Exporting Destination Countries



RESULTS OF IMPLEMENTATION:

Dominant Species Composition of Fisheries Product exporting to EU in 2011

Ekspor Ikan Dominan Tahun 2010



Note:

- Total Export in 2010 = 48,543.99 ton
- Total export in 2011 until May = 21,729.08 ton

EMERGING ISSUES



Limited existing infrastructures/facilities

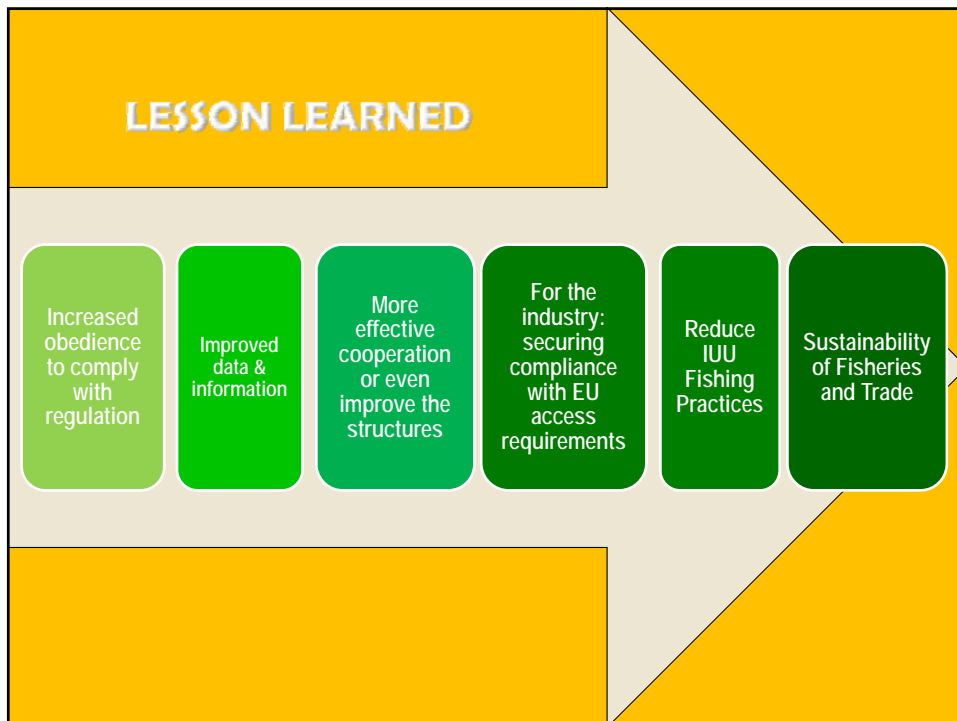
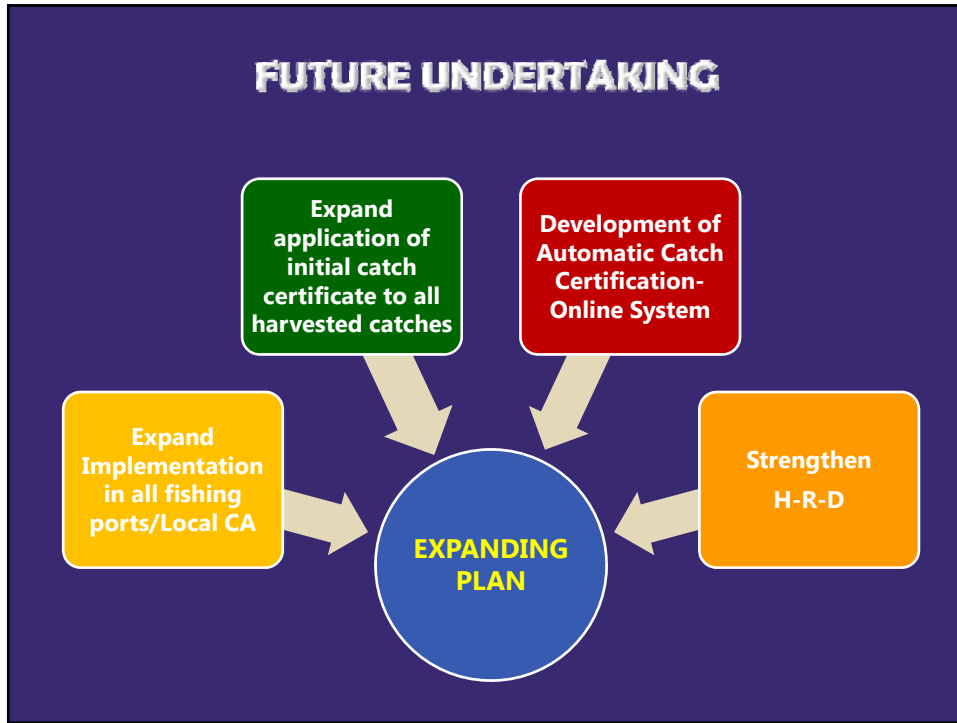


Occurrence case of rejection of fishery products by exporting destination country, caused by:

- Charging error of catch certificate: false-filling of catch certificate accompanying fisheries products exporting to EU market
- Part of fishery products which its origin/initial fish catch come from a country that has not notified EC regulation



Database/On-line system & HRD need to be strengthened



PROPOSED FUTURE COOPERATION

1. **Sharing/exchange experience: Reciprocal Visit of APEC Economist/Fisheries Officer/Experts**
2. **Technical Cooperation: to improve implementation of Catch Certification**
3. **Data/Information Sharing**

*THANK YOU
TERIMA KASIH*



Directorate General of Capture Fisheries
Ministry of Marine Affairs and Fisheries
©2011