



**Asia-Pacific
Economic Cooperation**

2019/EPWG/DIA/014

Agenda Item: 9B

Capacity Building for Public-Private Sector

Submitted by: Philippines



**APEC Resilience Week
Taipei, Chinese Taipei
30 September - 2 October 2019**

Capacity Building for Public-Private Sector

By:

VAdm Alexander P Pama AFP (Ret)

SM Prime and NRC Consultant for Disaster Resilience

APEC Resilience Week

September 30- October 2, 2019

Taipei




Given Disaster Risk Reduction and Resilience

- All disasters are local
- Government has ultimate responsibility
- Government can not do it alone
- Multi-stakeholder convergence is an imperative
- Private sector plays critical role



Scope of Presentation

- Legal Mandates
 - National Resilience Council
 - ARISE Philippines
 - SM Prime as major Private Sector Partner in DRR and Resilience
- 

Capacity Building for Public-Private Sector

RA 10121 National Disaster Risk Reduction and Management Act of 2010

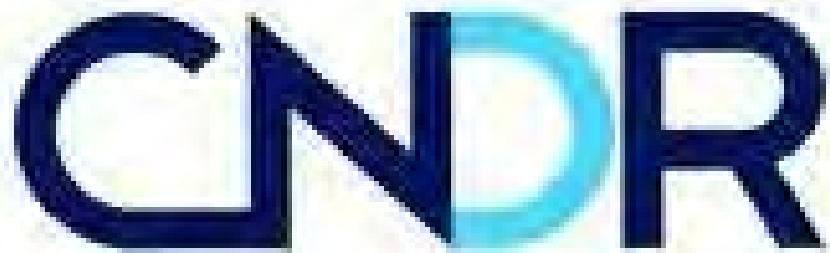
► Sec2. Declaration of Policy

- (d) Adopt a disaster risk reduction and management approach that is holistic, comprehensive, integrated, and proactive in lessening the socio-economic and environmental impacts of disasters including climate change, **and promote the involvement and participation of all sectors and all stakeholders concerned**, at all levels, especially the local community;
- (m) Engage the **participation of** civil society organizations (CSOs), **the private sector** and volunteers in **the government's disaster risk reduction programs towards complementation of resources and effective delivery of services to the Citizenry;**

► Sec 5. National Disaster Risk Reduction Management Council (membership)

- (ii) **One (1)** representative from the private sector;

Leading Private Sector Organizations for DRR

The logo for CNDR features the letters 'CNDR' in a bold, sans-serif font. The 'C' and 'R' are dark blue, while the 'N' and 'D' are a lighter, cyan blue. The letters are slightly shadowed, giving them a 3D appearance.

CNDR

CORPORATE NETWORK
FOR DISASTER RESPONSE

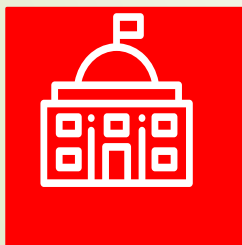


To foster a dynamic collaboration and holistic approach to disaster resilience, PDRF links the private sector to government agencies, humanitarian institutions, and civil society groups. Partner with PDRF, and together let us realize the vision of spreading hope and protecting the life and property of every Filipino.

NDRRMC – Business Sector Convergence Meeting 2016



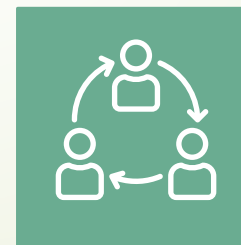
THE NATIONAL RESILIENCE COUNCIL



13 National Government Agencies



11 Private Sector Entities

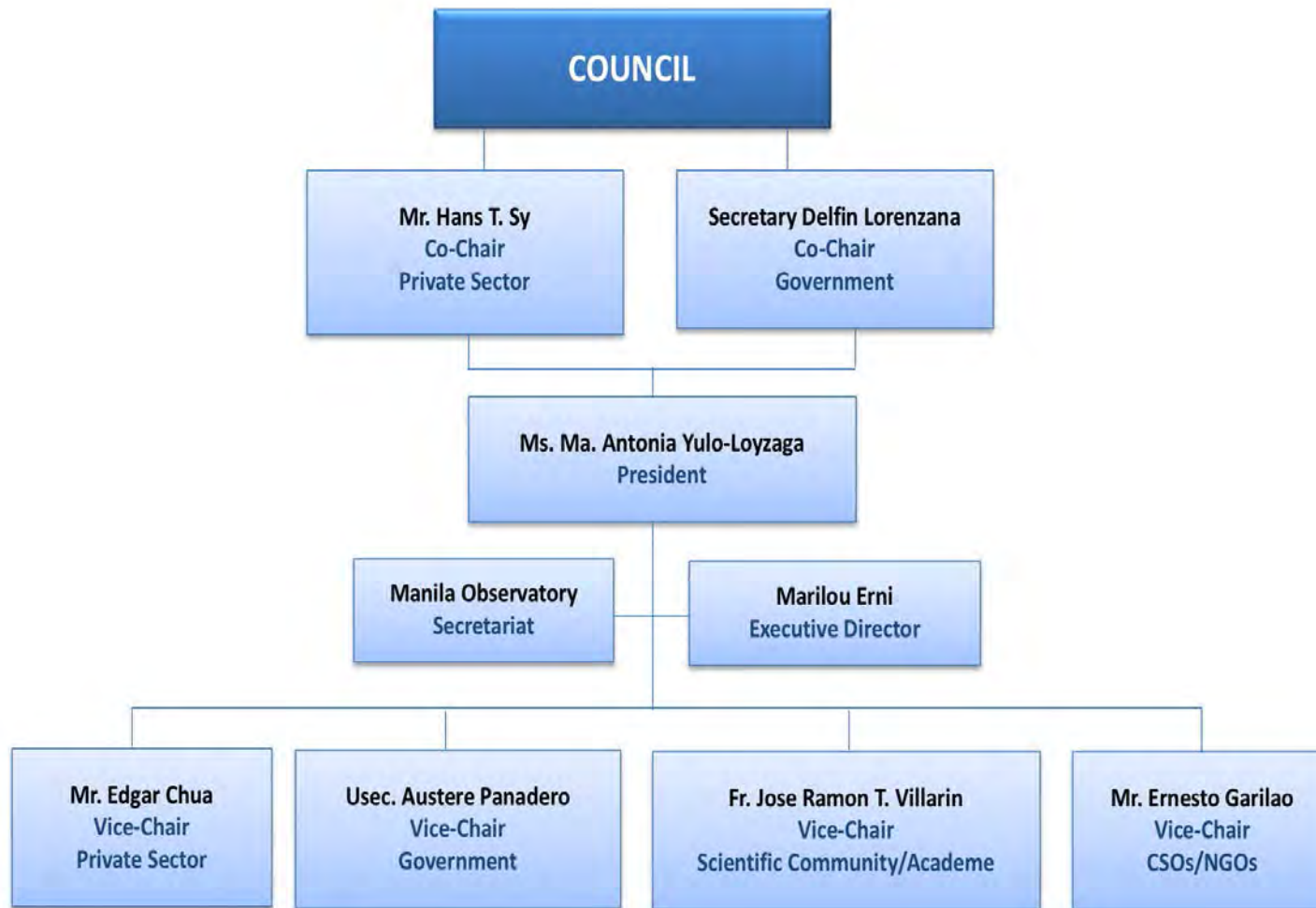


5 CSOs/NGOs



10 Academe/Scientific Community

NRC ORGANIZATION AND INITIAL PARTNERS



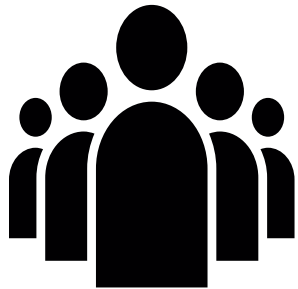
NRC - Local Government Units' Partnerships



8 Local Government Units



801 Villages



3.3 M Population (3.3% of PH's Total Population)



1.1 M ac./430,569 ha.



Adopt-A-City Campaign



Cagayan de Oro City and SM CDO Downtown Premier BPO Tower which will add 4,000 jobs to the city's employment opportunities.

NRC/ARISE Support to Iloilo Smart City Project



NRC as ARISE PH LEAD IMPLEMENTING PARTNER



Photo Courtesy: SM CARES

Main entry point for the private sector in reducing disaster risk.



What is ARISE

ARISE stands for the UNISDR Private Sector Alliance for Disaster Resilient Societies. ARISE is a UNISDR-led network of private sector entities, whose members voluntarily commit to align with the Sendai Framework. ARISE members share information, experience, activities, and projects, while the level of involvement and resources is at the discretion of each member. Most activities and interactions are at a local and regional level, and ARISE is structured accordingly.

Sustainable development cannot be achieved unless disaster risk is reduced

Slide Source: Arise Philippines Secret



PUBLIC-PRIVATE PARTNERSHIPS ON DRR



GLOBAL



NATIONAL



ARISE Philippines Network

LOCAL



NATIONAL RESILIENCE COUNCIL



Adopt-A-City Program





ARISE WORK THEMES

SEVEN THEMES

(1) Disaster Risk Management Strategies

(4) Education and Training

(6) Urban Risk Reduction and Resilience

(5) Legal and Regulatory

(7) Insurance

(2) Investment Metrics

(3) Benchmarking and Standard



ARISE PHILIPPINES



ARISE PHILIPPINES WORK THEMES

DISASTER RISK MANAGEMENT STRATEGIES

Building partnerships with and between the public and private sector to assess their disaster risks and develop appropriate disaster risk management strategies and plans.

EDUCATION AND TRAINING

Collaborating with leading universities, training institutions, professional associations, and educational outreach programs in all regions to introduce or improve disaster risk management into the curricula of education and training service.

URBAN RISK AND RESILIENCE

Supporting local business communities and governments to increase awareness of and understanding for improving disaster resilience in the urban and built environment, and will inter alia address critical infrastructure and basic service delivery, transportation, energy and utilities services, and information and communications technology.





DESCRIPTION

ARISE will build partnerships between public and private sectors to assess disaster risks and develop appropriate risk management strategies and plans. Management strategies include preventing the creation of new risks through risk-sensitive investment, reducing existing risks through corrective actions and strengthening resilience, through business continuity planning and insurance.

MEMBERS

Aboitiz Equity Ventures	Nestle Philippines
Belle Corporation	Park Inn by Radissons
Chinabank	Philippine Green Building Council
Conrad Hotel Manila	PriceWaterhouse Coopers
Corporate Network for Disaster Response	Small and Medium Enterprises (SMEs)
DHL Supply Chain	SM Prime Holdings Inc.
Jollibee	SMX Convention Corporation
Meralco	Waltermart
Highlands Prime Inc.	Radisson Blu



ARISE PHILIPPINES

Education and Training



DESCRIPTION

ARISE will collaborate with leading universities, training institutions, professional associations, and educational outreach programs in all regions to introduce or improve disaster risk management into the curricula of education and training services.

MEMBERS

National Resilience Council	National University
Ateneo de Manila University	Asia Pacific College
Business Continuity Managers Association of the Philippines	Philippine Business for the Environment
De La Salle University	Enderun College
Far Eastern University	Holy Angel University
Miriam College	University of Asia and the Pacific
GMA Network Inc.	LBC Express
The Star Group of Publications	Small and Medium Enterprises



DESCRIPTION

ARISE will support local business communities and governments to increase awareness of and understanding for improving disaster resilience in the urban and built environment, and inter alia address critical infrastructure and basic service delivery, transportation, energy and utilities services, and information and undertake informed local risk-sensitive planning and facilitate public-private collaboration to address gaps in disaster risk management.

Manila Observatory	Atlas Mining
BDO Insurance Inc.	SM Development Corp.
Double Dragon Properties Corp	EIAN Management Consulting
Green Antz Builders Inc.	Hypervolt Contractor Corp
Monolith Construction and Dev't Corp	Megawide Construction and Dev't Corp
Jose Siao Ling Associates	Oscar M. Lopez Center
Philippine Insurers and Reinsurers Association	PNB General Insurance
Sanford Marketing Corp	Don Lee Builders
Weather Philippines Foundation	SM Hotels and Convention Centers
Supervalu Inc.	SM Hypermarket
The Net Group	UnionBank
Urban Land Institute	SM Investment Corp



- 74 Malls
- 66 Residential Projects
- 11 Office Buildings
- 15 Hotels and Convention Centers
- 2,303 stores nationwide
- 48 SM Supermarkets,
- 44 SM Hypermarkets,
- 156 Savemore stores,
- 39 WalterMart stores,
- 210 Alfamart stores, and
- 1,749 specialty stores

SM Group's Value Chain



PRODUCT SOURCING	PROPERTY DEVELOPMENT AND MANAGEMENT	SUPPLY CHAIN MANAGEMENT
<ul style="list-style-type: none">  220+ manufacturers  280+ distributors  20+ artisans  10+ local communities  20+ international suppliers 	<ul style="list-style-type: none">  18,567 mall tenants  215 construction contractors  90 service providers (security, maintenance, housekeeping) 	<ul style="list-style-type: none">  20+ IT software and solutions providers  180+ general contractors  50+ manufacturers of furniture, fixtures and equipment  55+ suppliers of printed materials and other consumables

Philippines' Distribution of Establishments (by Enterprise Size)



Direct Tenants: 8,000 32%

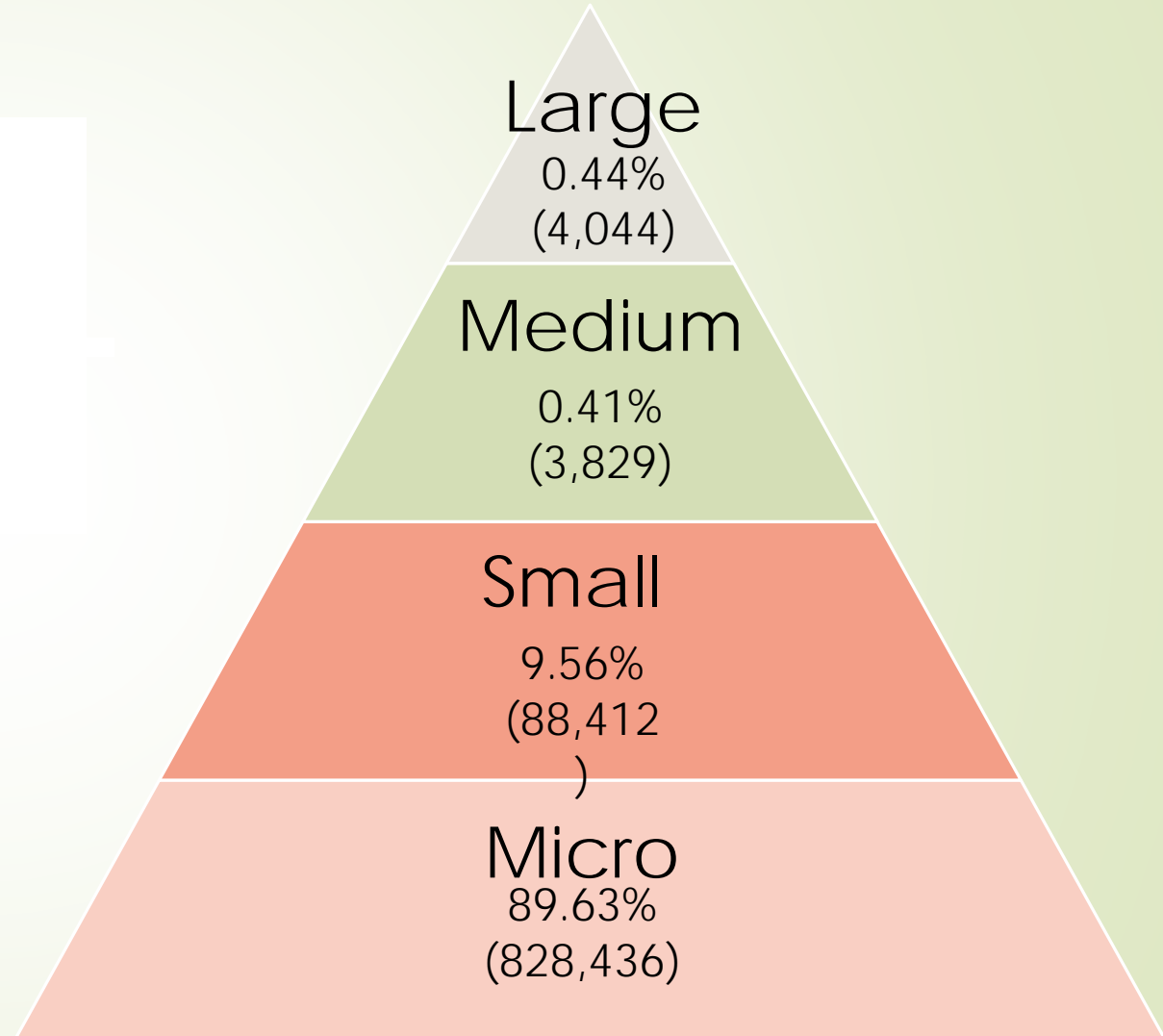
Direct Suppliers: 2,000 / 8%

Indirect from SM Store,
Supermarket and Others
15,000 / 60%

27% SMEs
from

MSME CLASSIFICATION

ENTERPRISE	CATEGORY	
	By Asset Size	By Number of Employees
Micro	Up to Php 3M	1-9
Small	Php 3M-Php 15M	10-99
Medium	Php 15M – Php 100M	100-199



Source:

Slide Source: SM Prime

Source:

SM Disaster Risk Reduction (DRR) and Resilience Program

- ❖ Disaster Resilience Policy and Framework Project
- ❖ DRR Training and Capacity Development
- ❖ SM Resilience Center Project
- ❖ Collaborative Engagements with OCD/NDRRMC and other DRR Stakeholders

SM Disaster Resilience Policy Project

- ❖ Formulation of Framework and Policy Document
 - ❖ Conduct of Post-April 2019 Earthquake Forum
 - ❖ Convening of FGD and Workshop to formulate SM Disaster resilience Policy
 - ❖ Participants: Managerial level personnel of SMPHI and affiliated Business Offices and Units
- ❖ Output:
 - ❖ SMPHI Resilience Policy Document
 - ❖ Harmonized SM Business Units' Disaster Resilience Protocols, SOPs and Manuals

Disaster Resilience Trainings and Capacity Development

Engagements/Collaborations with OCD/NDRRMC

❖ DRR 101 Online Training for SM Personnel

❖ Purpose: SM Personnel Basic DRR and Resilience Knowledge

❖ Target Participants: All SM Personnel

❖ Participated to Date: 4,861 SM Personnel (91% of total SM Personnel)

Disaster Resilience Trainings and Capacity Development

Engagements/Collaborations with OCD/NDRRMC

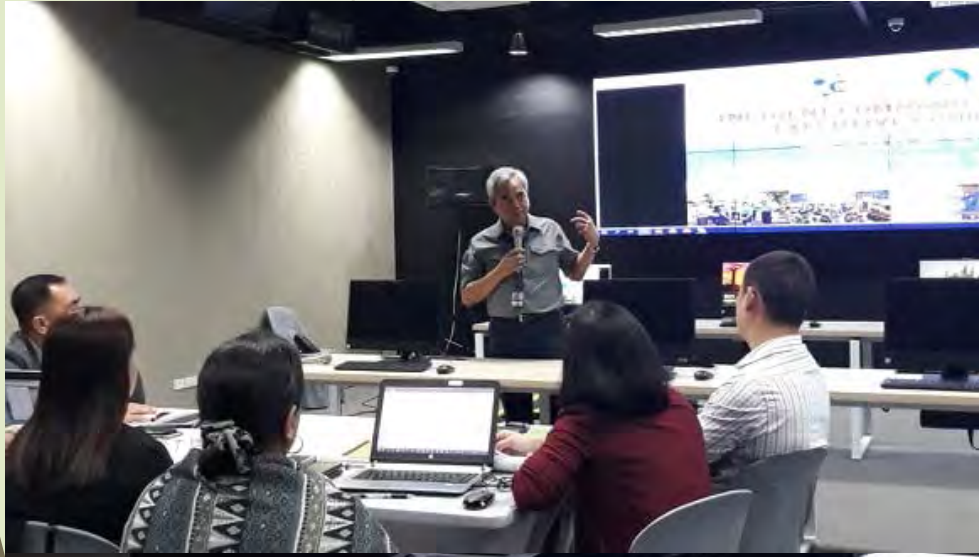
❖ Incident Command System Course

❖ Purpose: Train relevant SM Personnel re ICS Principles and Practices

❖ Target Participants: Mall Managers; Assistant MM; CRS Managers; other relevant personnel

❖ Participated to Date: **152 persons in 4 Batches**

Disaster Resilience Trainings and Capacity Development





Disaster Resilience Trainings and Capacity Development

Engagements/Collaborations with OCD/NDRRMC

❖ Emergency Operations Center Course

- ❖ Purpose: Acquire know how of OCD/NDRRMC EOC Doctrines and operational procedures in operating an EOC in relation to our SM Resilience Center and other SM DRR and Resilience activities
- ❖ Target Participants: SM personnel from DRR and Resilience related functions
- ❖ Participated to date: 2 CRS personnel

Disaster Resilience Trainings and Capacity Development

Engagements/Collaborations with OCD/NDRRMC

- ❖ **All Malls participation in NDRRMC Quarterly National Simulated Earthquake Drills (NSED)**
 - ❖ Continuing education and actual participation by all Mall personnel nationwide
- ❖ **Other future Training Courses**
 - ❖ Laderized ICS courses
 - ❖ Service Continuity Course

MMDA Earthquake Drill Participation with NRC

(27 July 2019)



- SM thru NRC actively participated in preparations, scenario injects and as drill evaluators
- SM hosted the crowd unrest in looting scenarios held in SM Marikina and SM Manila
- Said SM Malls exercised our current EQ and other emergency protocols

SM Resilience Center Project (Milestones)

- ❖ Concept of Operations (ConOps) formulation team (CCG, CRS and IT) went on to Chinese Taipei for a study visit to NCDR EOC and relevant sites and offices
- ❖ On-going Review and fine-tuning of Resilience Center Concept of Operations (V.5)
- ❖ Visits to Chinese Taipei by SM DRRM Team to conduct consultations with NCDR, APEC-EPCC for the SM Resilience Center

SM Resilience Center Project (Milestones)

❖ Ways Ahead:

- ❖ Finalization of SM Resilience Center (SMRC) ConOps
- ❖ Organization of an SMRC Task Group
- ❖ Formalize partnerships/collaboration with NRC, MO, APEC- EPCC, Chinese Taipei NCDR, Asia Pacific College (APC) for technical assistance in the sciences, systems design and architecture and processes needed to organize and operate



SM Resilience Center Project (Milestones)

- ❖ Crafting and Formulation of Final ConOps and Operational Manuals
- ❖ Determination of and requisitioning for SMRC Operational requirements
- ❖ Operational Testing



Disaster Risk Reduction (DRR) Initiatives



DRR/BCP Workshops for in partner with NRC, BCMAP, UP-ISSI, UN GETI



Incident Command System (ICS) with Office of Civil Defense



Support to all DRR initiatives of MMDA, Office of Civil Defense, Department of Health, Department of Trade and Industry and other government agencies



Slide Source: SM Prime



Disaster Risk Reduction (DRR) Initiatives



DRRM AND THE ROLE OF PRIVATE SECTOR



WORKSHOP ON LOCAL URBAN INDICATORS



DISASTER RESILIENCE CONFERENCE



ARISE GENERAL MEETING



METRO MANILA EARTHQUAKE DRILL



2018 TOP LEADERS FORUM



Disaster Risk Reduction (DRR) Initiatives



DRR FORUM



MOA SIGNING



DRR WORKSHOP: 2019 UN GETI WORKSHOP





Disaster Risk Reduction (DRR) Initiatives



HANS T. SY

ARISE international Board Member,
NRC Co-chairman for the Private Sector
SM Prime Holdings Chairman of the Executive
Committee

“Today, disasters have become more frequent and severe. The government and the private sector must then work together to find solutions for greater resiliency.

SM prime as a responsible property developer places Disaster Risk Reduction as one of its core strategies. We have to protect our business and property and ensure the safety of our tenants, customers and employees.

Disaster Risk Reduction makes good business sense.”



Thank You!