



**Asia-Pacific
Economic Cooperation**

2022/CTI/WKSP6/006

Customs Administration of the Netherlands

Submitted by: Netherlands



**Utilizing Digital Technology in the Field of
Trade Facilitation Under the Current COVID-19
Pandemic and Beyond: Best-Practices
Sharing Workshops (Phase II) – First
Workshop on Technology to Support
Customs Procedures
3 August 2022**



Douane
Belastingdienst

Customs Administration of the Netherlands

Benno Slot
Specialist Advisor

APEC Workshop August 3 2022





Douane
Belastingdienst



Remittance

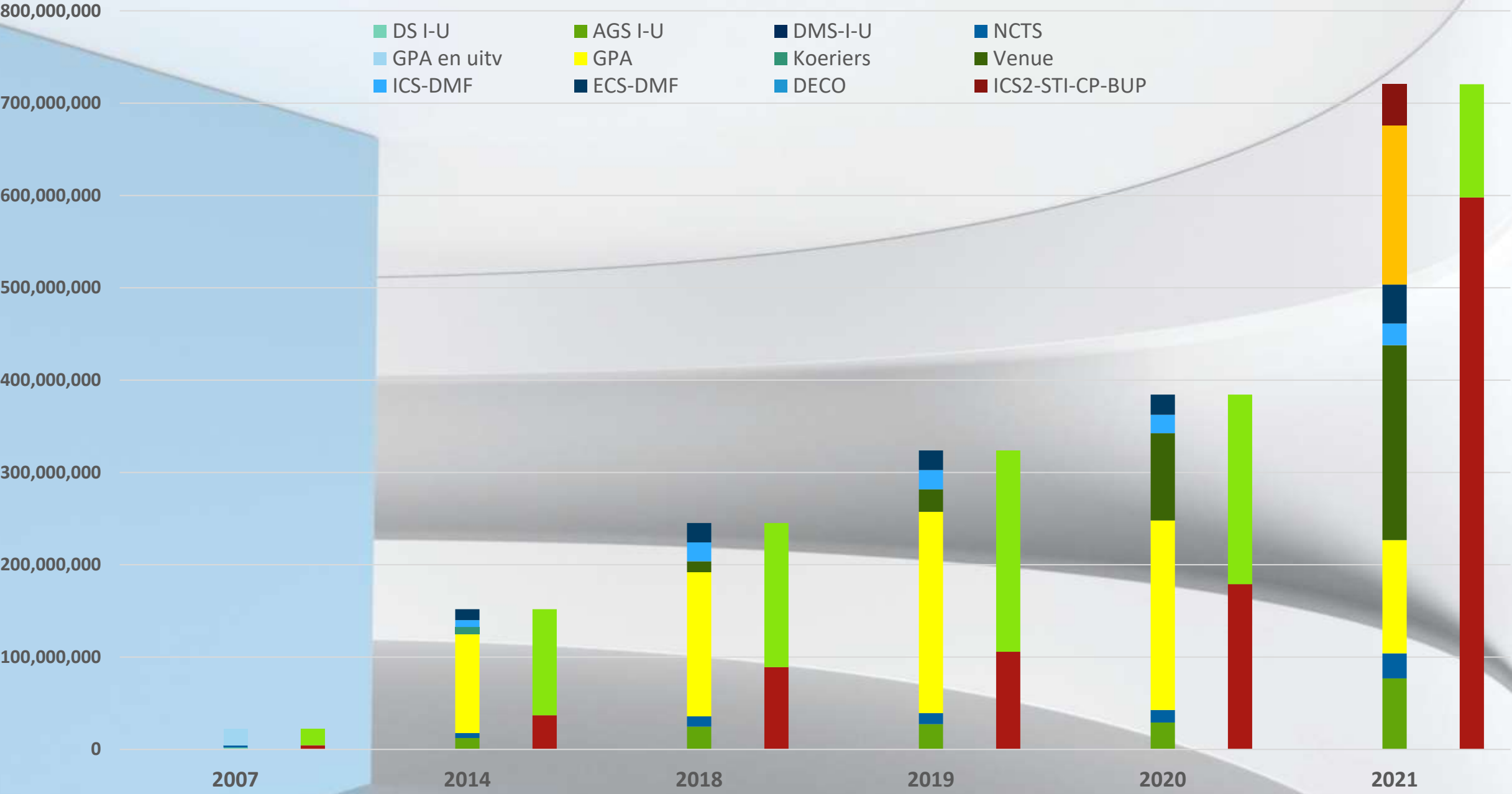


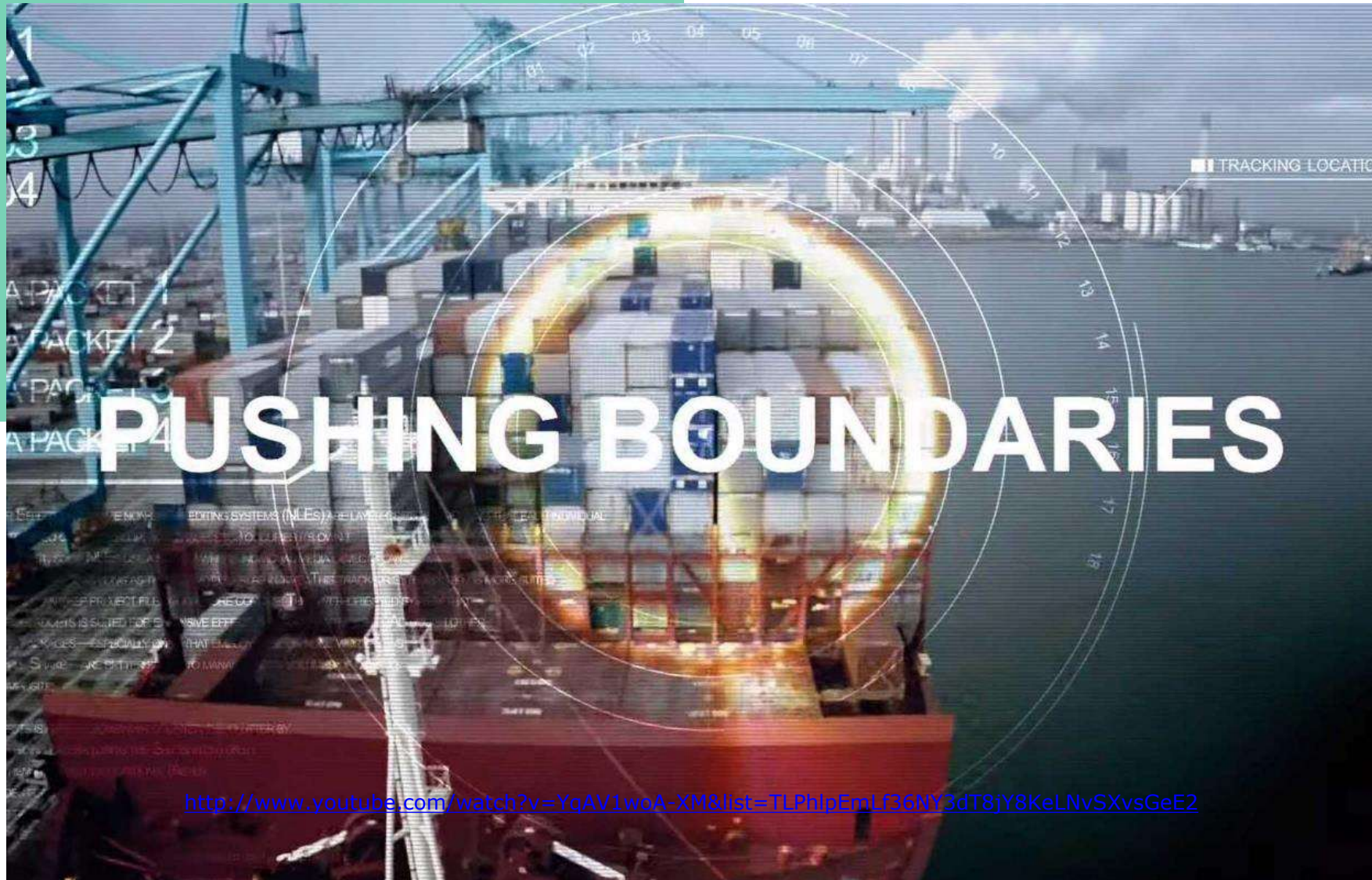
Protect

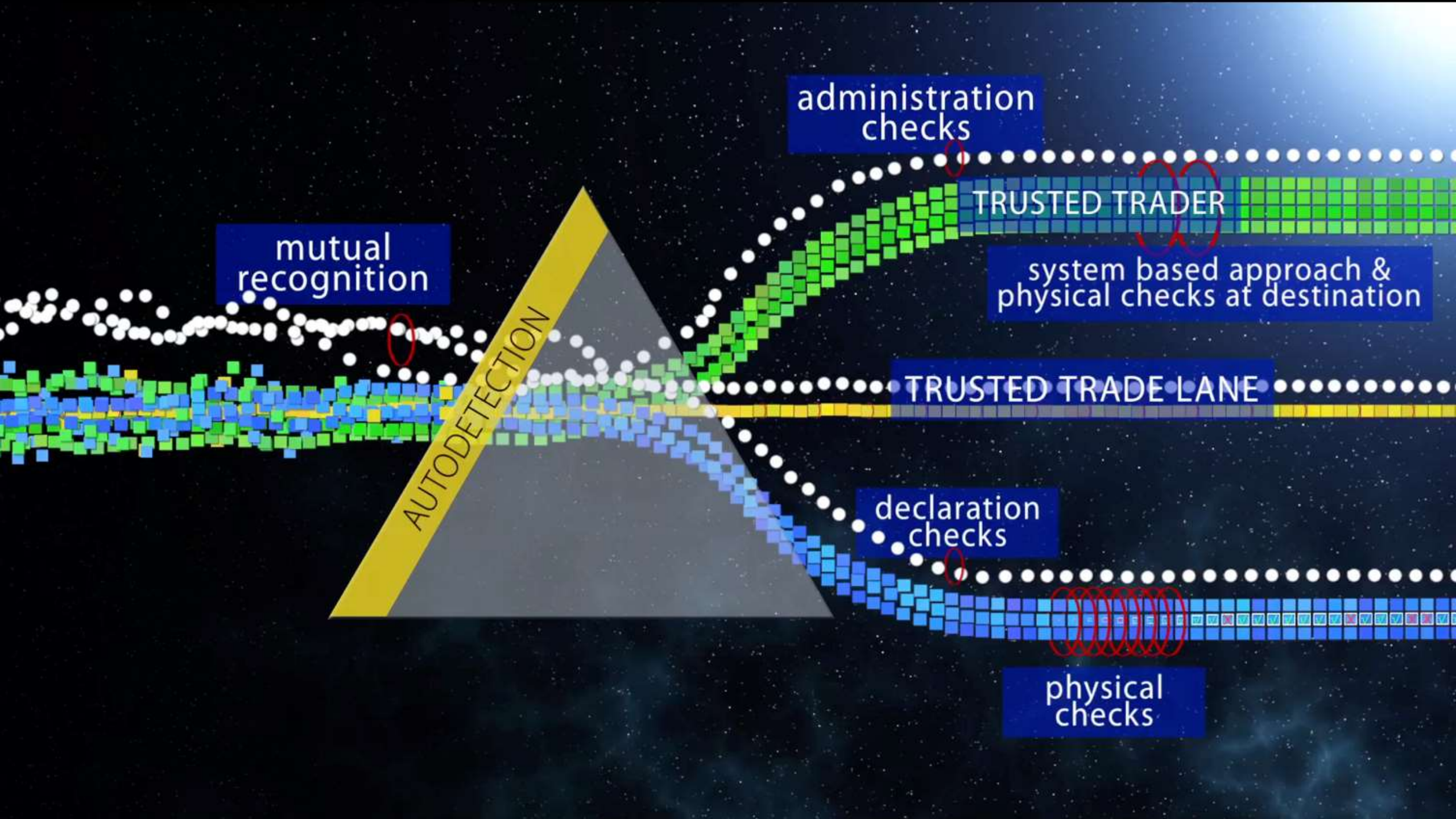


Competitiveness

processed declaration lines







HAZARD

A **HAZARD** is something that has the potential to harm you



RISK

RISK is the likelihood of a hazard causing harm



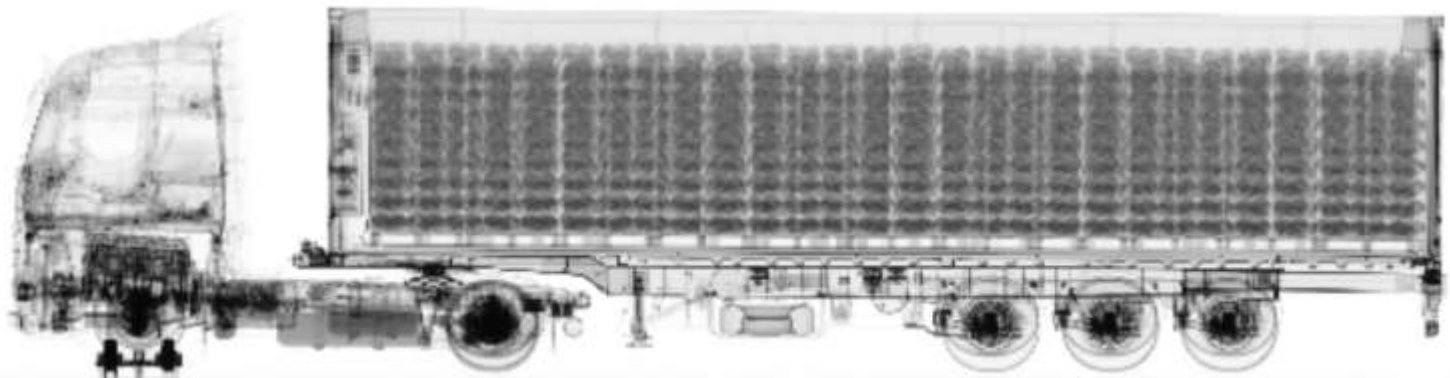
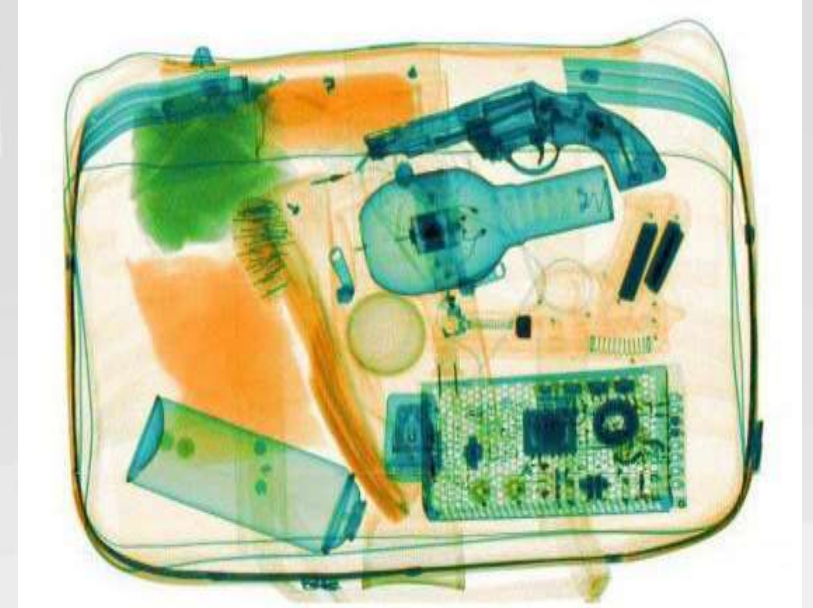
Challenge: FROM IF-THEN SELECTIONS TO ALGORITHMS

AUTODETECTION GOODS

AUTODETECTION



- Goods
- Fundamentals
(Tariff – Value)
- Economies (origin)
- Operators
- Supply Chain – Itinerary
- Risks and Intell



AUTODETECTION DATA

AUTODETECTION



CRIS

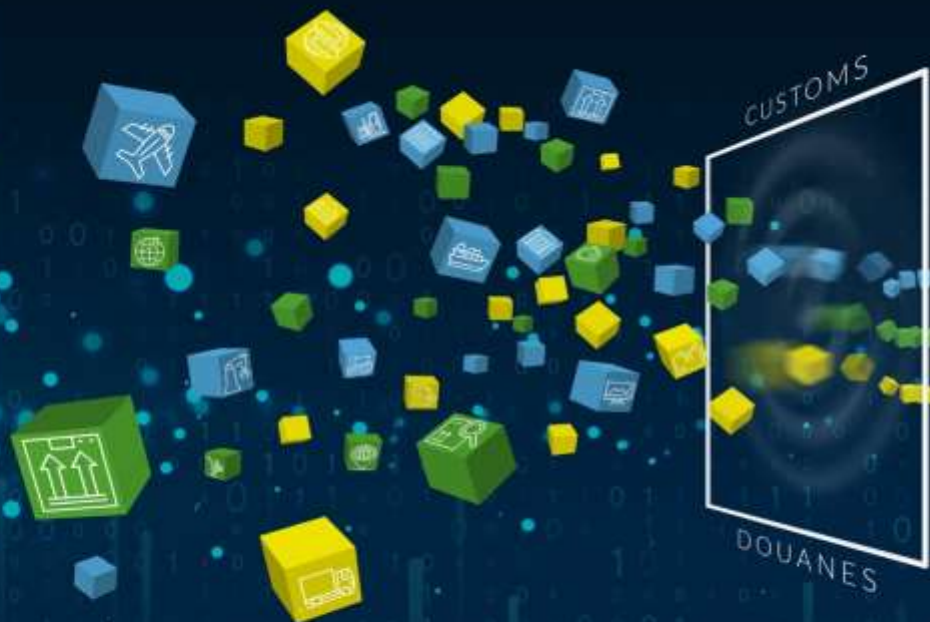


Summary:

- Data from sensor technology
- Re-use of data
- Sharing data (interoperability)
- Authentic data for validation
- Artificial intelligence
- Augmented reality

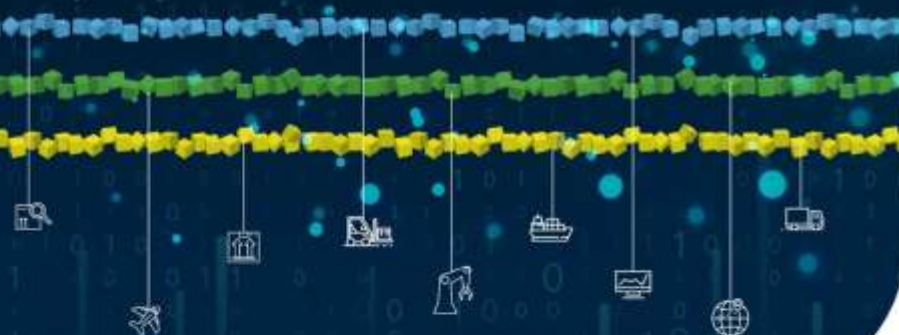


**WCO Technology
Conference & Exhibition**
Maastricht, The Netherlands
18 to 20 October 2022



The Changing Landscape of Global Trade

Driving Customs performance with data and technology



Hosted by



Customs Administration of the
Netherlands
Ministry of Finance