



**Asia-Pacific
Economic Cooperation**

2025/SOM3/EGILAT/DIA/008

Agenda Item: 2

Passenger and Cargo Control Programme

Submitted by: United Nations Office on Drugs and Crime (UNODC)



**Dialogues and Mini-Exhibition on Enhancing
Enforcement and Legal Timber Trade through
Stakeholder Collaboration and Innovation
Incheon, Korea
28 July 2025**

Enhancing Enforcement and Legal Timber Trade through Stakeholder Collaboration and Innovation

UNITED NATIONS OFFICE ON DRUGS AND CRIME

28 July 2025
Incheon, Republic of Korea



PASSENGER AND CARGO CONTROL PROGRAMME



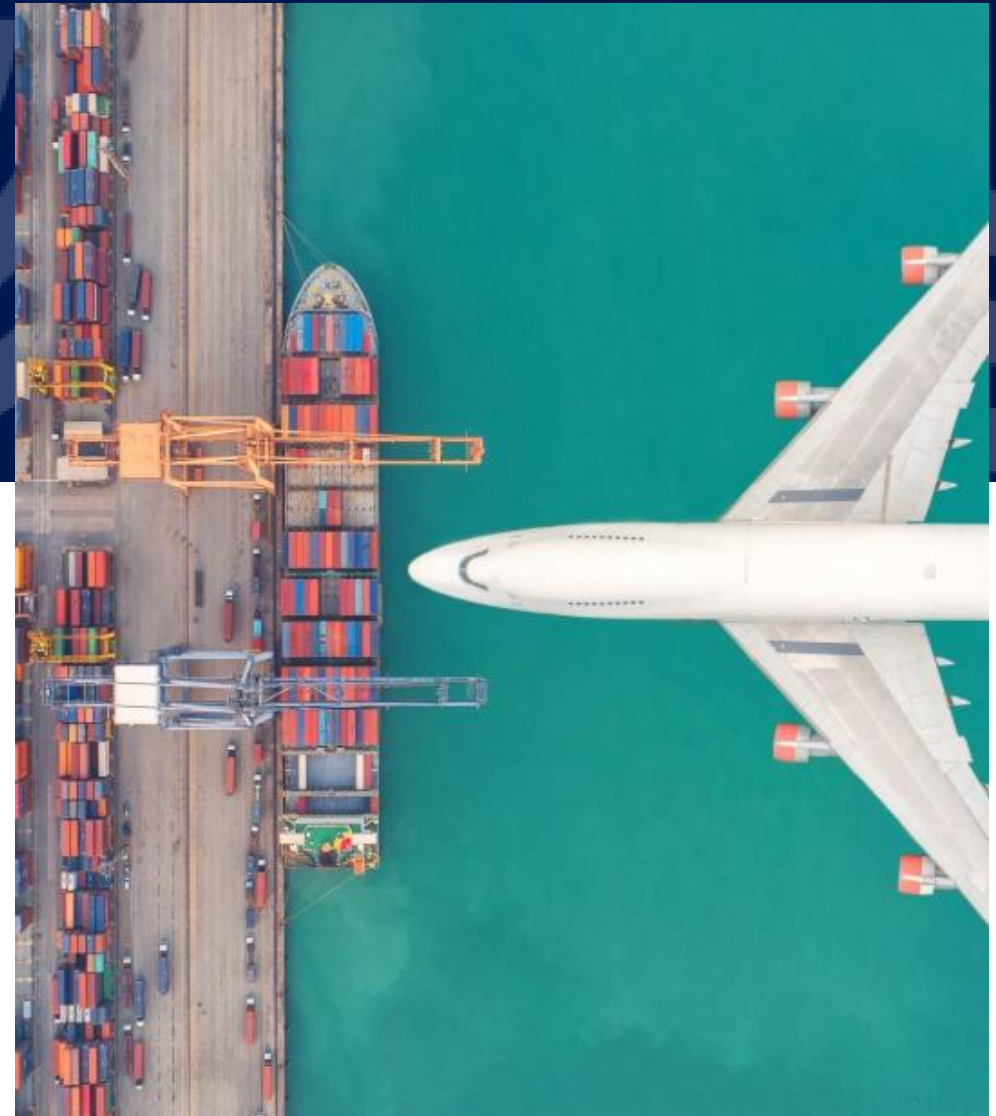
United Nations
Office on Drugs and Crime



World Customs Organization
Organisation mondiale des douanes



INTERPOL



WHO?



PASSENGER AND CARGO CONTROL PROGRAMME

PCCP contributes to building the capacity of units comprised, as relevant, of customs, police, anti-narcotics forces, and other law enforcement agencies. These units are located at seaports, airports, dry ports, rail terminals and land border crossings and work to identify and inspect high-risk containers, cargo, mail and passengers. These efforts are assisted by enhanced inter-agency cooperation domestically and regionally – all with minimum disruption to legitimate trade and the movement of passengers.

OUR DONORS

Australia | Austria | Belgium | Canada | European Union | France
Germany | Japan | Netherlands | Norway | Switzerland | United Kingdom | United States

WHAT?



Improved capacity of Member States and their law enforcement agencies active at air, sea and land borders, to safeguard security, health and economy through the protection and facilitation of the international trade supply chain and the movement of passengers.

1 Inter-agency (when relevant) units



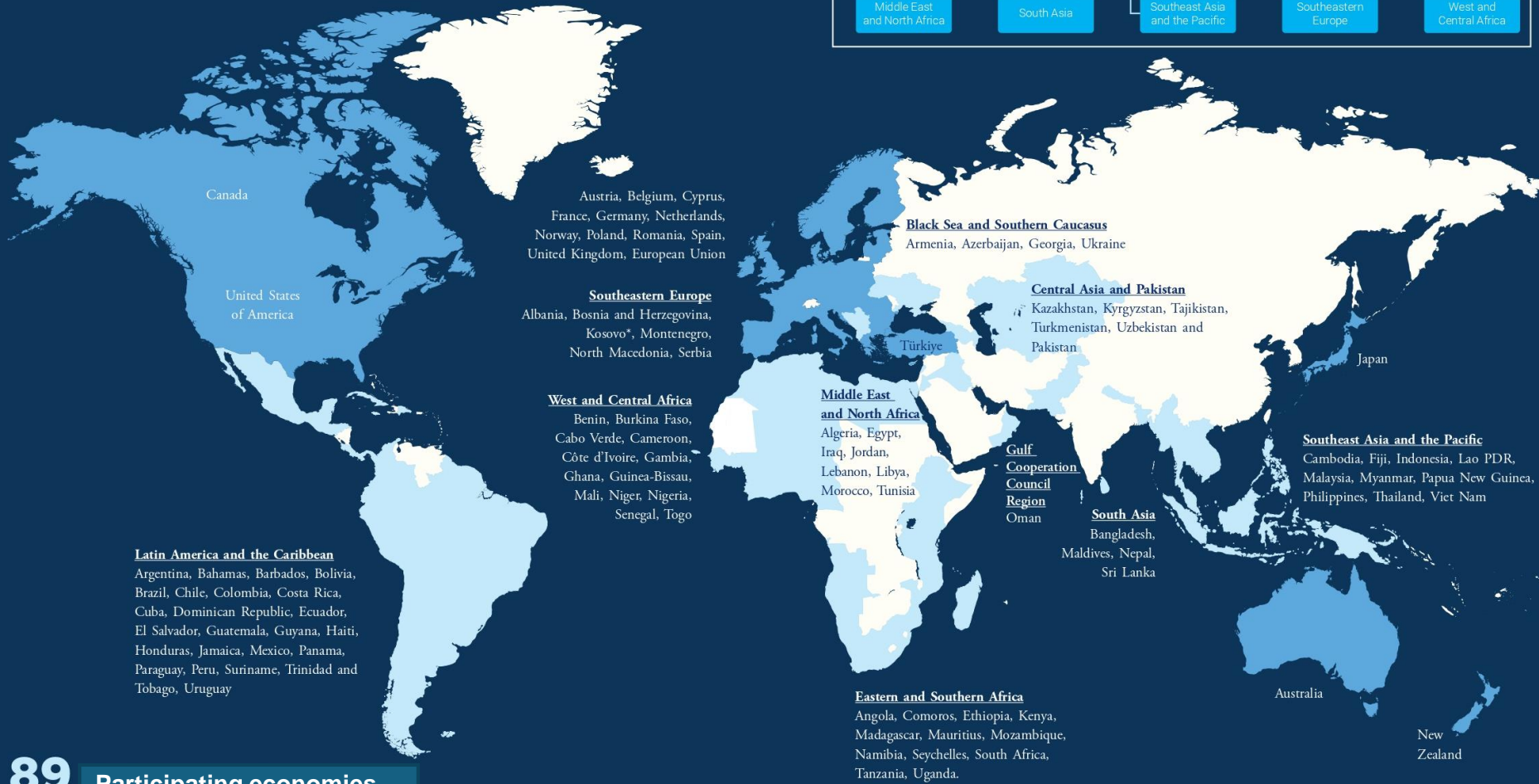
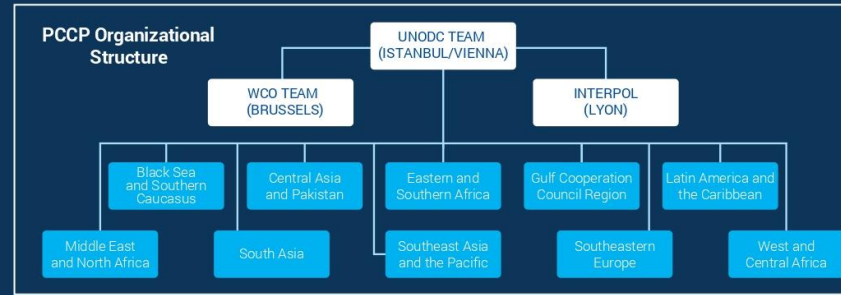
2 Building of technical and substantive skills



3 Fostering a network of communication and cooperation



PARTICIPATING ECONOMIES, DONORS AND CONTRIBUTORS



89 Participating economies
52 Donors and Contributors

Control units
192

Regions of implementation
10

** All references to Kosovo in the present report should be understood in the context of United Nations Security Council resolution 1244 (1999).
Note: The boundaries and names shown and the designations used on this map do not imply official endorsement or acceptance by the United Nations.*

Specialized Areas



Strategic Trade & Export Control



Trafficking of Minerals



Illicit Timber



Plastic & Hazardous Waste



Terrorist Travel



Trafficking in Persons & Smuggling of Migrants



Cultural Property



Drugs & Precursors



Crimes in the Fisheries Sector



Intellectual Property Rights



Falsified Medical Products



Trafficking of Wildlife



Efforts



The Law Enforcement Assistance Programme to Reduce Tropical Deforestation (LEAP) is a cooperation between three UNODC Global Programmes and INTERPOL that seeks to share expertise and build networks to assist Member in the fight against illegal deforestation and related crimes.

Approach

1. Holistic approach to secure the maritime trade supply chain from criminal infiltration

2. Strengthen interagency cooperation, build capacity for law enforcement agencies

3. Intervention at all stages of the trade supply chain

4. Linking and involving relevant criminal justice officials and private sector stakeholder





Multi-agency Cooperation

Establishing a multi-disciplinary law enforcement



Building of interagency task forces



Connecting economies of origin, transit and destination





Innovative Technologies

Developing and resourcing
platforms for stronger
data collection

Xylotron, Dart
MS/DNA, Mobile App

Data base or wood
profile for law
enforcement





Targeting Bottlenecks

Stronger focus on operational law
enforcement activities

Increased control of transportation
of wood products through road or
river checkpoints

Concentrate actions on a few regions of a
target economy

Collaboration – Key Elements

EFFECTIVE
COMMUNICATION
CHANNELS

CLEAR ROLES AND
RESPONSIBILITIES

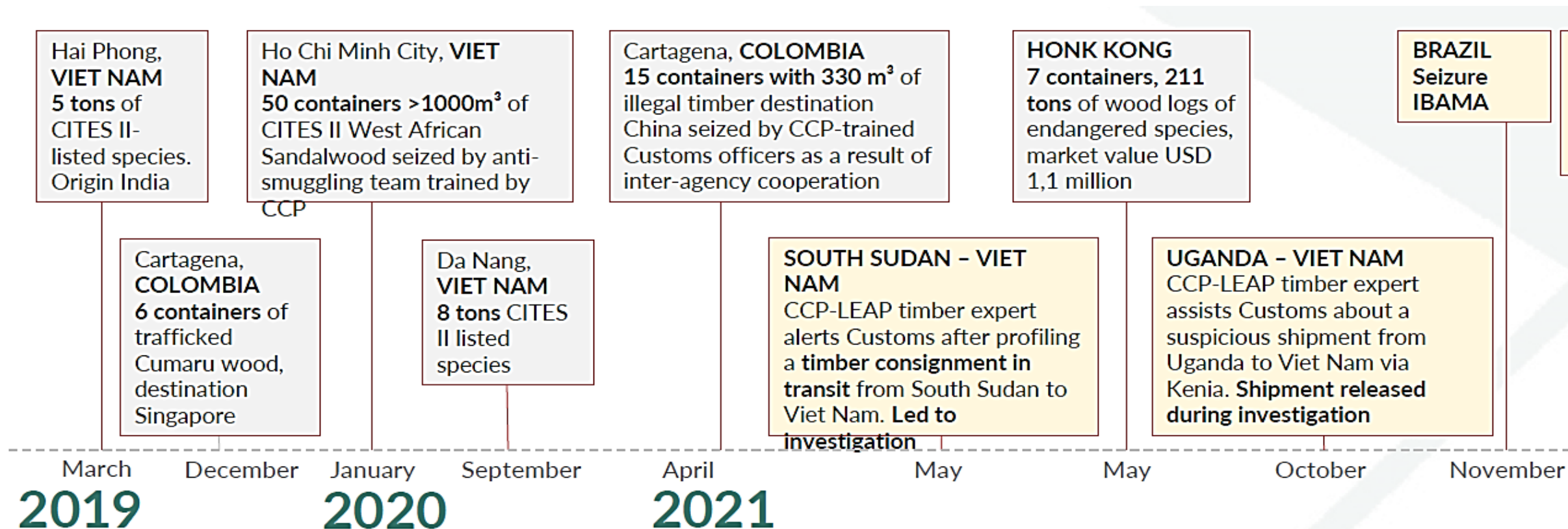
CULTURE OF
COLLABORATION, AND
MUTUAL SUPPORT

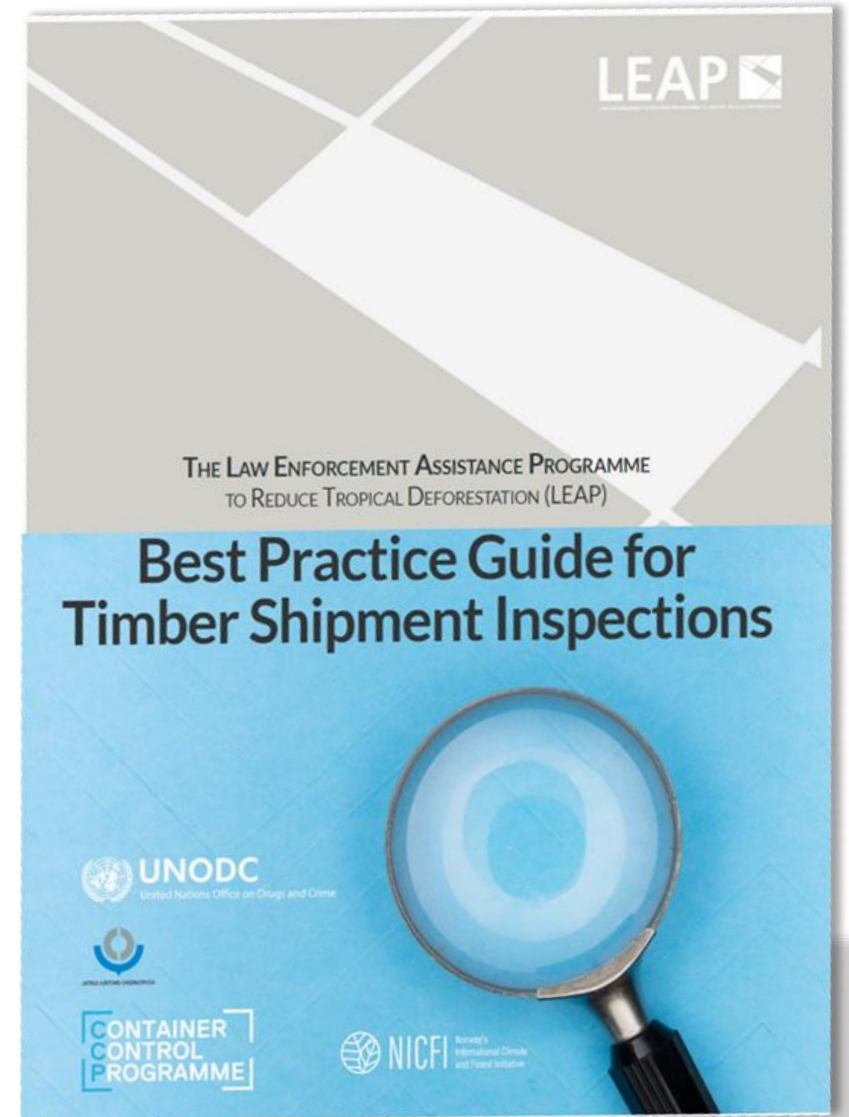
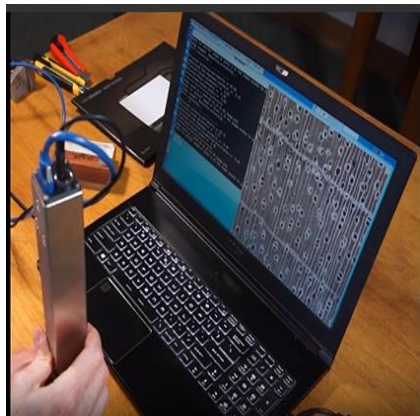
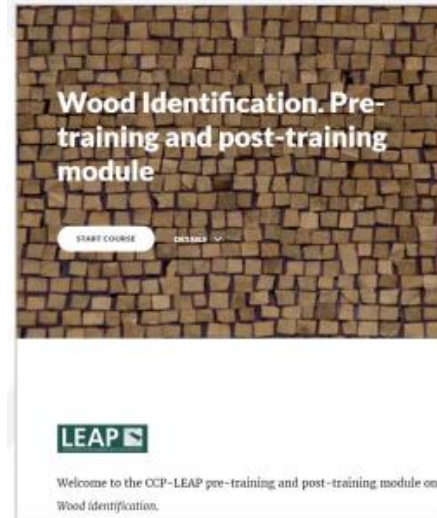
ALIGNING
ACTIVITIES



Seizures

Since 2019, PCCP has estimated that approximately 3,300 m³—or 2,800 tons—of timber have been seized.







United Nations
Office on Drugs and Crime



CONTACT US

Dr. Topan Renyaan
topan.caesar@un.org

Crime Prevention and Criminal Justice Officer
Passenger and Cargo Control Programme
Border Management Branch
United Nations Office On Drugs And Crime