



**Asia-Pacific
Economic Cooperation**

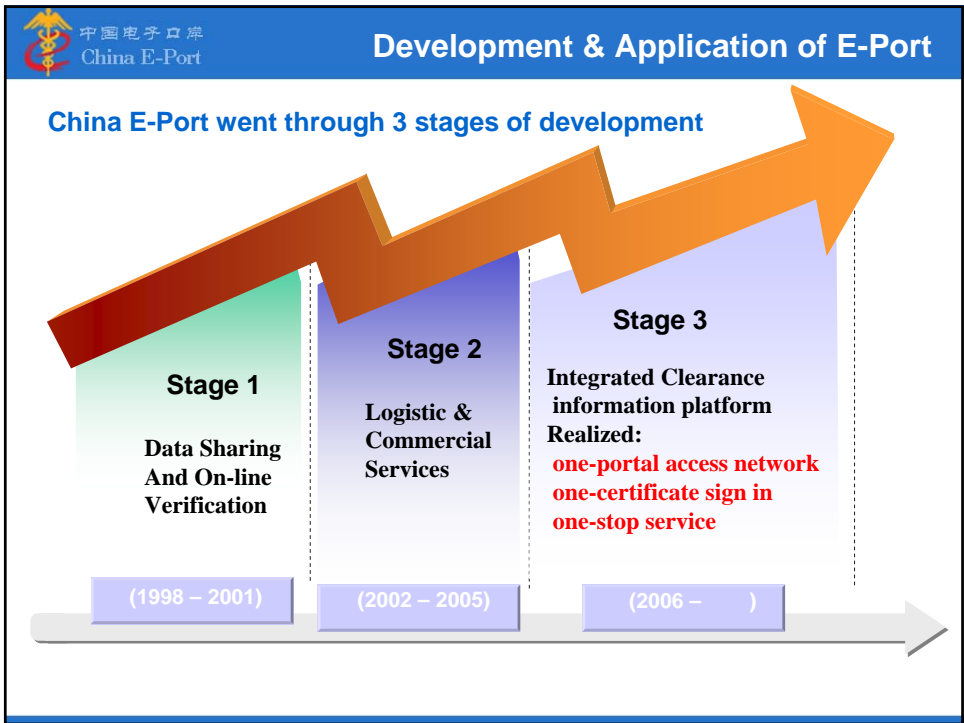
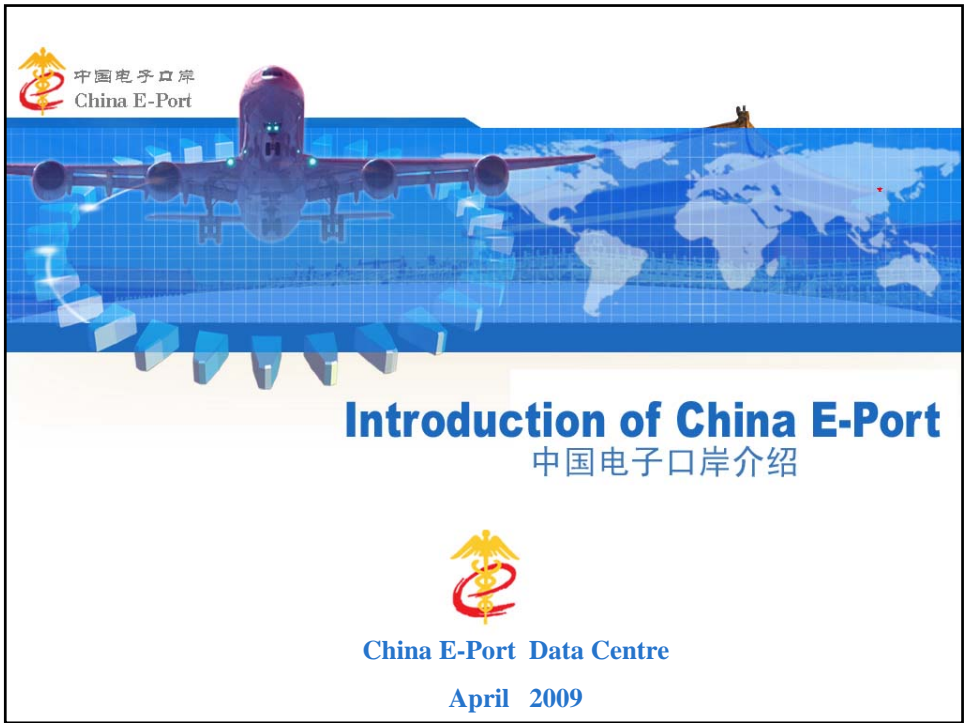
2009/SCCP/SWWG/WKSP4/010

Introduction of China e-Port

Submitted by: China

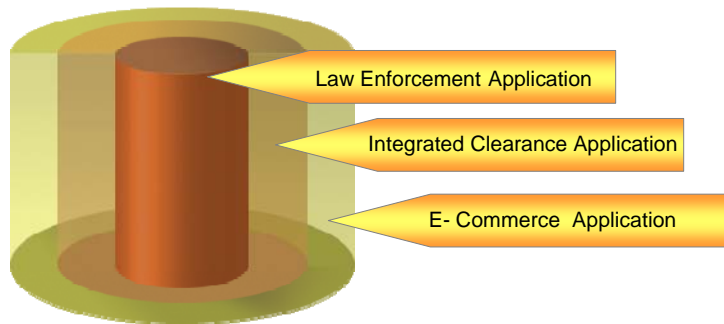


**Single Window Working Group Capacity
Building Workshop 4
Singapore
6-8 April 2009**



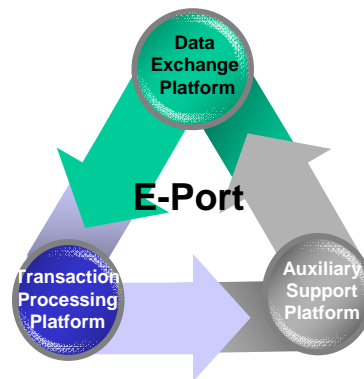
China E-Port is a **Integrated Clearance** information platform which focuses on clearance management and enforcement, extending gradually to logistics and commerce services as well.

Main Operation of China E-Port

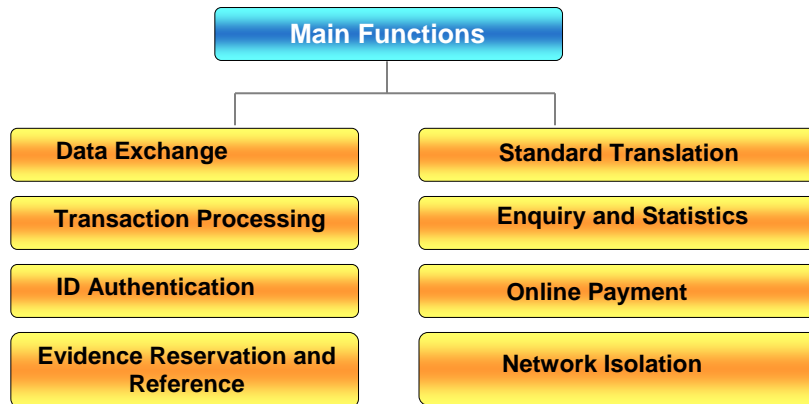


China E-Port comprises three components

Data Exchange Platform	Data exchange and sharing between government department, port management agencies , enterprises and overseas
Transaction Processing Platform	Provide : on-line declaration, on-line payment of duty to enterprises through a Single Window
Auxiliary Support Platform	Provide : enquiry and statistics for agencies ,enterprises, and technical support for the daily operation and maintenance



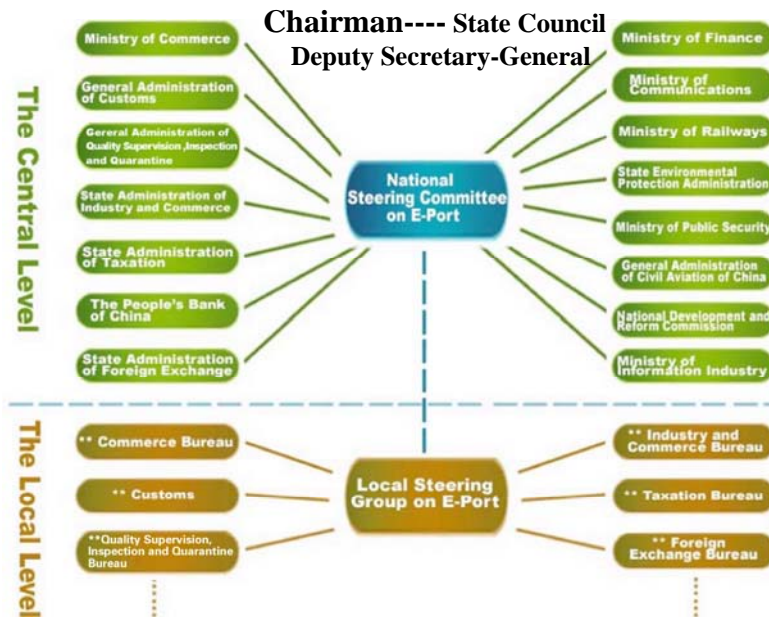
UNI-CERTIFICATION UNI-STANDARD UNI-BRAND



- The Intranets of Ministries and the local E-Ports interconnect with each other via China E-Port to realize data exchanging and sharing.



Organizational Structure Of E-Port

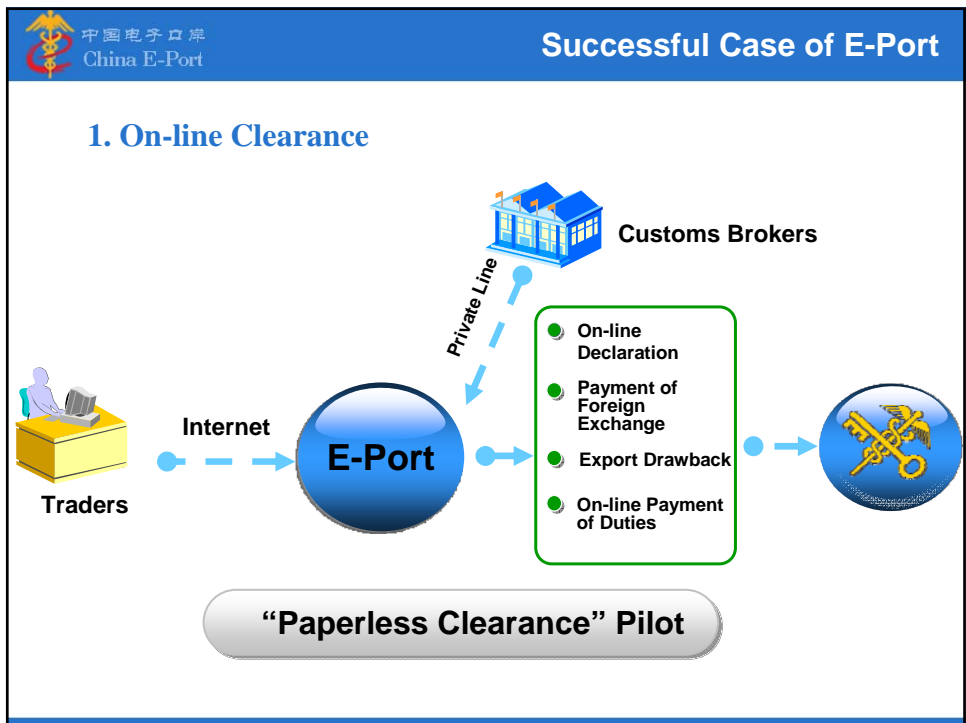
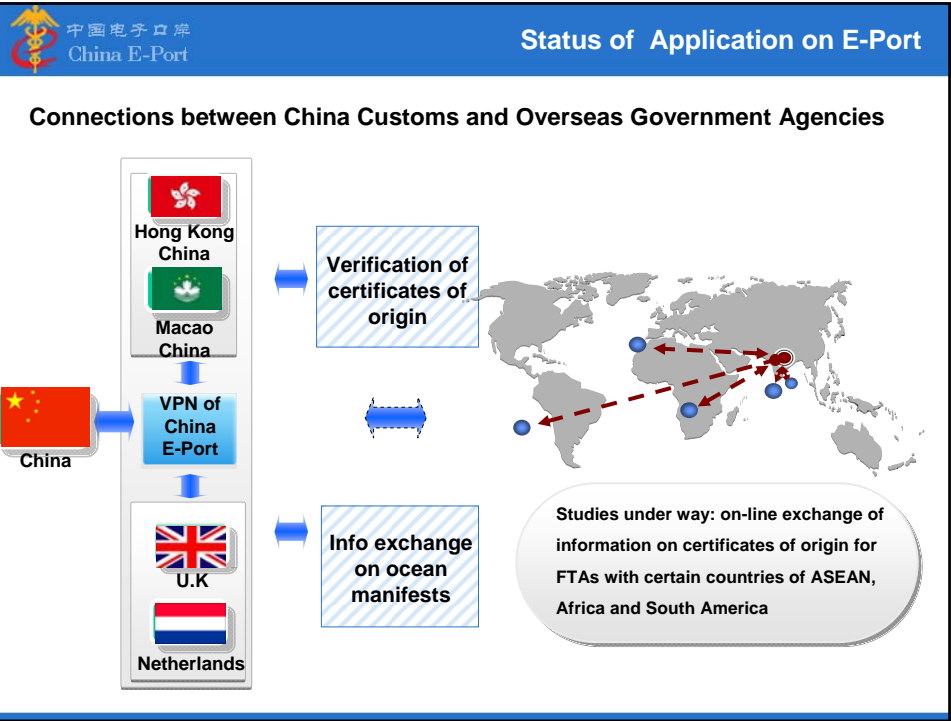


Status of Application on E-Port

China E-Port



- ➔ **35** local E-Port platforms
343.5 billion yuan paid on-line in 2008
- ➔ Networking with **11** administrations and ministries
- ➔ **13** banks and **472** thousand enterprises connected
- ➔ **4.8 million** Daily Clicks
- ➔ **1.12 million** documents & certificates processed daily
- ➔ **53** Networking application projects promoted



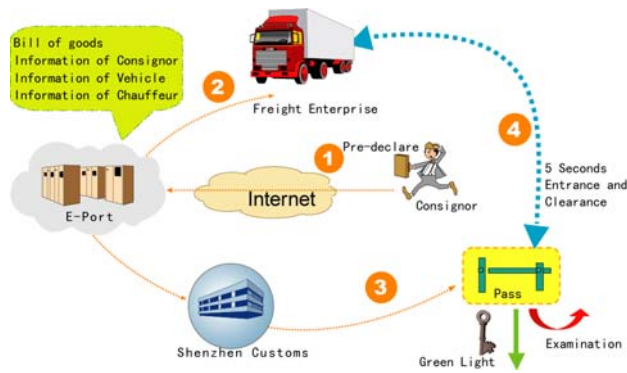
2. Fast Clearance System for Road Ports

Huanggang Road Port

30,000 Vehicles Per Day

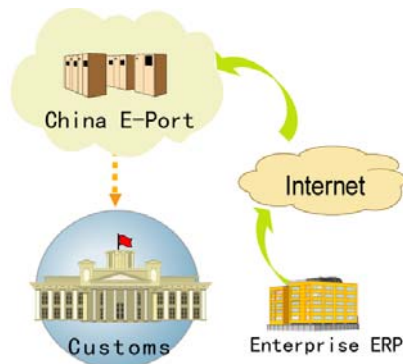
Before: 3-4 minutes

After: 5 seconds



3. E-Ledger System

The system realizes “e-ledger” management to the processing trade enterprises, which not only strengthens the Customs supervision but also improves the efficiency of Customs Clearance. There are 4552 enterprises using “e-ledger” system.



Export of Inventec Co., Ltd in Shanghai

Unit: 100millionUS.Dollars

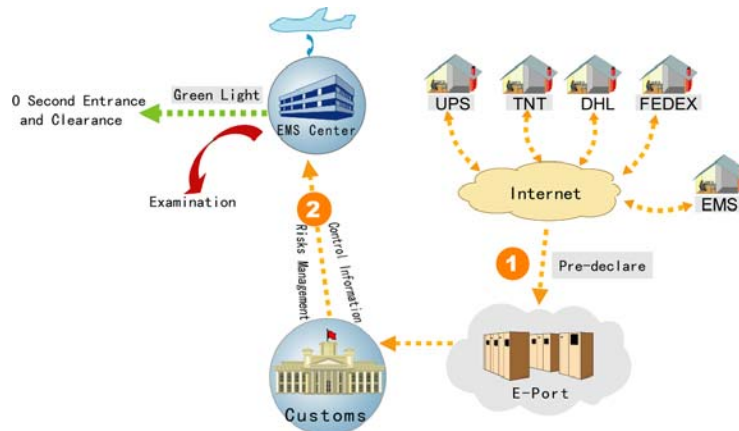


4. Express Consignment Clearance System

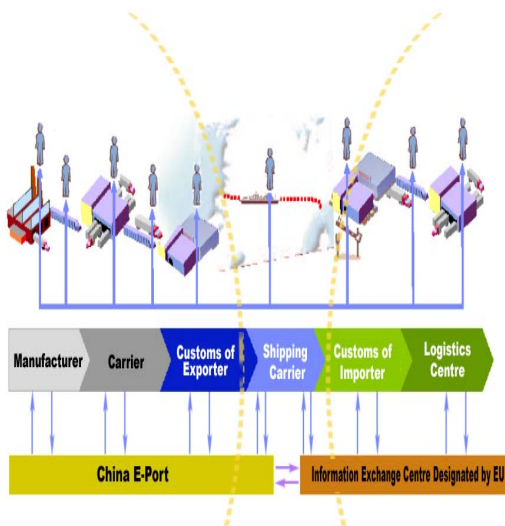
224 import Express enterprises

171 export Express enterprises

To realize the instant clearance when the parcels arrive the port



5. China-EC pilot on Smart and Secure Trade Lanes (SSTL)



On November 19, 2007, China and EC formally announced the implementation of SSTL, which was regarded as the 1st inter-continental pilot project for implementing the Framework of Standards to Secure and Facilitate Global Trade.

For the first stage, there are 3 participating ports in the pilot: Shenzhen from China, Rotterdam from the Netherlands and Felixstowe from the United Kingdom.

We are looking forward to cooperating closely with the government and business all around the world to make greater contribution to promote the security and facilitation of global trade.

Thanks !

Tel: (8610) 85193690

Fax: (8610) 85193718

E-mail: lichengli@chinaport.gov.cn